

NEW PAVILION

The new pavilion building has been designed to carefully sit into the hillside below street level, ensuring uninterrupted coastal views along the upper Cliff Road. Inspired by its context - the meeting of the soft edge of the sand dunes with the hard limestone edge - the building creates a clear threshold as both an entrance - to the beach and to the new seaside linear park - and a destination along the Wild Atlantic Way.

The pavilion is organised on three levels interconnected by a continuous gentle ramp, a stairway and lift. Arriving from the street, the gently sloping roof terrace offers flexible external space to circulate and gather along with opportunities for outdoor performances.

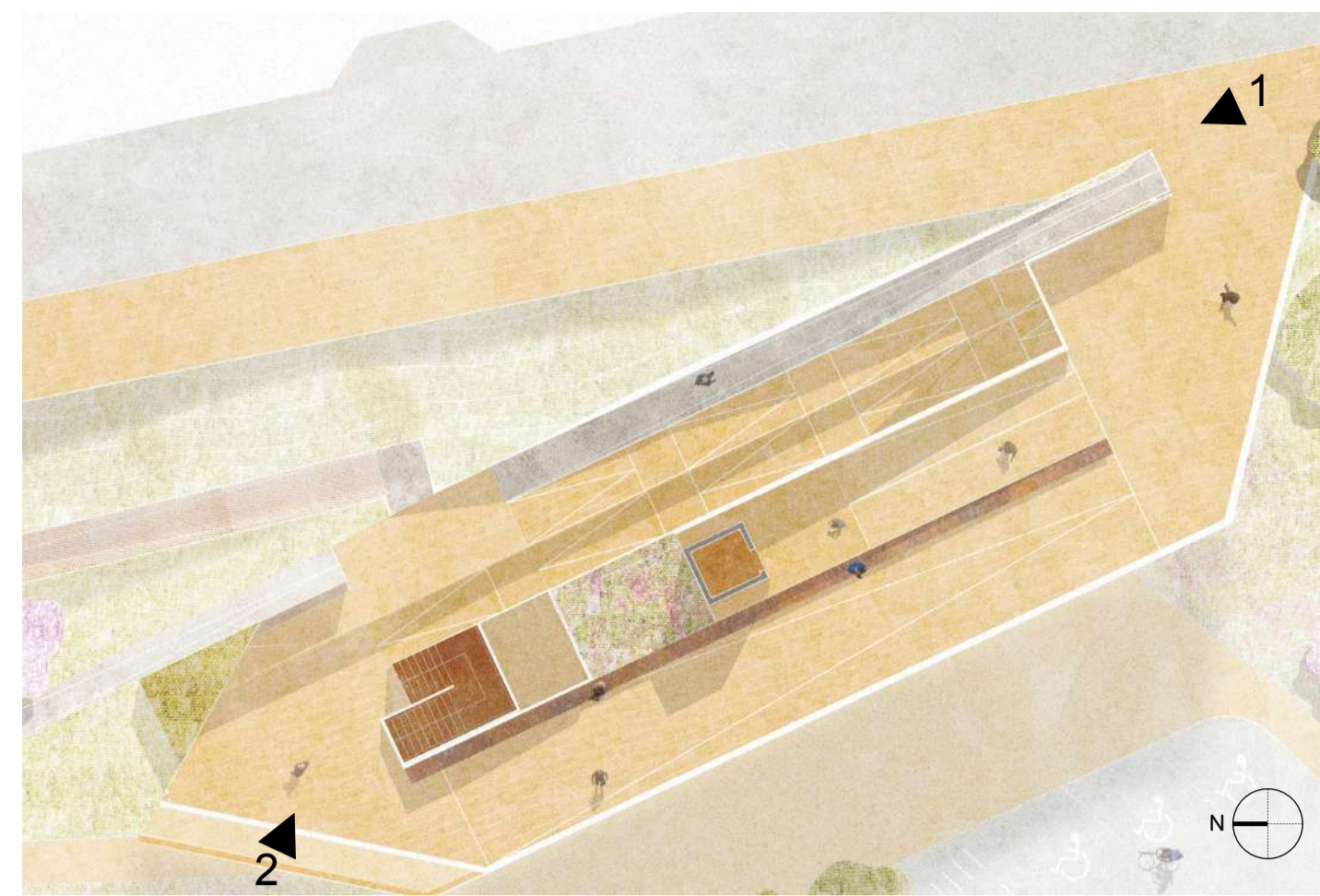
The route continues on down to the mid-level café with its covered outdoor wrap-around gallery enjoying expansive views of Enniscrone's remarkable beach and across Killala Bay to the north Mayo coastline.



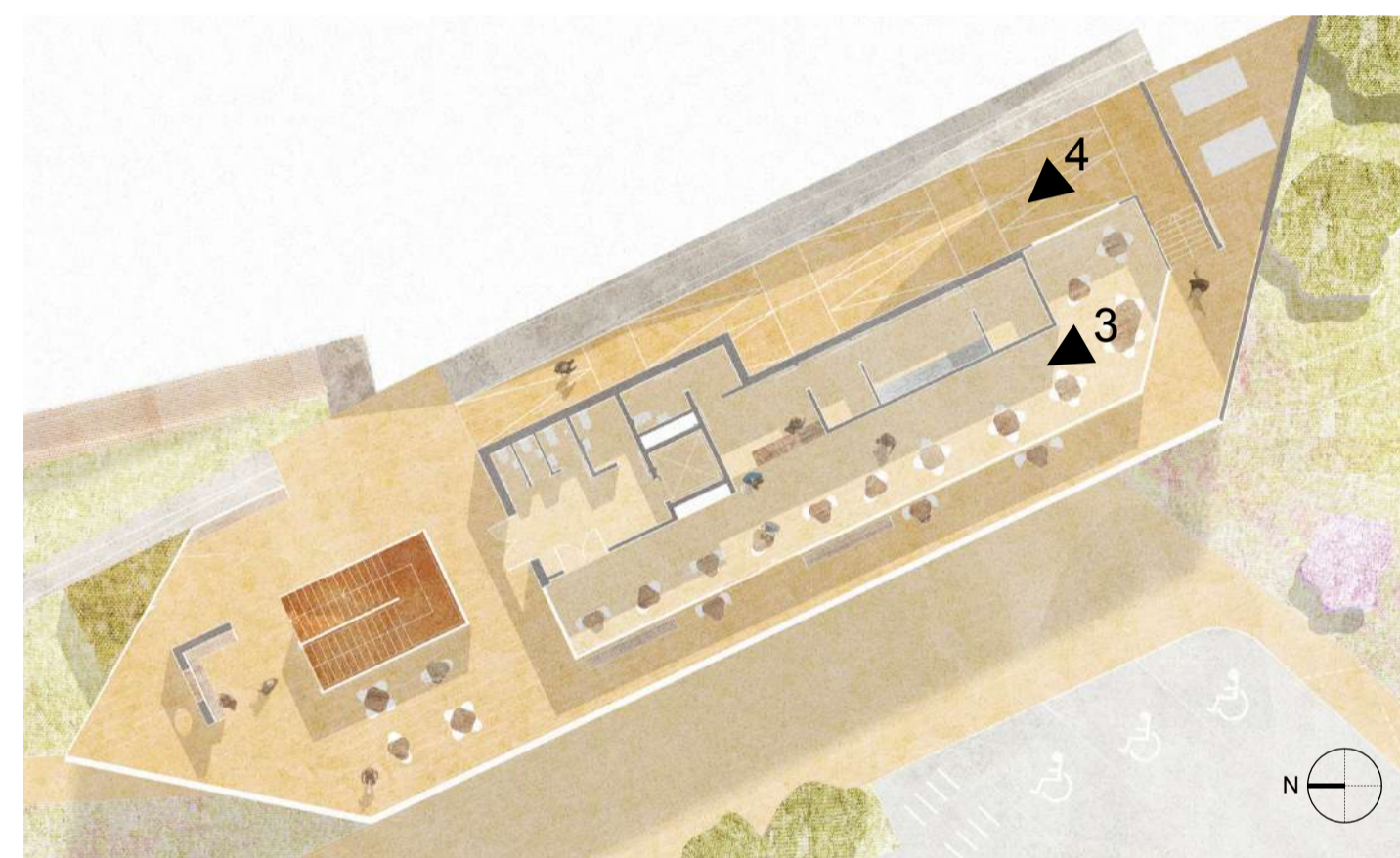
STREET ENTRANCE TO PAVILION - view 1



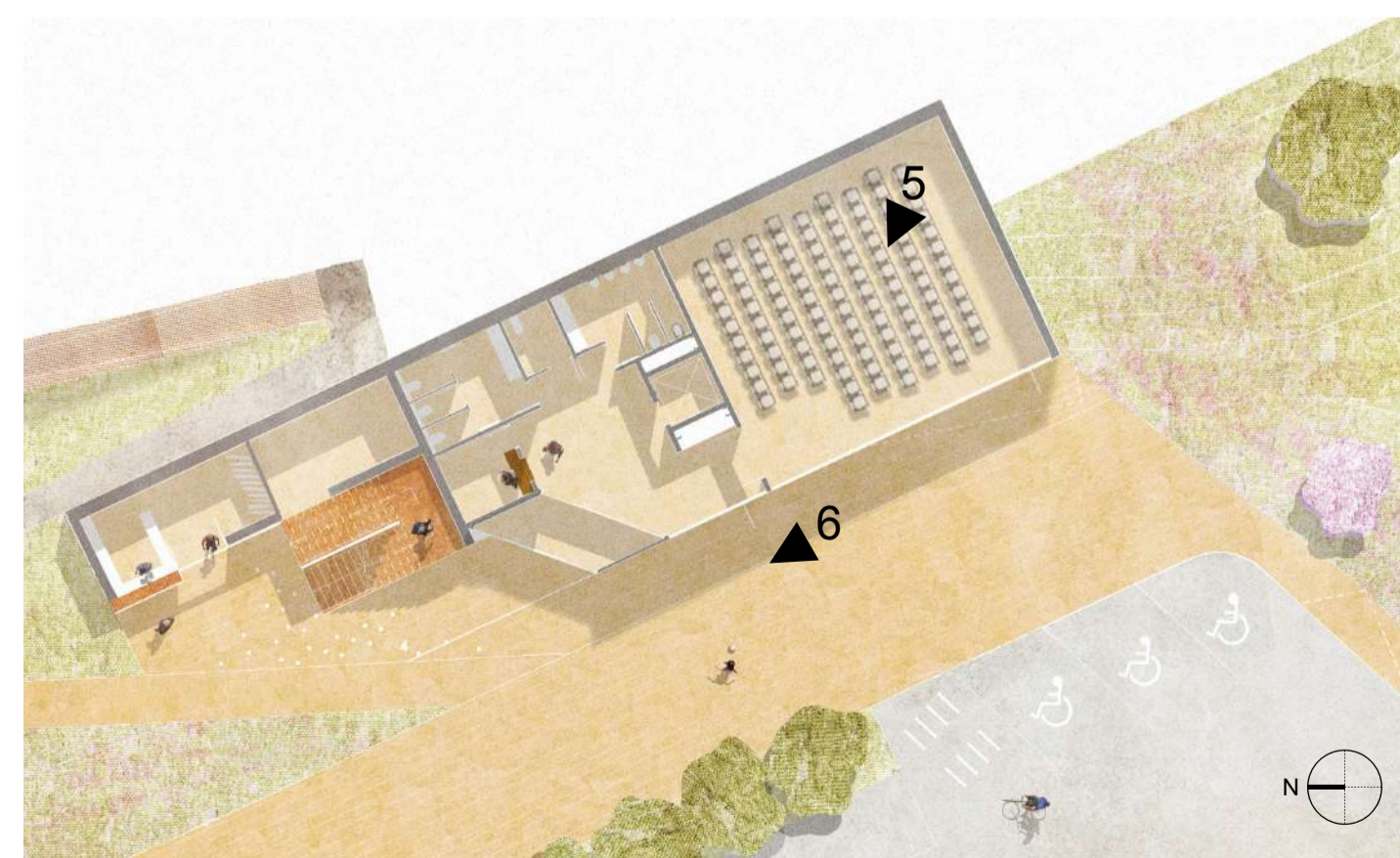
PAVILION VIEW FROM BEACH - view 2



PAVILION-STREET LEVEL



PAVILION-CAFE LEVEL



PAVILION-BEACH LEVEL

Constructed from a Douglas Fir timber frame, the café space contrasts with the mass of the concrete and has a homely and inviting feel.

Adjacent to the pavilion, the original diagonal route from the street to the beach continues on down to the flexible community space and public information kiosk at the car park level offering views out and connection to the beach and sea. The covered external entrance space allows a place for people to meet and move up through the building. The flexible community space features fair-faced concrete walls with fully glazed walls to the southwest.

The building will be constructed from layered, pigmented concrete using local aggregates and sand evoking the strata of the wider site's local sandstone. The existing concrete walls already present along the cliff walk have been 'tried and tested' to prove its resilience.

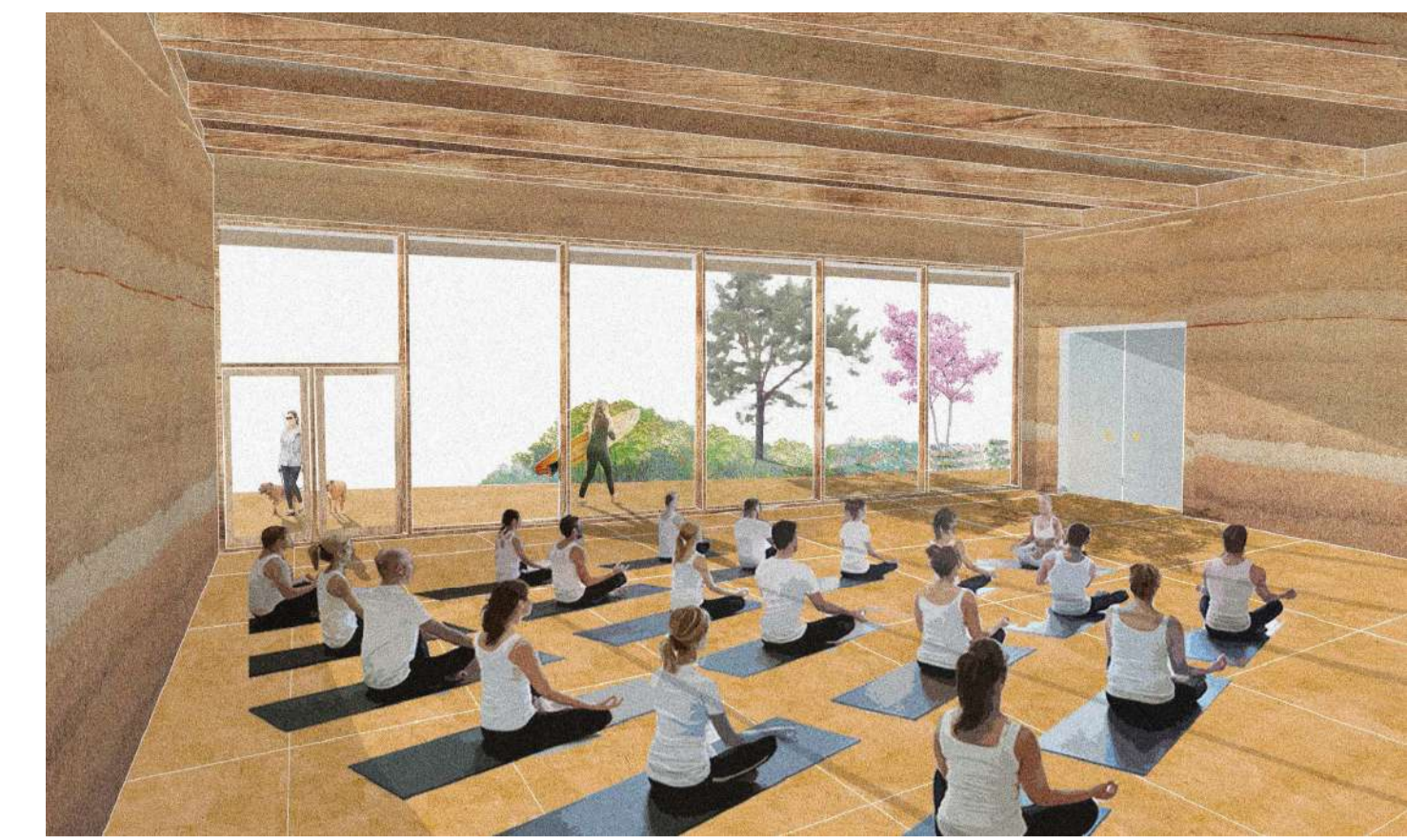
The intention of the design is to create a building with long-term resilience and sustainability. Design decisions were driven by a commitment to climatic responsive design and low carbon strategies.



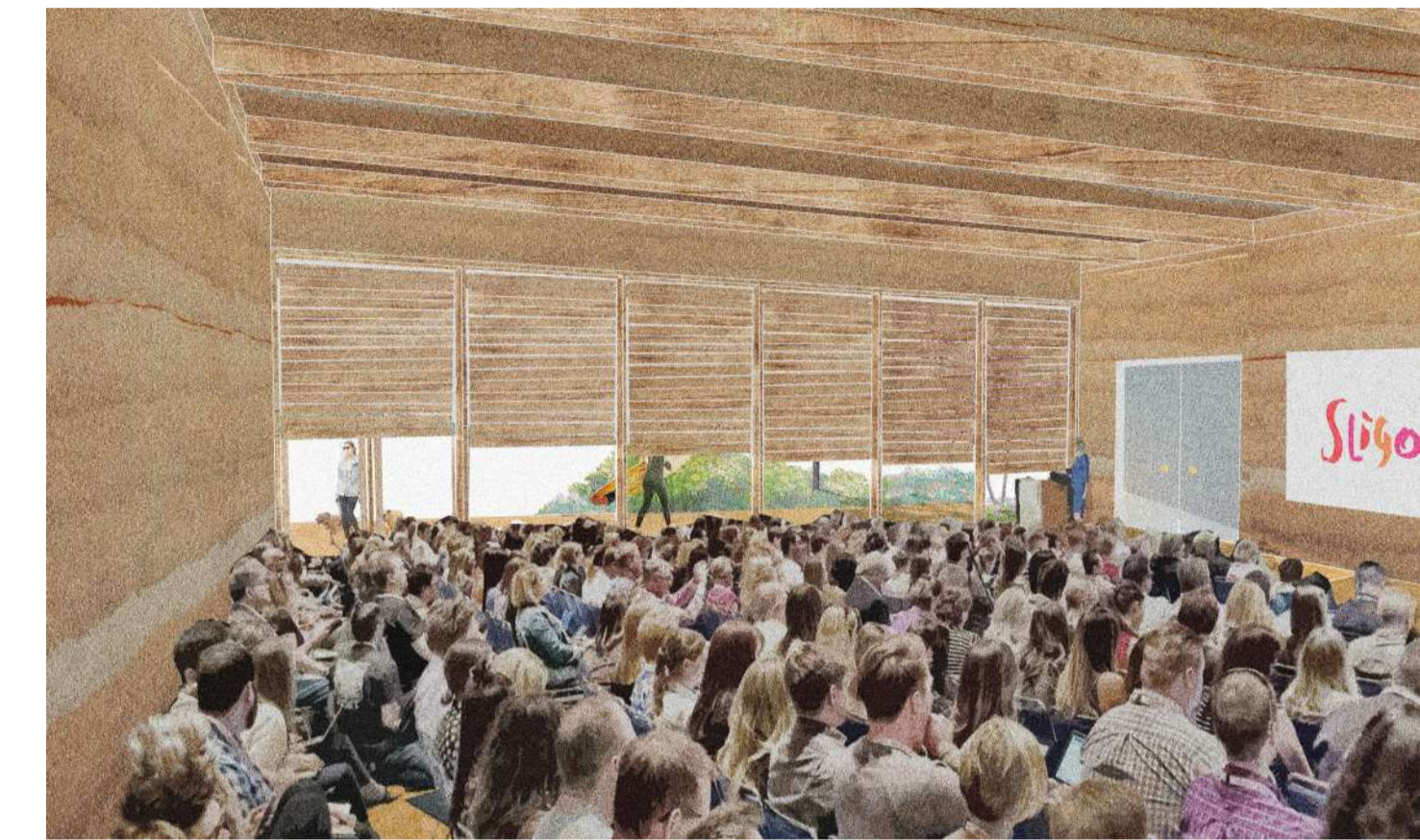
PAVILION AT CAFE-LEVEL - view 3



PAVILION AT MID-LEVEL - view 4



COMMUNITY SPACE (YOGA) - view 5

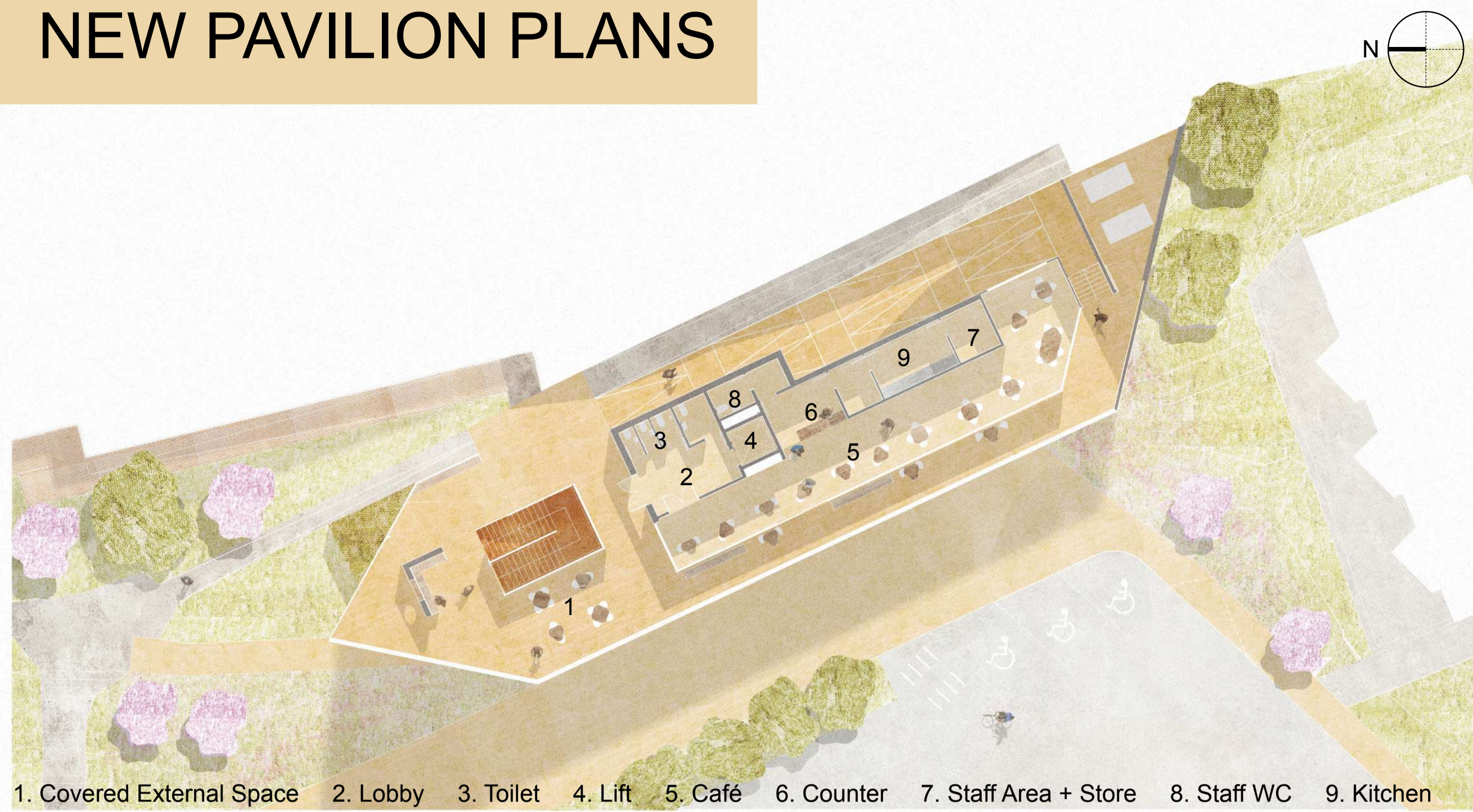


COMMUNITY SPACE (PUBLIC TALK) - view 5



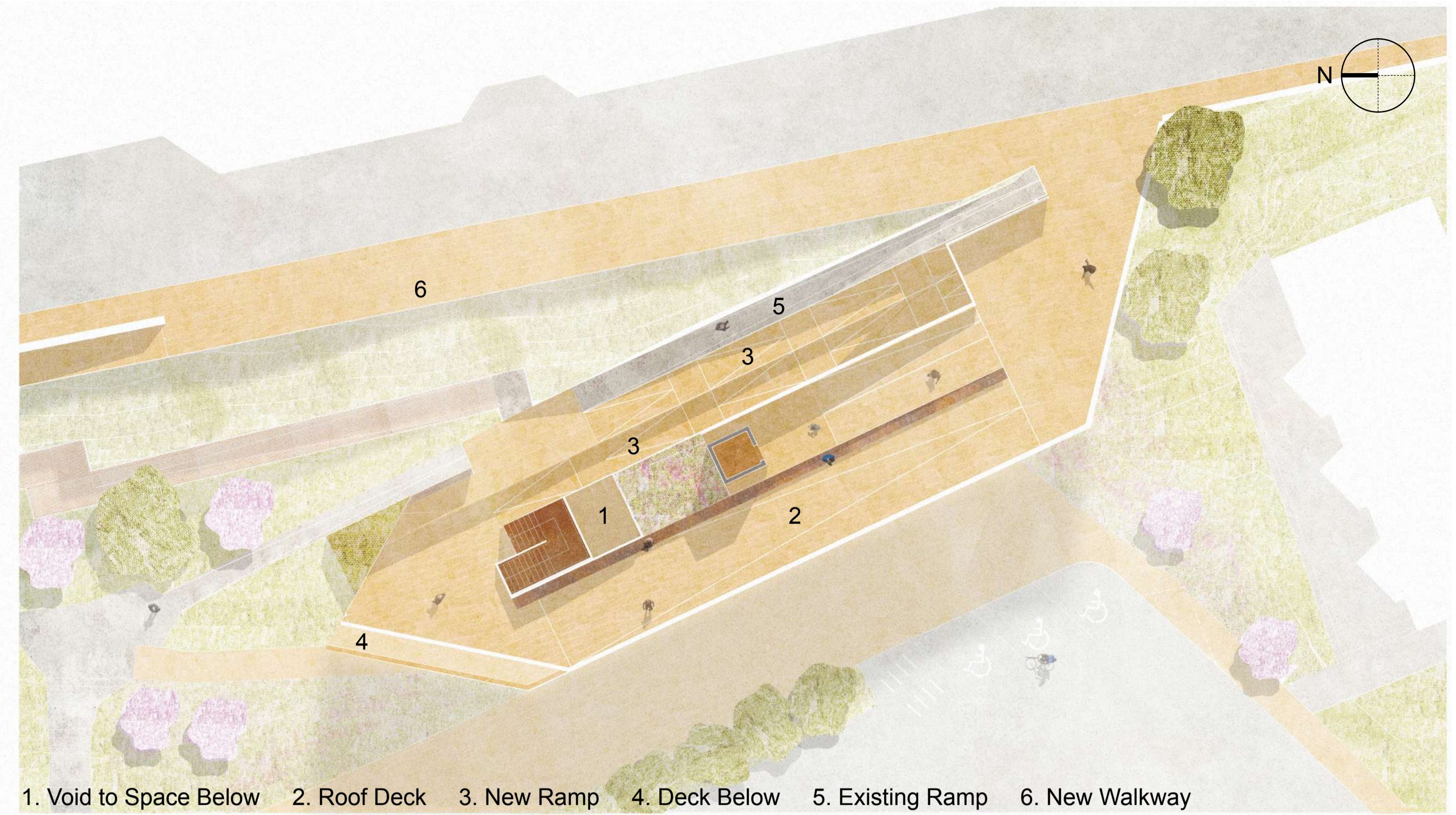
PAVILION AT BEACH LEVEL - view 6

NEW PAVILION PLANS



1. Covered External Space 2. Lobby 3. Toilet 4. Lift 5. Café 6. Counter 7. Staff Area + Store 8. Staff WC 9. Kitchen

PAVILION CAFE- FIRST FLOOR PLAN



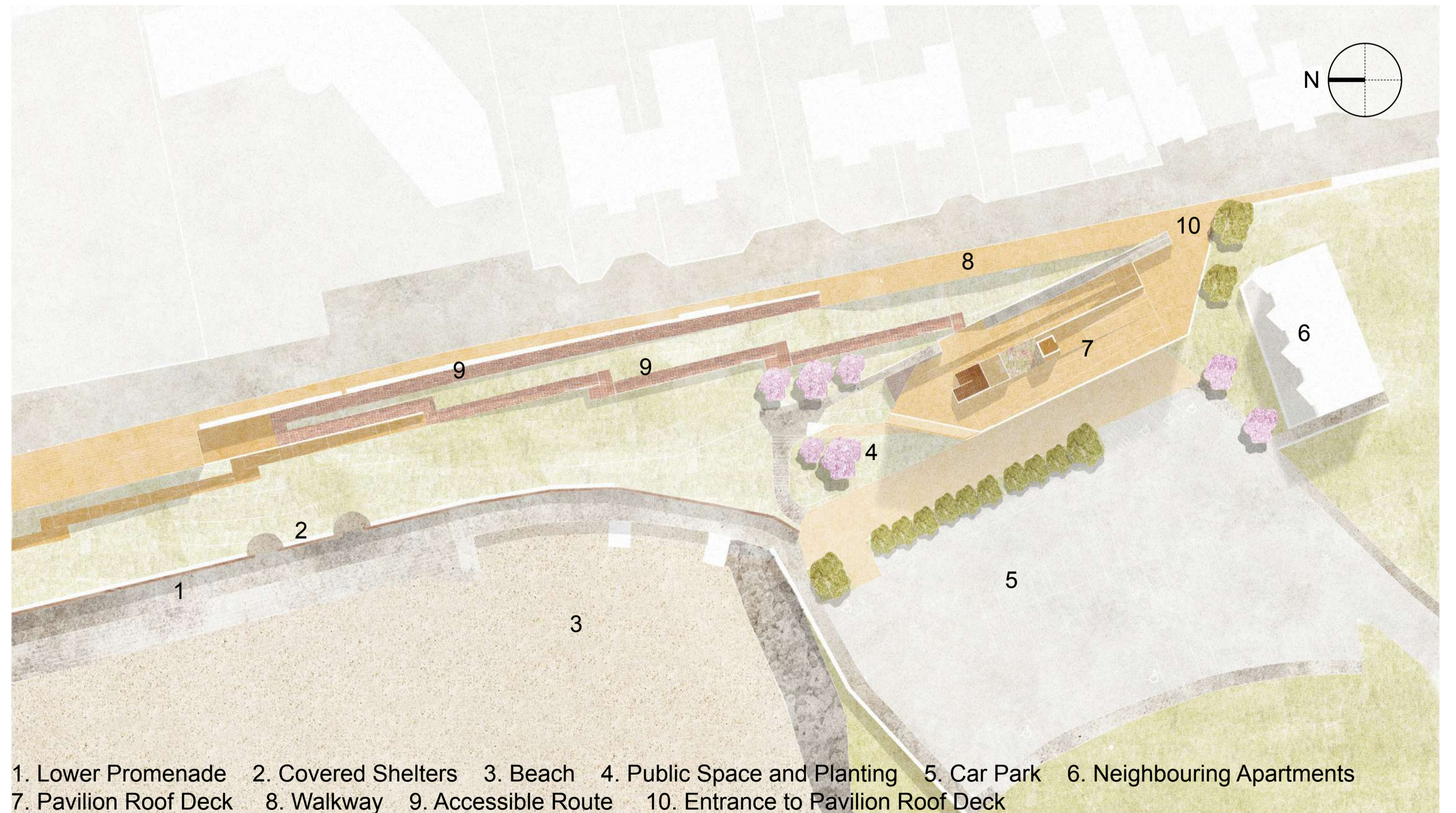
1. Void to Space Below 2. Roof Deck 3. New Ramp 4. Deck Below 5. Existing Ramp 6. New Walkway

PAVILION ROOF DECK- STREET LEVEL PLAN



1. Information Kiosk 2. Store 3. Toilets 4. Reception 5. Foyer 6. Lift 7. Community Space

PAVILION COMMUNITY CENTRE - CAR PARK LEVEL PLAN



1. Lower Promenade 2. Covered Shelters 3. Beach 4. Public Space and Planting 5. Car Park 6. Neighbouring Apartments
7. Pavilion Roof Deck 8. Walkway 9. Accessible Route 10. Entrance to Pavilion Roof Deck

PAVILION SITE PLAN - ZONE 1