

PUBLIC REALM

PROJECT TEAM

CLIENT	SLIGO COUNTY COUNCIL ENNISCRONE DISTRICT AND COMMUNITY COUNCIL
ARCHITECTS	NOJI ARCHITECTS DORMAN ARCHITECTS
SERVICES ENGINEER	METEC CONSULTING ENGINEERS
QUANTITY SURVEYORS	KILFEATHER CHARTERED QUANTITY SURVEYORS
CIVIL AND STRUCTURAL	CASEY O'ROURKE
TOURISM CONSULTANT	MEEHAN TULLY AND ASSOCIATES
ENVIRONMENTAL CONSULTANT	AONA ENVIRONMENTAL CONSULTING
BAT SURVEYOR	BARBARA MCINERNEY
CONSERVATION ARCHITECT	FIVE-SEVEN ARCHITECTS
LANDSCAPE	FAOIN AER
ARCHAEOLOGIST	ATLANTIC ARCHAEOLOGY
SURVEYING	PRECISION UTILITY MAPPING



CLIFF BATH HOUSE AND PUBLIC TOILETS



UPPER PROMENADE-HEDGED SHELTER - view 2



OUTDOOR PERFORMANCE SPACE - view 3



CLIFF BATH HOUSE AND SHELTER - view 4



CLIFF BATH HOUSE AND PUBLIC TOILETS - view 1

PUBLIC REALM

The new public realm design provides multiple accessible routes, new connections, sheltered spaces, view points, play spaces, gathering places to rest and enjoy the unfolding marine landscape.

The narrow footpath on Cliff Road is widened into a boardwalk leading to a large central viewing area. An accessible walkway leads from it down to a new covered colonnade and on to the pavilion cafe. The colonnade provides a place for casual markets, temporary exhibitions and encounters amongst the community and visitors.

A new route to the old seaweed baths is created by the diagonal walkway connecting the upper and lower promenades.

Along the lower promenade a series of new half domed shelters provide places to enjoy the views over the beach. Glazed tiles, lining both the shelters and the promenade walls, introduce a band of colour inspired by the rich palette of materials found at the old bath house. Long continuous benches meander through the site providing further places to rest.

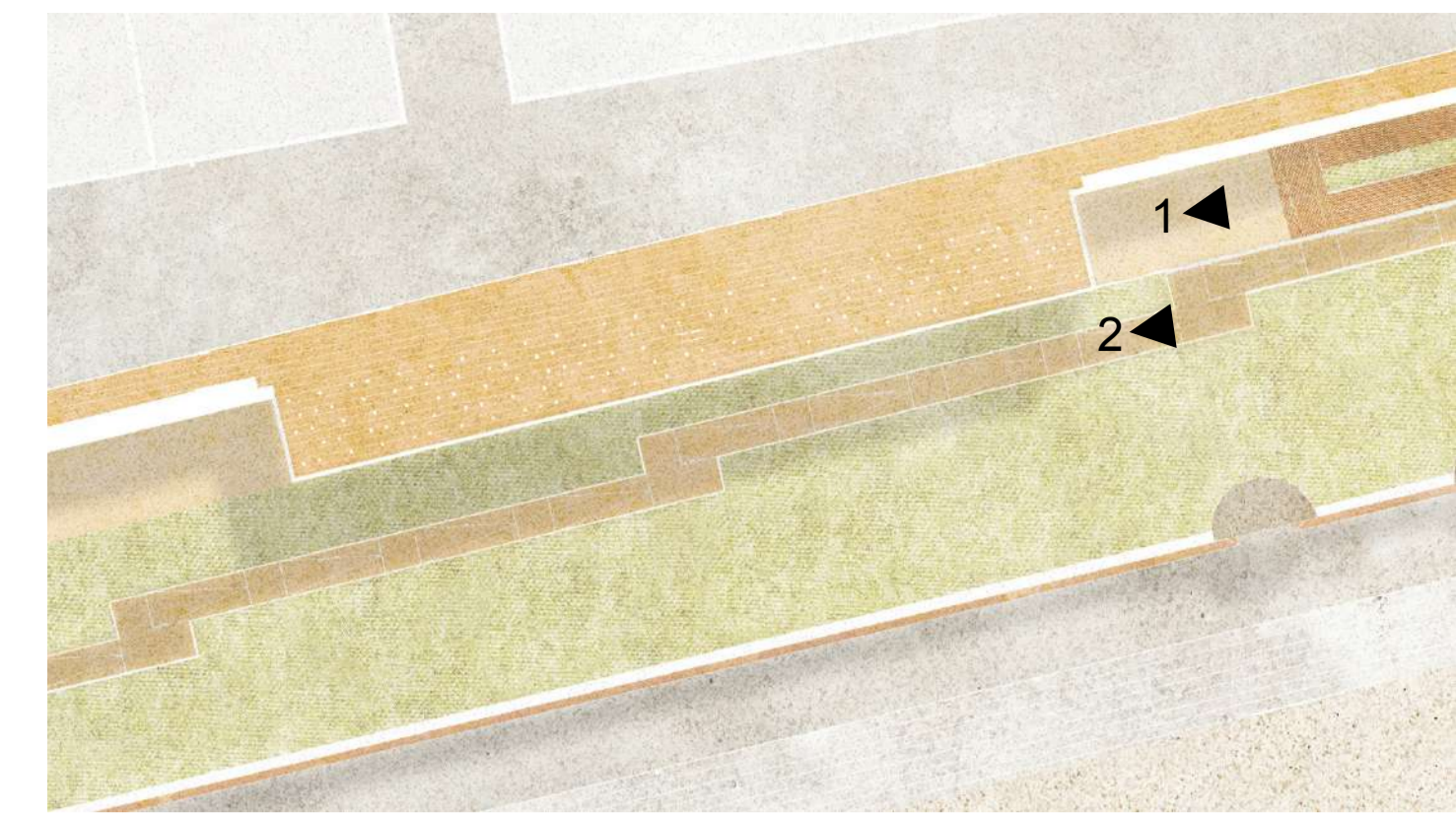
A stepped outdoor performance space overlooks old Cliff Bathhouse with wellness centre toilets tucked into the hillside beneath.

CLIFF BATH HOUSE

A seaside sauna and therapy centre is proposed as an appropriate use for the historic building to ensure the heritage of the cliff baths is protected into the future and will add to and enhance the already existing seaweed baths nearby.

The proposal is to carry out the minimum intervention to the historic structure by occupying the rooms with dry saunas, therapy and relaxation rooms which can operate without the need for major intervention.

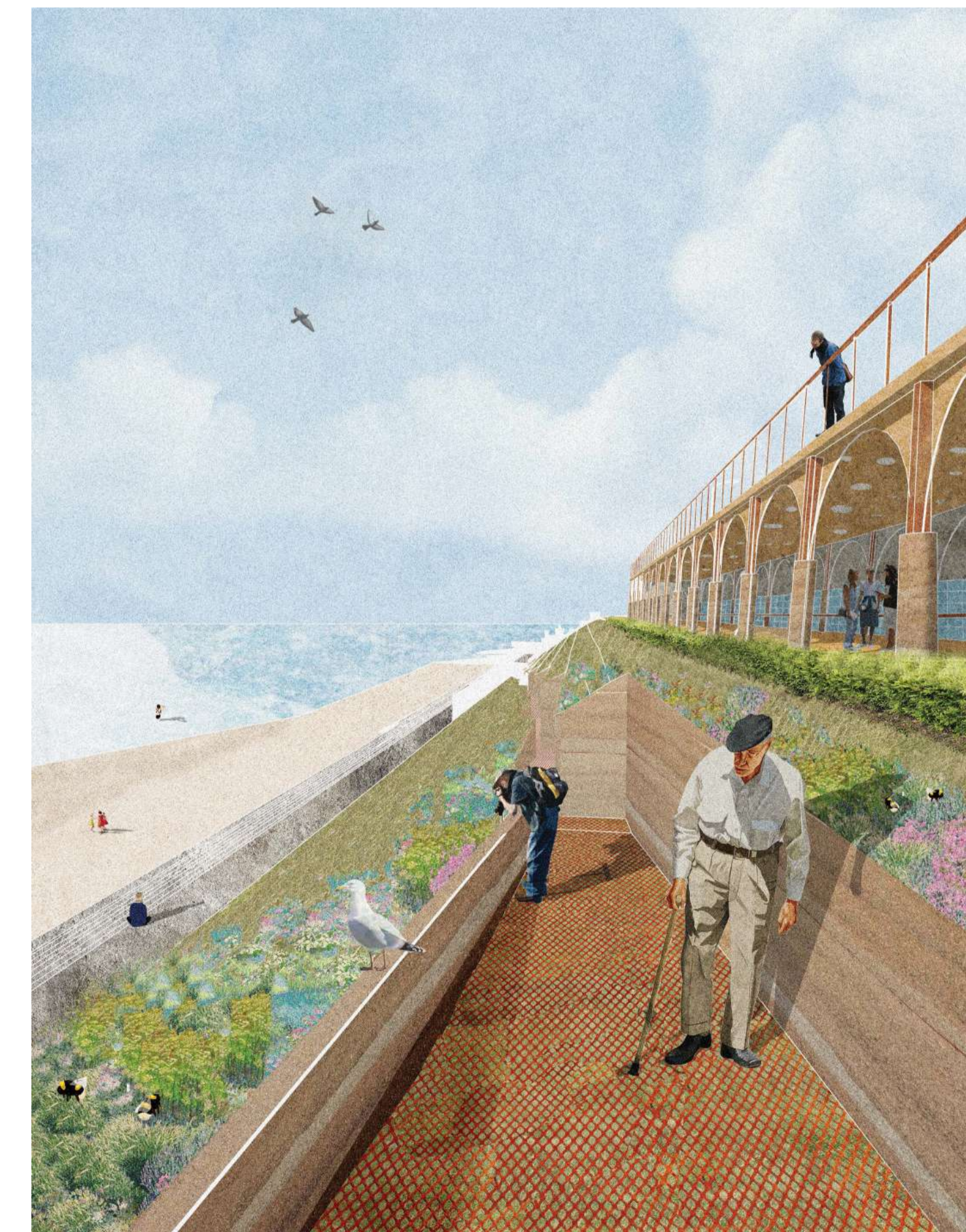
One of the 19th century arched ceiling rooms will be conserved as a visitor's museum displaying its original roll top enamel bath, shower and floor tiling. The new building's use will serve the local community as well as providing an exciting destination for people from afar.



UPPER PROMENADE

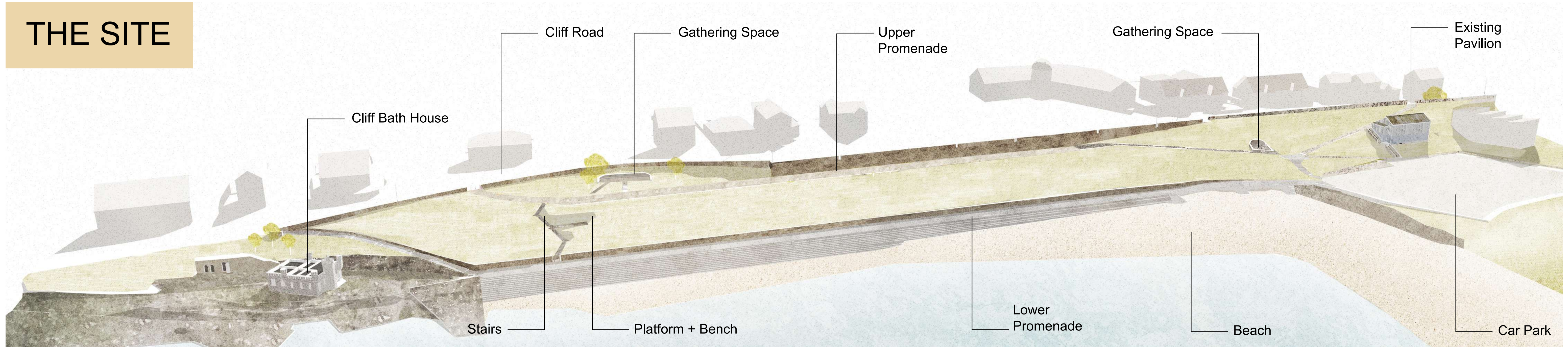


UPPER PROMENADE COLONNADE - view 1



SLOPED ACCESS WAY - view 2

THE SITE



EXISTING PLAN

ENNISCRONE CLIFF BATH HOUSE, PAVILION AND PROMENADE PROJECT



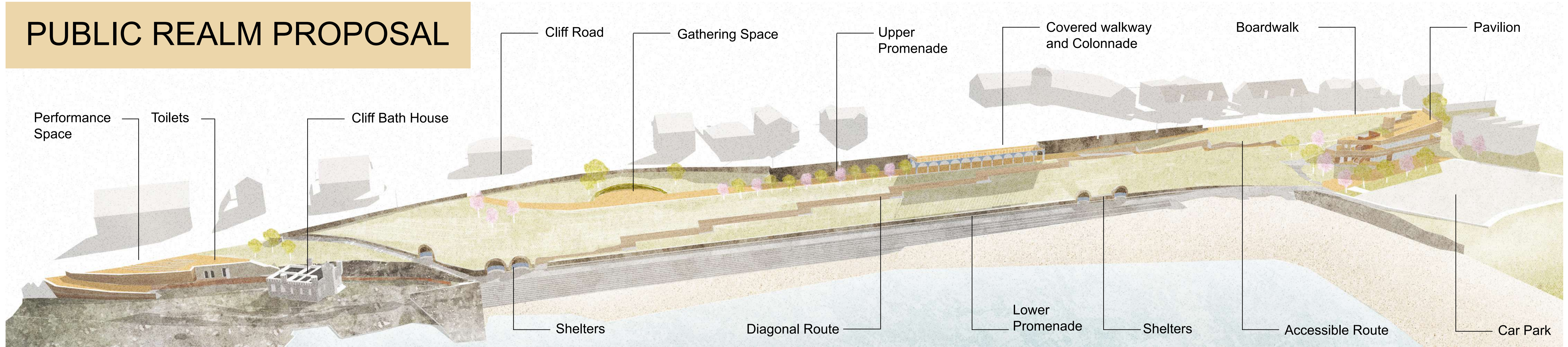
Sligo County Council
Comhairle Chontae Shligigh



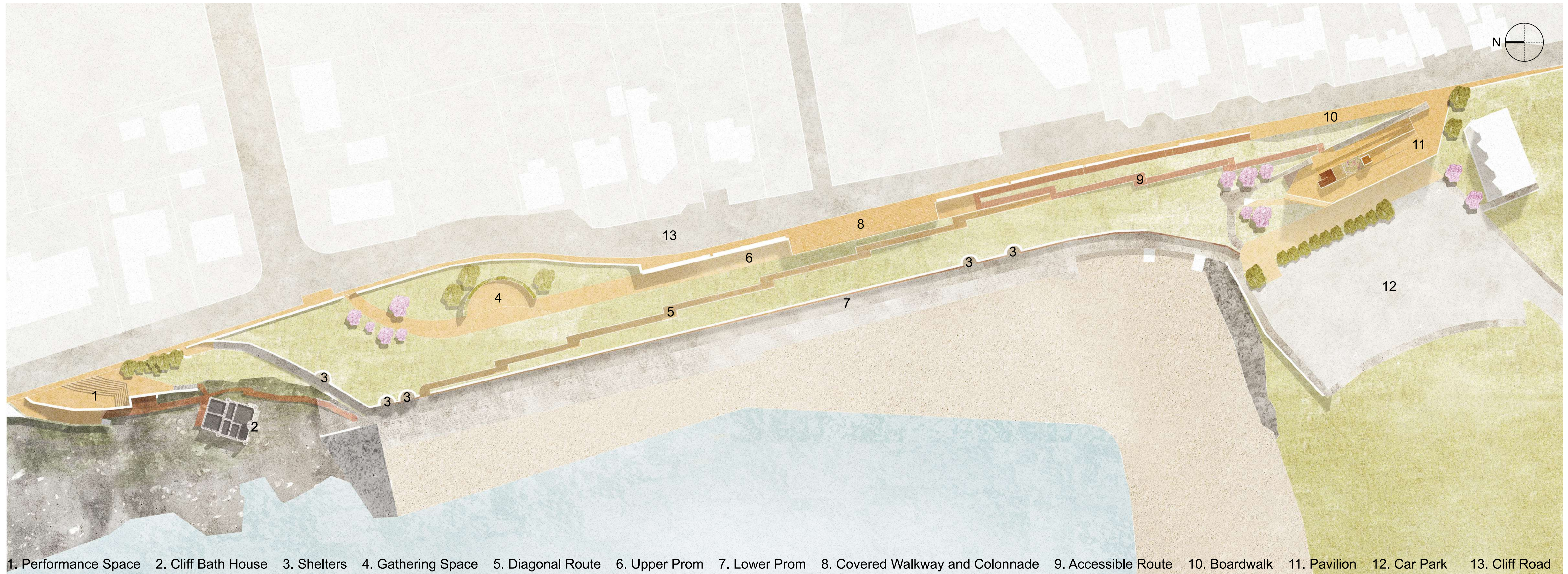
An Roinn Forbartha
Tuaithe agus Pobail
Department of Rural and
Community Development



PUBLIC REALM PROPOSAL



SITE OVERVIEW



1. Performance Space 2. Cliff Bath House 3. Shelters 4. Gathering Space 5. Diagonal Route 6. Upper Prom 7. Lower Prom 8. Covered Walkway and Colonnade 9. Accessible Route 10. Boardwalk 11. Pavilion 12. Car Park 13. Cliff Road

SITE PLAN

ENNISCRONE CLIFF BATH HOUSE, PAVILION AND PROMENADE PROJECT



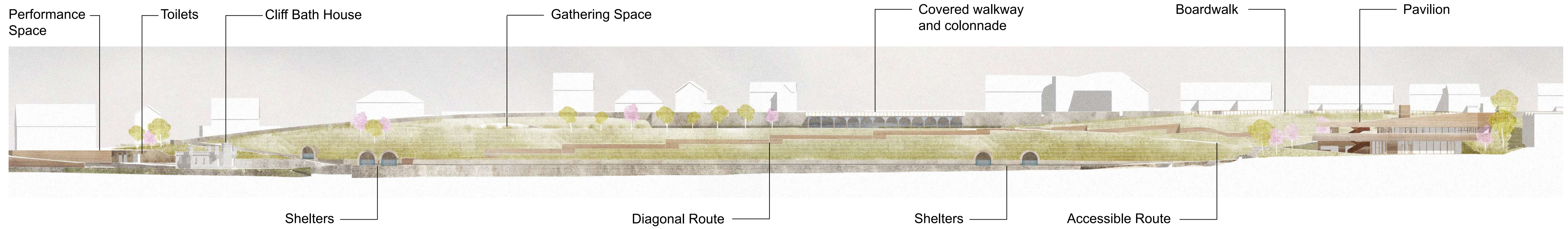
Sligo County Council
Comhairle Chontae Shligigh



An Roinn Forbartha
Tuaithe agus Pobail
Department of Rural and
Community Development



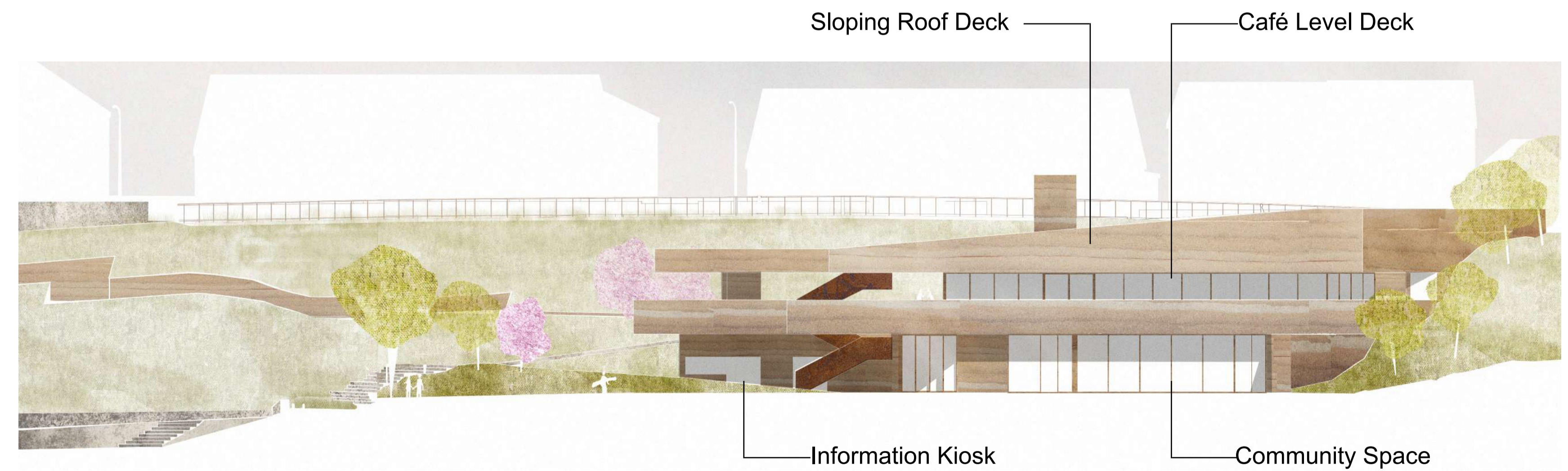
NEW PAVILION AND PUBLIC REALM



SITE SECTION



PAVILION NORTH ELEVATION



PAVILION WEST ELEVATION