

VISION + STRATEGY

Introduction

Our Vision for New Public Realm at Enniscrone

One could describe the site as Enniscrone's 'lungs', breathing life back into the centre and surrounding areas. This is where the life of the town and its community play out. Here, they walk, talk, meet, greet, swim, sup, surf, play, fish, bathe, rest, relax...

The new public realm will not only shape the way the town looks, it will have a profound impact on how and where people meet, walk, exercise, play, discover and interact with nature. It will play a key role in bringing people together, promoting social interaction and creating a healthier, more liveable town.

The new plan is underpinned by the concept of health and well-being. It aims to build on the town's reputation as a seaside and wellness destination - existing since Victorian times.

The new plan will create space for the community to develop and thrive. The design will be responsible, accessible, and focussed on creating an inclusive environment. It will be a welcoming place for visitors encouraging them to linger, relax, enjoy and discover the rich history and beauty of Enniscrone.

The proposal seeks to ensure that development of the public realm, the adaptive re-use of the Victorian Bathhouse and new Pavilion will enhance the identity and character of this unique coastal town.

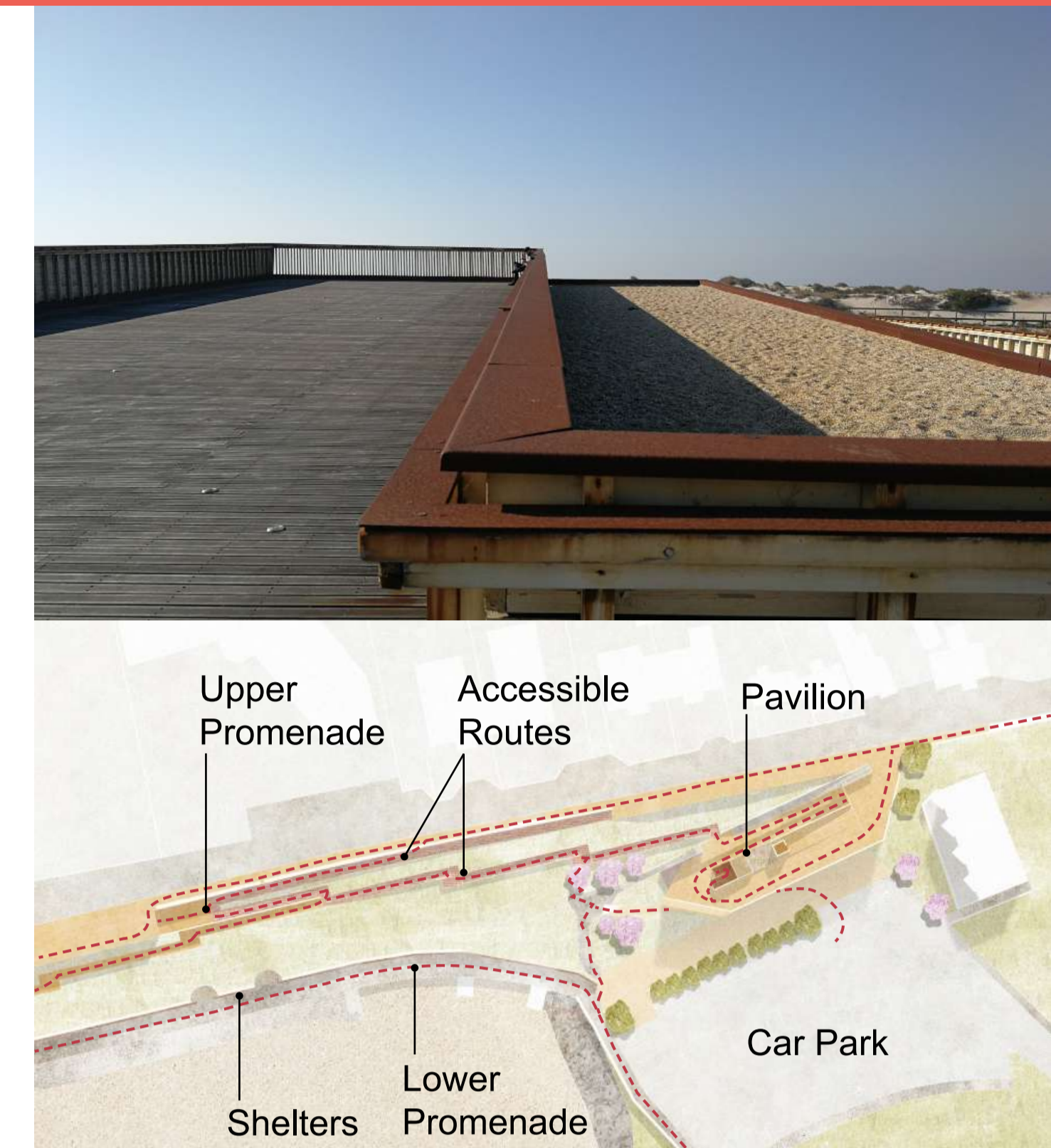
We consider this project to be a key component in Sligo County Council's endeavour to encourage people to move to Enniscrone, along with new businesses, both of which are essential for the viability of the town. By extension visitors will be drawn year round by maximising the potential that this attractive and pleasant coastal town can offer.

Access + Connectedness Community Culture Area

Community + Culture Area

New and accessible routes will provide greater connections for all users from the street level to the beach level. Accessible routes to lead down to both Upper and Lower Promenades, and to the new Pavilion.

The new Pavilion serves both as a means for circulation and as a space for community activity. A viewing deck on the upper level will be accessible from street level, leading down to the mid-level café and then down on to the promenade level community centre.



Access + Connectedness Public Realm

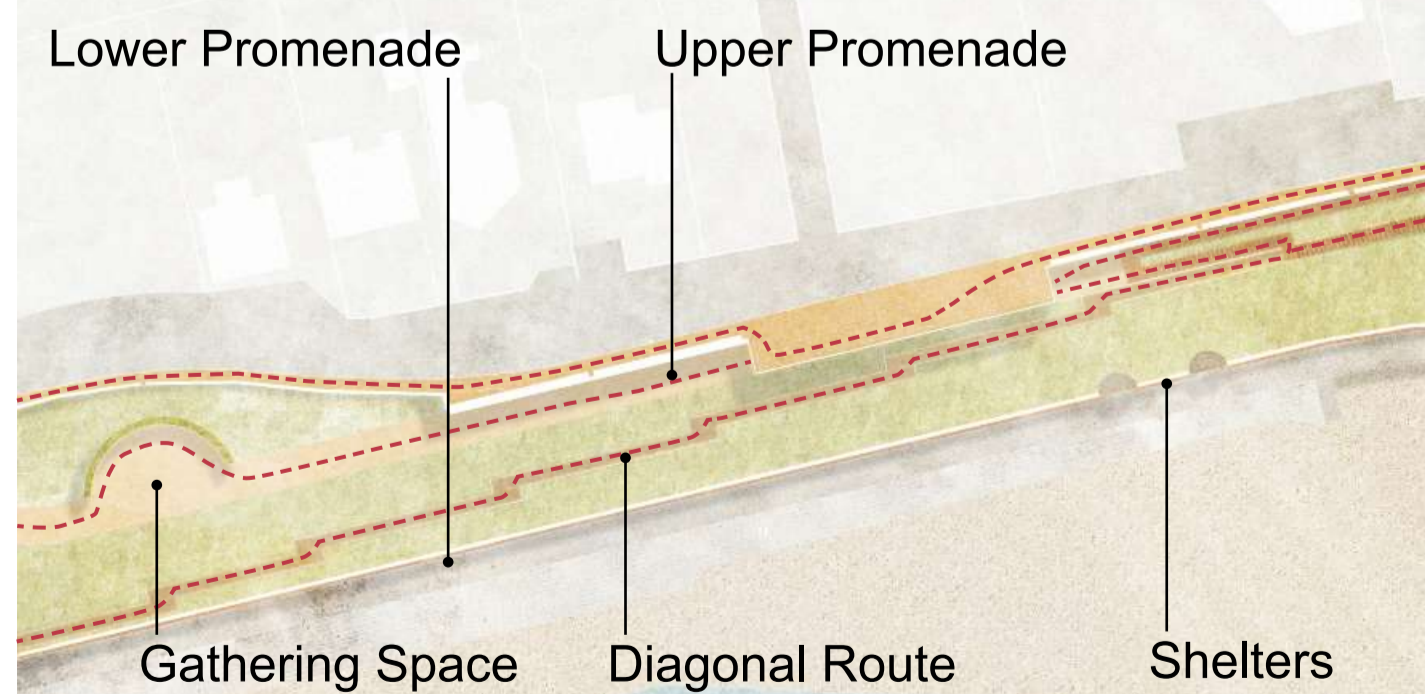
Central Promenade + Public Realm

New connections, projected viewing and information points, sheltered gathering spaces, accessible pathways and furniture will open up the promenades at all levels to the wider public realm.

The spaces incorporate play into mobility as well as mobility into play as these create natural situations that encourage independent and self-directed play.

A diagonal route from the central promenade will allow the public to gently stroll down to beach level and on to the Cliff Bath House. Another route will lead to the pavilion.

A long continuous bench serves many functions - providing space to rest and to meet, as well as knitting together each area of the public realm.



Access + Connectedness Cliff Baths

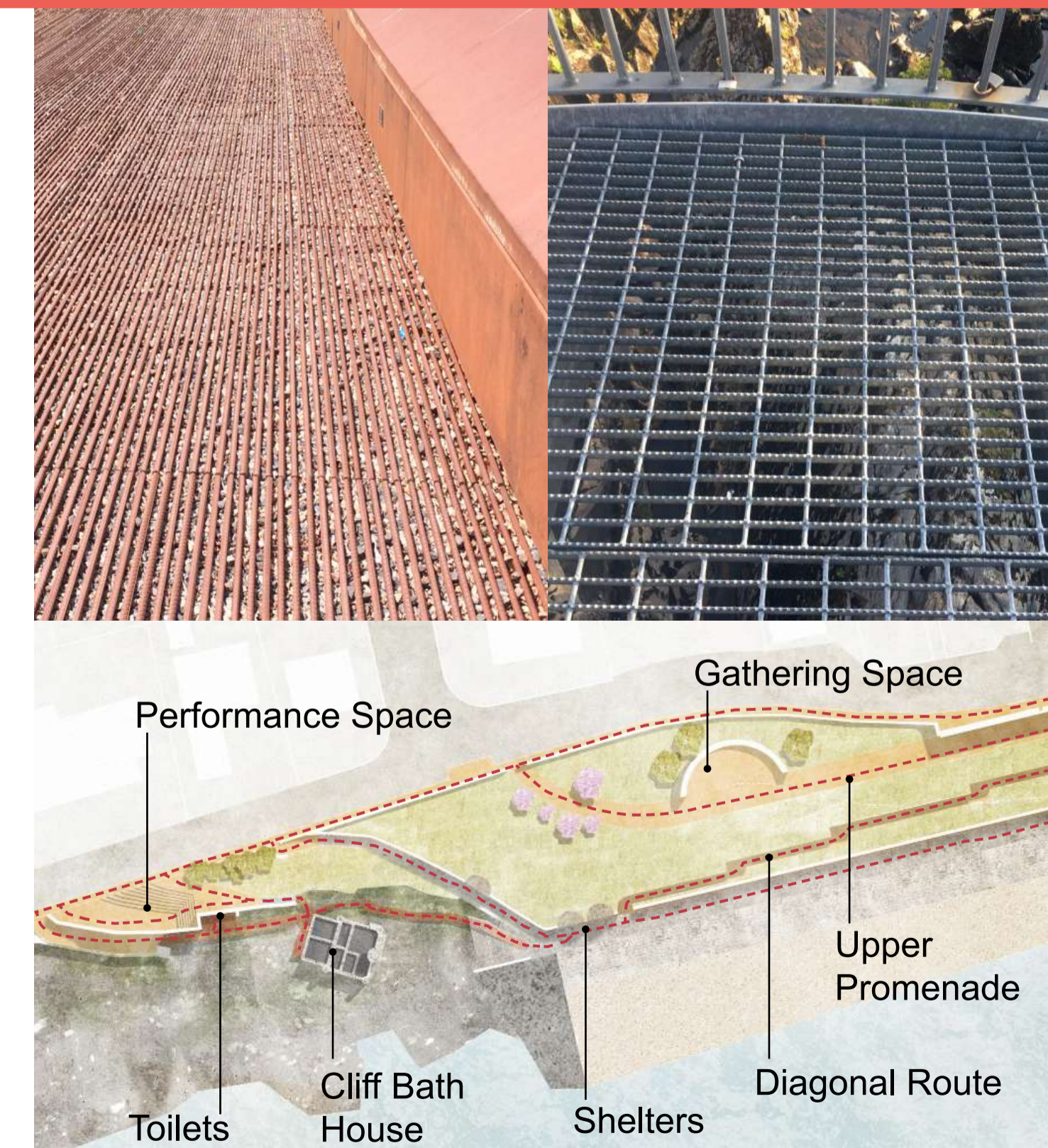
Cliff Bath Area

The route from the Cliff Road to the Cliff Bath House will be carefully considered in its entirety, with attention paid to how well the space invites people in from the wider public realm spaces.

We propose to provide access to the Cliff Bath building and its surrounding rock slabs by means of elevated or raised podiums, ramping or stepping to connect where necessary.

A new performance space will be provided to overlook the Bath House, with accessible toilet facilities housed below.

Continuity of materials and design is used to communicate the relationship between different spaces and connect the place back into the wider public realm.



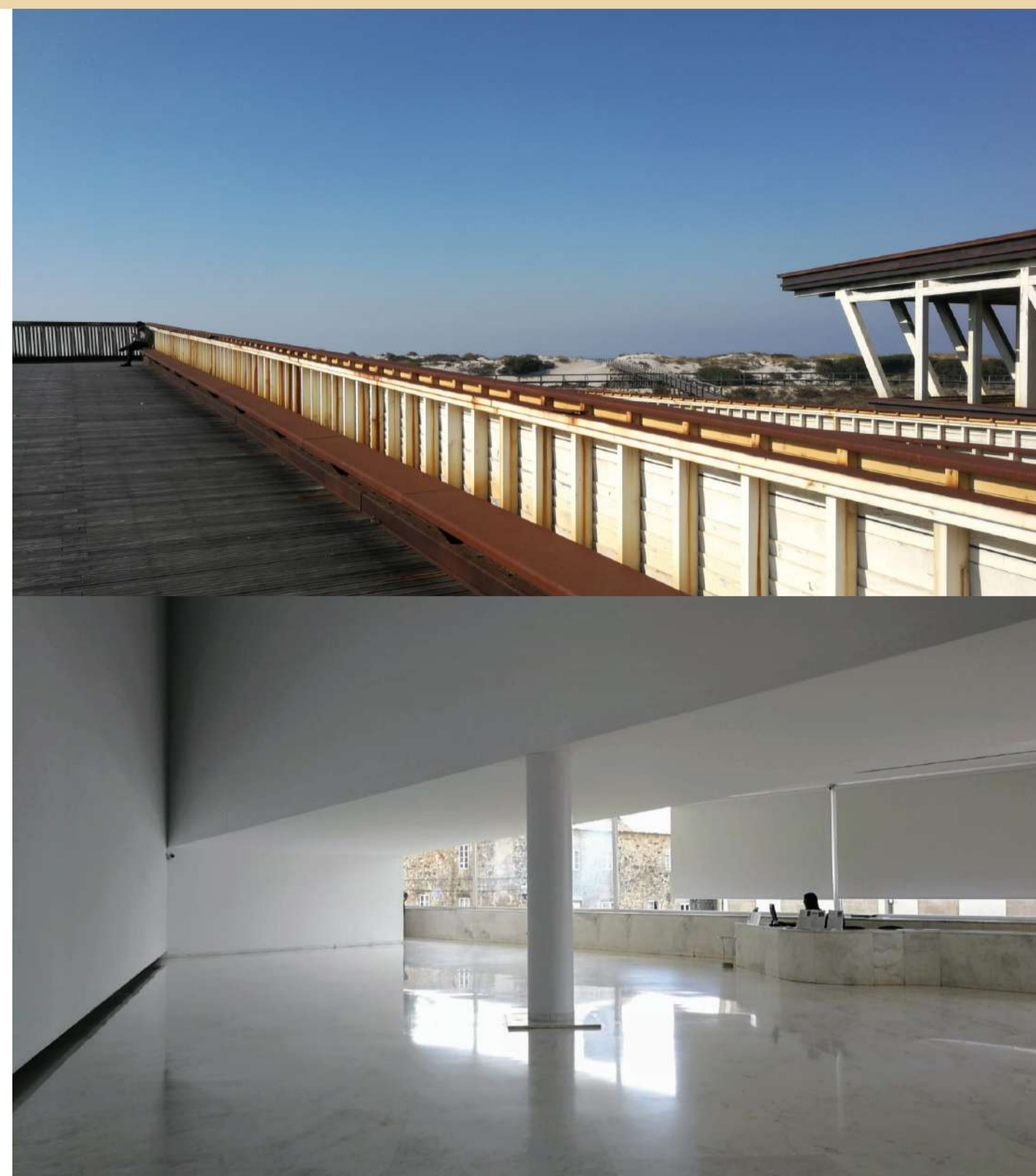
VISION + STRATEGY

New Use Community and Culture Space

Community and Culture Space

The pavilion will be close to the town centre, as well as being between the dunes and the Cliff Baths. The new pavilion will house a café, flexible community space, toilets and information kiosk. The location offers the opportunity to maximise views and avail of the benefits of sunlight and shelter.

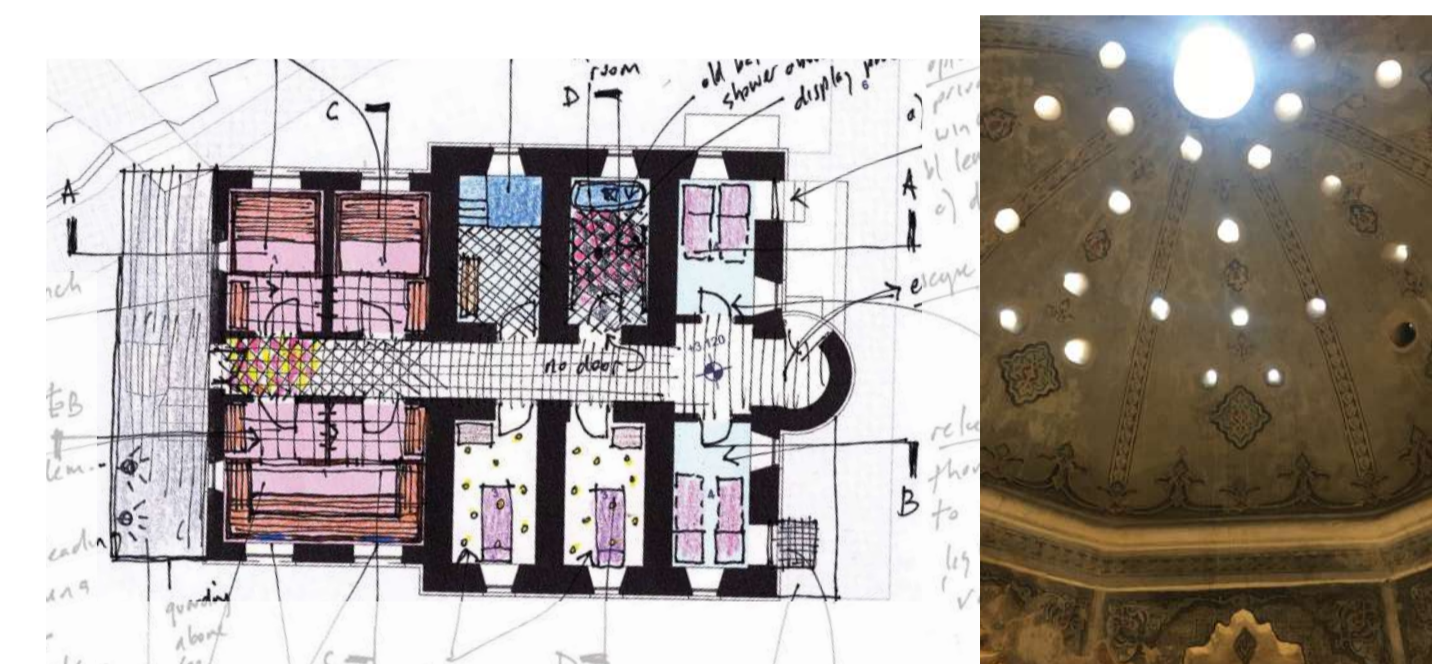
The main strategy is to house these primary functions within the escarpment so that the spaces can avail of uninterrupted views, as well as providing access and connection at all levels. A viewing deck at street level leading down to the café at mid-level with its viewing deck. The public kiosk, community room and toilets will be located at beach level. The café, discreet in form, is located at mid-level, surrounded by a viewing deck to the wider site and beyond.



Adaptive Re-use Seashore Wellness Centre

Victorian Bath House

This proposal is to re-purpose the Bath House into a seashore spa in the spirit of its former use. This option offers the user a unique experience of raw nature and wellness within the Victorian envelope. One of the original Victorian Seaweed Bathrooms will be conserved as an historical record of its previous use. Toilets and showers are to be located under the new performance space.



Ecology + Environmental Impact

Public Realm + Community/Culture

Sloped pathways and gentle steps are designed to follow the natural topography of the site with minimal impact on the existing site.

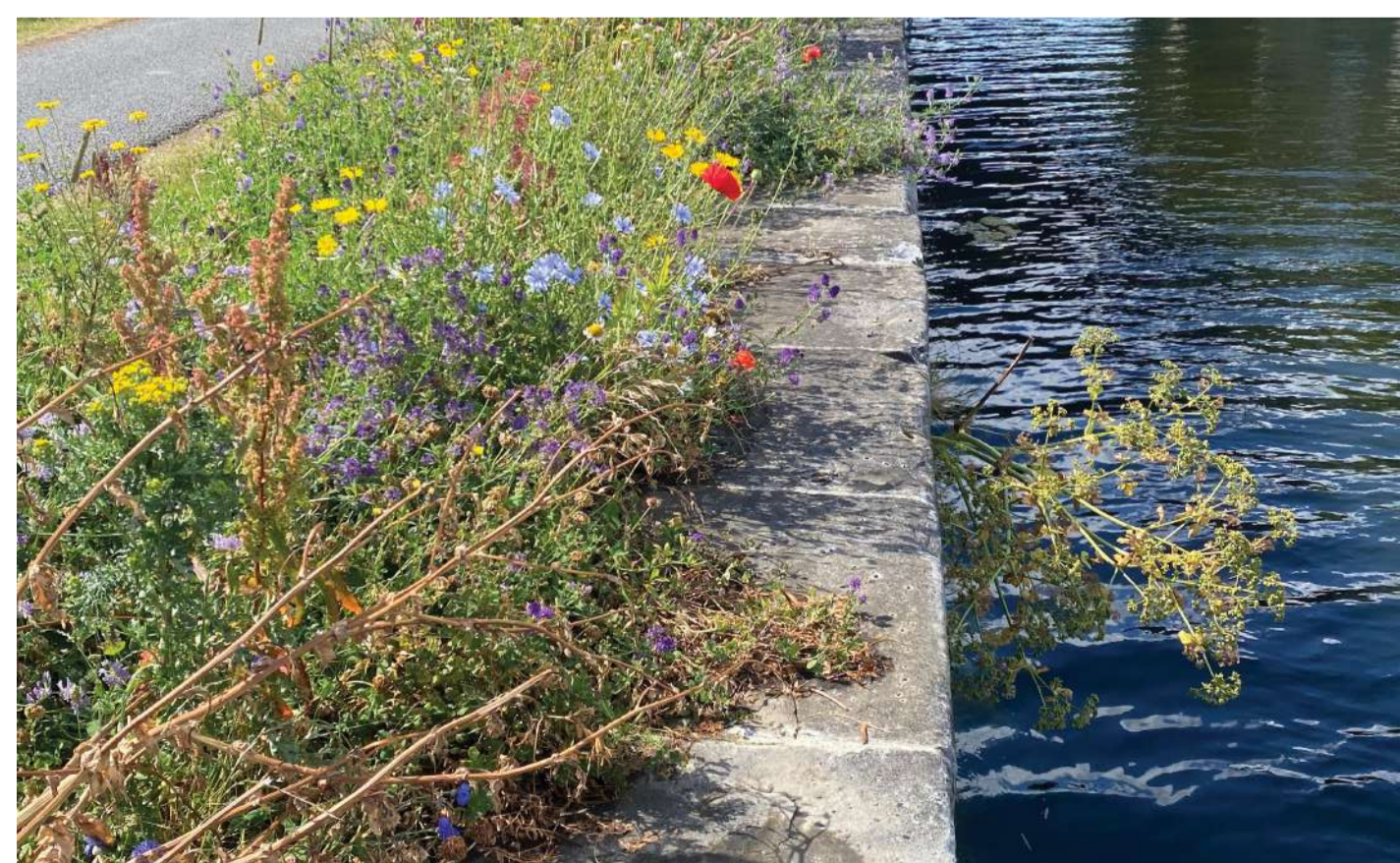
We intend to increase access to nature, to use sustainable materials and light touch construction methods with a focus on enhancing the biodiversity of the site.

The essence of the visual planting language is that it will seek out, recognise and celebrate our native coastal flora.

Often low growing but more often quite beautiful, the hardy coastal plants will be elevated from the lesser appreciated wildflowers to the celebrated ornamental perennial flowers, grasses and foliage plants that they truly are.

Cliff Baths

Low-impact interventions will allow safe access to the seashore and Bath House. Design will use robust materials suited for the harsh marine environment.



Heritage + Sustainable Future

Community and Culture

A new Community Centre with café will provide year round spaces for cultural and community activities, promoting the heritage of the local area.

Public Realm

In the 19th century, the local landlord, Robert Orme, designated that no building be built on the seaside of the road in order to protect the coastal views. The new pavilion will seek to honour his forward thinking by nestling it into the hillside below road level.



OSI Historic 25 map (1880-1913)

Cliff Baths

Conservation of the historical Bath House to ensure its viability into the future. As part of the conservation strategy, we are proposing a low impact adaptation of the building and its surroundings. The proposed use offers up the space to be accessible to everyone.



Robert French image of The Bath House c.1890, The Lawrence Collection, National Library of Ireland