

© COPYRIGHT OF THIS DRAWING IS RESERVED BY DBFL CONSULTING ENGINEERS. NO PART SHALL BE REPRODUCED OR TRANSMITTED WITHOUT THEIR WRITTEN PERMISSION. NO CHANGES OF WHATSOEVER NATURE ARE TO BE MADE TO ANY DETAILS SET OUT OR CONTAINED IN ANY DBFL SPECIFICATIONS OR DRAWINGS UNLESS THE EXPRESS CONSENT HAS BEEN OBTAINED IN ADVANCE, IN WRITING, FROM DBFL.

NOTES:

Legend

- Study Area Boundary (Phase 1)
- Study Area Boundary (Phase 2)
- Option A - Corridor along western side of N4
- Option B - Corridor along eastern side of N4
- Option C - Corridor along L3700 (Old N4)
- Option D - Alternative corridor via Tawnagh
- Option E - Alternative corridor via Ballyrush
- Option F - Alternative corridor via Cleavry
- Corridor Linkages
- Possible Corridor Switchover Nodes

Sligo County Council
Comhairle Chontae Shligigh

TIIV
Bonnasraí Ionpar Éireann
Transport Infrastructure Ireland

SLIGO Sligo.
OFFICE OF STRATEGIC INFRASTRUCTURE
REGIONAL DESIGN OFFICE

© NATIONAL MAPPING DIVISION OF TAILTE ÉIREANN

rev	date	description	by	chkd

STATUS CODES
purpose: P1 - INFORMATION
discipline: S - ISSUED

DBFL DBFL Consulting Engineers
Civil, Structural & Transportation Engineering
www.dbfl.ie

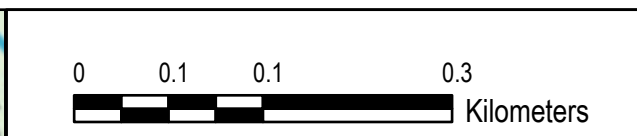
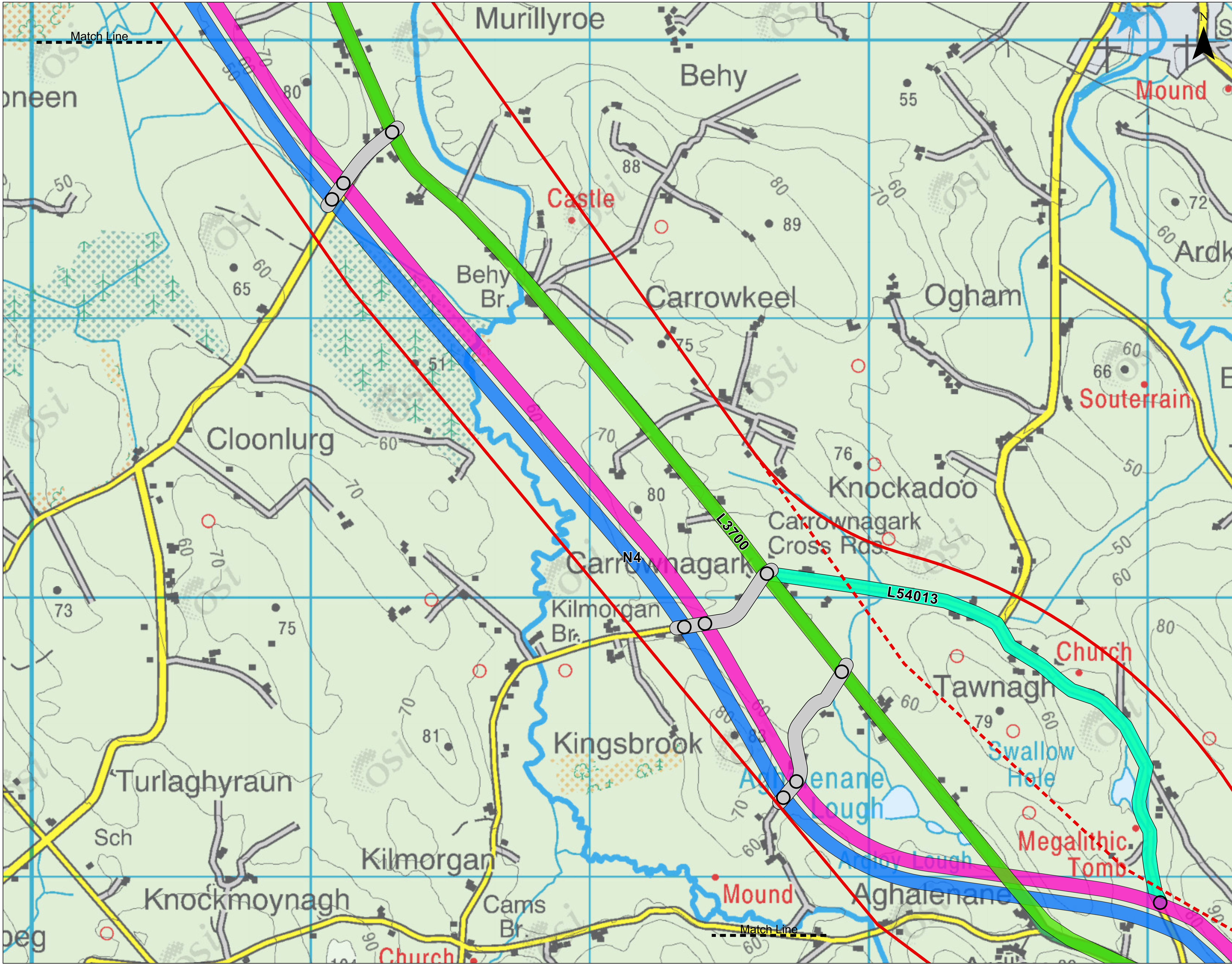
DUBLIN OFFICE: Ormeau House, Upper Ormeau Quay, Dublin 7, D07 W7K4
PHONE: +353 1 402 4002
CORR. OFFICE: 10 South Mall, Cork, T12 D7Y1
PHONE: +353 21 222 0238
WATERFORD OFFICE: Suite B5 The Forum, Marina Gate, Canada Street, Waterford, X91 WQ23
PHONE: +353 51 208 925
GALWAY OFFICE: Ocean House, 7 Eyre Square, Galway, H91 1N23
PHONE: +353 91 21 61 99

project ref.: N4 Active Travel - Coltony to Castlebaldwin

map title: Route Options - North Section

client: Sligo County Council

designed by:	author:	scale:	sheet size:
		1:5,000	A1
drawing no.:	revision:		
230122-X-90-X-XXX-DR-DBFL-0007	0		



© COPYRIGHT OF THIS DRAWING IS RESERVED BY DBFL CONSULTING ENGINEERS. NO PART SHALL BE REPRODUCED OR TRANSMITTED WITHOUT THEIR WRITTEN PERMISSION. NO CHANGES OF WHATSOEVER NATURE ARE TO BE MADE TO ANY DETAILS SET OUT OR CONTAINED IN ANY DBFL SPECIFICATIONS OR DRAWINGS UNLESS THE EXPRESS CONSENT HAS BEEN OBTAINED IN ADVANCE, IN WRITING, FROM DBFL.

- NOTES:
- Legend**
- Study Area Boundary (Phase 1)
 - Study Area Boundary (Phase 2)
 - Option A - Corridor along western side of N4
 - Option B - Corridor along eastern side of N4
 - Option C - Corridor along L3700 (Old N4)
 - Option D - Alternative corridor via Tawnagh
 - Option E - Alternative corridor via Ballyrush
 - Option F - Alternative corridor via Cleavry
 - Corridor Linkages
 - Possible Corridor Switchover Nodes

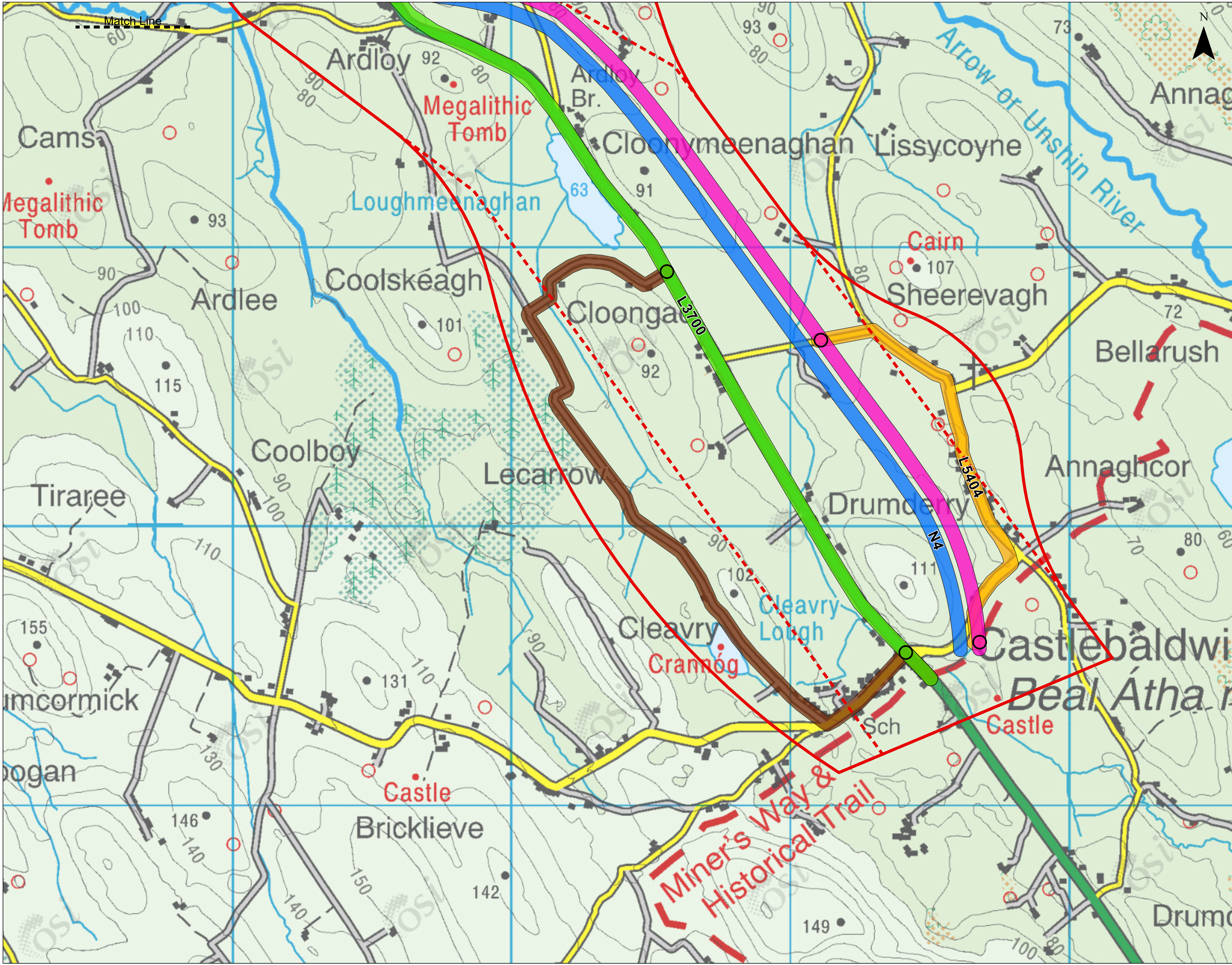


SLIGO Sligo.
OFFICE OF REGIONAL DESIGN AND PLANNING
 REGIONAL DESIGN OFFICE

© NATIONAL MAPPING DIVISION OF TAILTE ÉIREANN

rev	date	description	by	chkd

purpose		P1 - INFORMATION		revision		S - ISSUED	
DBFL Consulting Engineers <small>Civil, Structural & Transportation Engineering</small>				<small> DUBLIN OFFICE: Ormeau House, Upper Ormeau Quay, Dublin 7, D07 W7K4 PHONE: +353 1 400 4000 COLLEEN OFFICE: 18 South Main, Col. Hill, T12 D1P1 PHONE: +353 1 222 0828 WATERFORD OFFICE: Suite B5 The Forum, Marina Gate, Canada Street, Waterford, X91 W923 PHONE: +353 51 298 920 GALWAY OFFICE: O'Connell House, 7 Eyre Square, Galway, H91 YN03 PHONE: +353 91 21 61 66 </small>			
project ref.							
N4 Active Travel - Coltony to Castlebaldwin							
map title							
Route Options - Middle Section							
client							
Sligo County Council							
designed by	author	scale	1:6,000	sheet size	A1		
drawing no.		230122-X-90-X-XXX-DR-DBFL-0008		revision	0		



0 0.1 0.1 0.3 Kilometers

© COPYRIGHT OF THIS DRAWING IS RESERVED BY DBFL CONSULTING ENGINEERS. NO PART SHALL BE REPRODUCED OR TRANSMITTED WITHOUT THEIR WRITTEN PERMISSION. NO CHANGES OF WHATSOEVER NATURE ARE TO BE MADE TO ANY DETAILS SET OUT OR CONTAINED IN ANY DBFL SPECIFICATIONS OR DRAWINGS UNLESS THE EXPRESS CONSENT HAS BEEN OBTAINED IN ADVANCE, IN WRITING, FROM DBFL.

NOTES:

Legend

- Study Area Boundary (Phase 1)
- Study Area Boundary (Phase 2)
- Option A - Corridor along western side of N4
- Option B - Corridor along eastern side of N4
- Option C - Corridor along L3700 (Old N4)
- Option D - Alternative corridor via Tawnagh
- Option E - Alternative corridor via Ballyrush
- Option F - Alternative corridor via Cleavry
- Corridor Linkages
- Possible Corridor Switchover Nodes

Sligo County Council
Comhairle Chontae Shligigh

TII
Bonnasraíocht Éireann
Transport Infrastructure Ireland

SLIGO Sligo.
REGIONAL DESIGN OFFICE

© NATIONAL MAPPING DIVISION OF TAILTE ÉIREANN

rev	date	description	by	chkd

STATUS CODES

Purpose: P1 - INFORMATION

DBFL Consulting Engineers
Civil, Structural & Transportation Engineering

DBFL
DUBLIN OFFICE: Ormeau House, Upper Ormeau Quay, Dublin 7, D07 W7K4
PHONE: +353 1 400 4000
CORK OFFICE: 18 South Mall, Cork, T12 D1P1
PHONE: +353 21 252028

WATERFORD OFFICE: Suite B5 The Forum, Marina Gate, Canada Street, Waterford, X91 WQ20
PHONE: +353 51 294920

GALWAY OFFICE: Ocean House, 7 Eyre Square, Galway, H91 1N23
PHONE: +353 91 21 61 99

project ref:

N4 Active Travel - Colleeny to Castlebaldwin

map title:

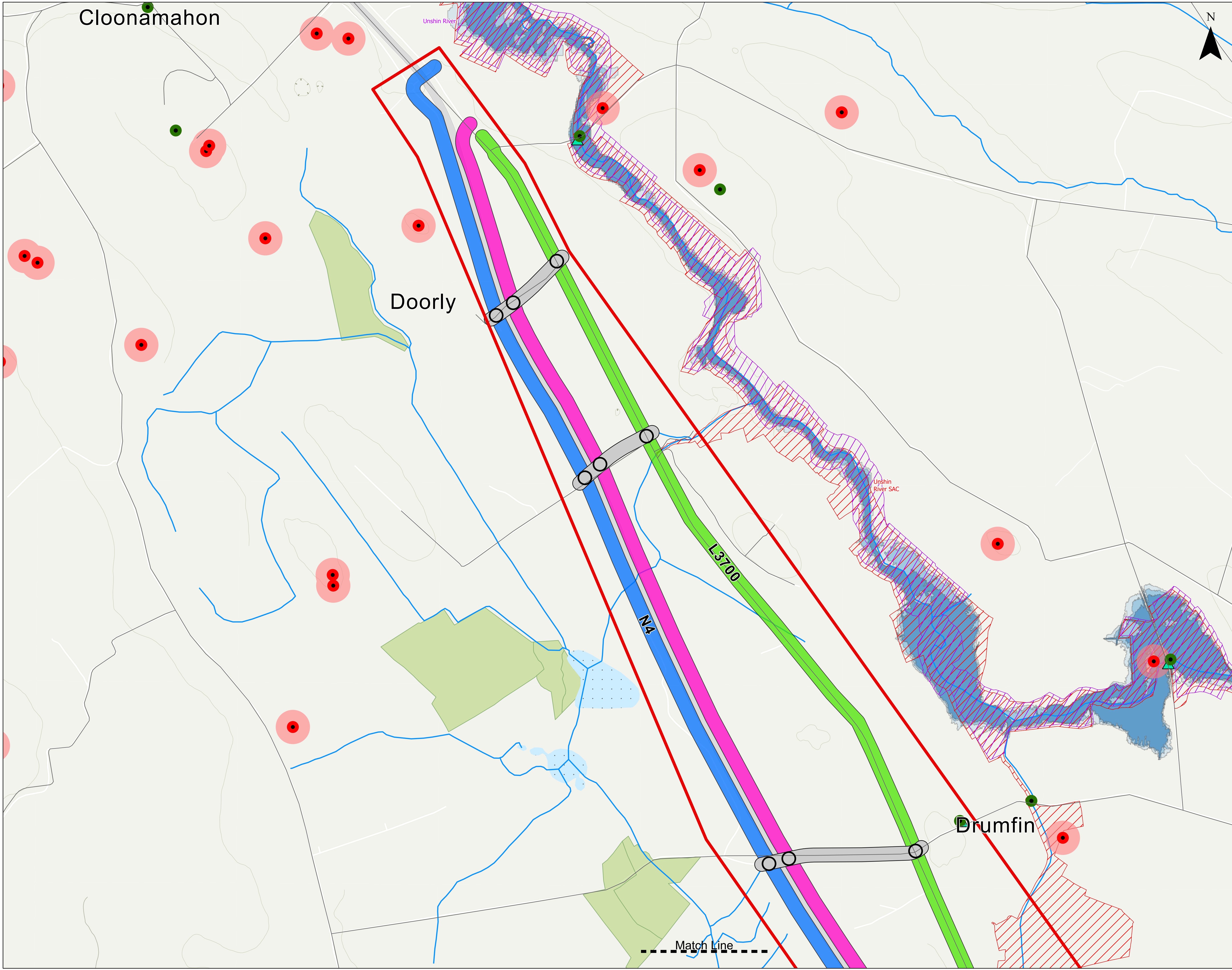
Route Options - South Section

client:

Sligo County Council

designed by	author	scale	sheet size
		1:6,000	A1

drawing no. 230122-X-90-X-XXX-DR-DBFL-0009



Cloonamahon

Doorly

Drumfin

Match Line



© COPYRIGHT OF THIS DRAWING IS RESERVED BY DBFL CONSULTING ENGINEERS. NO PART SHALL BE REPRODUCED OR TRANSMITTED WITHOUT THEIR WRITTEN PERMISSION. NO CHANGES OF WHATSOEVER NATURE ARE TO BE MADE TO ANY DETAILS SET OUT OR CONTAINED IN ANY DBFL SPECIFICATIONS OR DRAWINGS UNLESS THE EXPRESS CONSENT HAS BEEN OBTAINED IN ADVANCE, IN WRITING, FROM DBFL.

NOTES:

Legend

- Study Area Boundary (Phase 2)
- Option A - Corridor along western side of N4
- Option B - Corridor along eastern side of N4
- Option C - Corridor along L3700 (Old N4)
- Option D - Alternative corridor via Tawnagh
- Option E - Alternative corridor via Ballyrush
- Option F - Alternative corridor via Cleavry
- Corridor Linkages
- Possible Corridor Switchover Nodes
- Match Line
- Fluvial Flood - Low Probability
- Fluvial Flood - Medium Probability
- Fluvial Flood - High Probability
- National Monuments
- Recorded Monuments
- SMR Zone of Notification
- Heritage Trees of Ireland
- Protected Structures
- ▲ NIAH Sites
- Natural Heritage Areas
- Potential Natural Heritage Areas
- Special Areas of Conservation SAC
- Special Protection Areas SPA
- Rivers
- Lakes
- Coillte Forest Inventory

Sligo County Council
Comhairle Chontae Shligigh

TIIV
Tioncharraíocht Innealtóireachta agus Innealtóireacht

SLIGO Sligo.
CIVIL DEPARTMENT/RESEARCH, REGIONAL DESIGN OFFICE

SOURCES: ESRI, USGS, CNES/AIRBUS DS, INTERMAP, KARTVERKET, LINZ, NASA/METI.

rev	date	description	by	chkd

STATUS CODES
purpose: P1 - INFORMATION
acceptance: S - ISSUED

DBFL DBFL Consulting Engineers
Civil, Structural & Transportation Engineering
www.dbfl.ie

DUBLIN OFFICE: Ormeau House, Upper Ormeau Quay, Dublin 7, D07 W7K4
PHONE: +353 1 402 4000

COBURG OFFICE: 16 South Mall, Cork, T12 D1P9
PHONE: +353 21 222 0268

WATERFORD OFFICE: Suite B5 The Millium, Marina Gate, Canada Street, Waterford, X91 W925
PHONE: +353 51 268 925

GALWAY OFFICE: O'Connell House, 7 Eyre Square, Galway, H91 N1C3
PHONE: +353 91 21 61 99

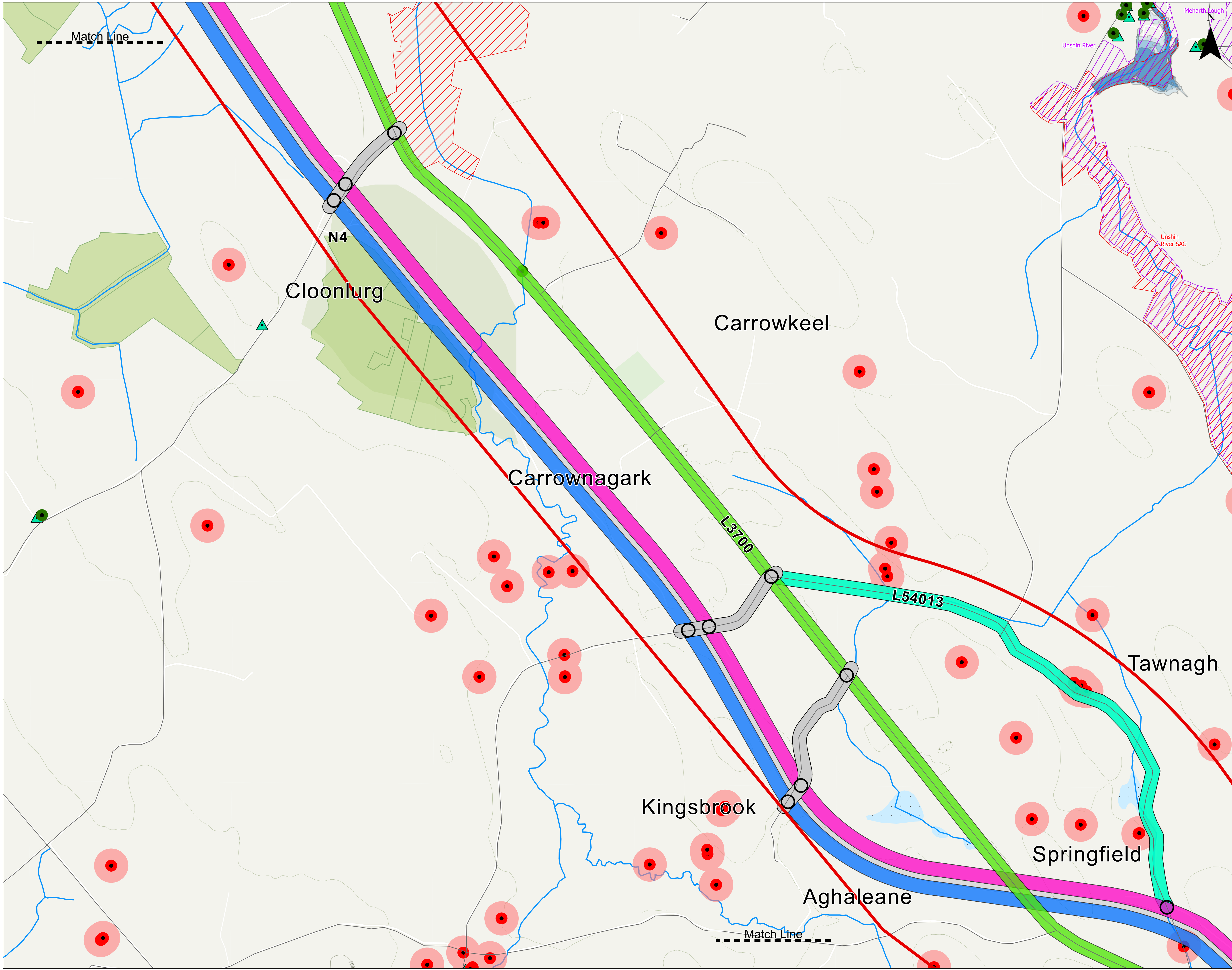
project ref:
N4 Active Travel - Colloney to Castlebaldwin

map title:
Route Options - North Section

client:
Sligo County Council

designed by	author	scale	sheet size
		1:5,000	A1

Drawing no. 230122-X-90-X-XXX-DR-DBFL-00010



0 0.1 0.2 0.3 Kilometers

© COPYRIGHT OF THIS DRAWING IS RESERVED BY DBFL CONSULTING ENGINEERS. NO PART SHALL BE REPRODUCED OR TRANSMITTED WITHOUT THEIR WRITTEN PERMISSION. NO CHANGES OF WHATSOEVER NATURE ARE TO BE MADE TO ANY DETAILS SET OUT OR CONTAINED IN ANY DBFL SPECIFICATIONS OR DRAWINGS UNLESS THE EXPRESS CONSENT HAS BEEN OBTAINED IN ADVANCE, IN WRITING, FROM DBFL.

NOTES:

Legend

- Study Area Boundary (Phase 2)
- Option A - Corridor along western side of N4
- Option B - Corridor along eastern side of N4
- Option C - Corridor along L3700 (Old N4)
- Option D - Alternative corridor via Tawnagh
- Option E - Alternative corridor via Ballyrush
- Option F - Alternative corridor via Cleavry
- Corridor Linkages
- Possible Corridor Switchover Nodes
- Match Line
- Fluvial Flood - Low Probability
- Fluvial Flood - Medium Probability
- Fluvial Flood - High Probability
- National Monuments
- Recorded Monuments
- SMR Zone of Notification
- Heritage Trees of Ireland
- Protected Structures
- NIAH Sites
- Natural Heritage Areas
- Potential Natural Heritage Areas
- Special Areas of Conservation SAC
- Special Protection Areas SPA
- Rivers
- Lakes
- Coillte Forest Inventory

Sligo County Council
Comhairle Chontae Shligigh

TII
Bonnagar Kampar Eireann

SLIGO Sligo
OFFICE OF REGIONAL DESIGN
REGIONAL DESIGN OFFICE

SOURCES: ESRI, USGS, CNES/AIRBUS DS, INTERMAP, KARTVERKET, LINZ, NASA/METI.

rev	date	description	by	chkd.

STATUS CODES

Purpose: P1 - INFORMATION

DBFL Consulting Engineers
Civil, Structural & Transportation Engineering

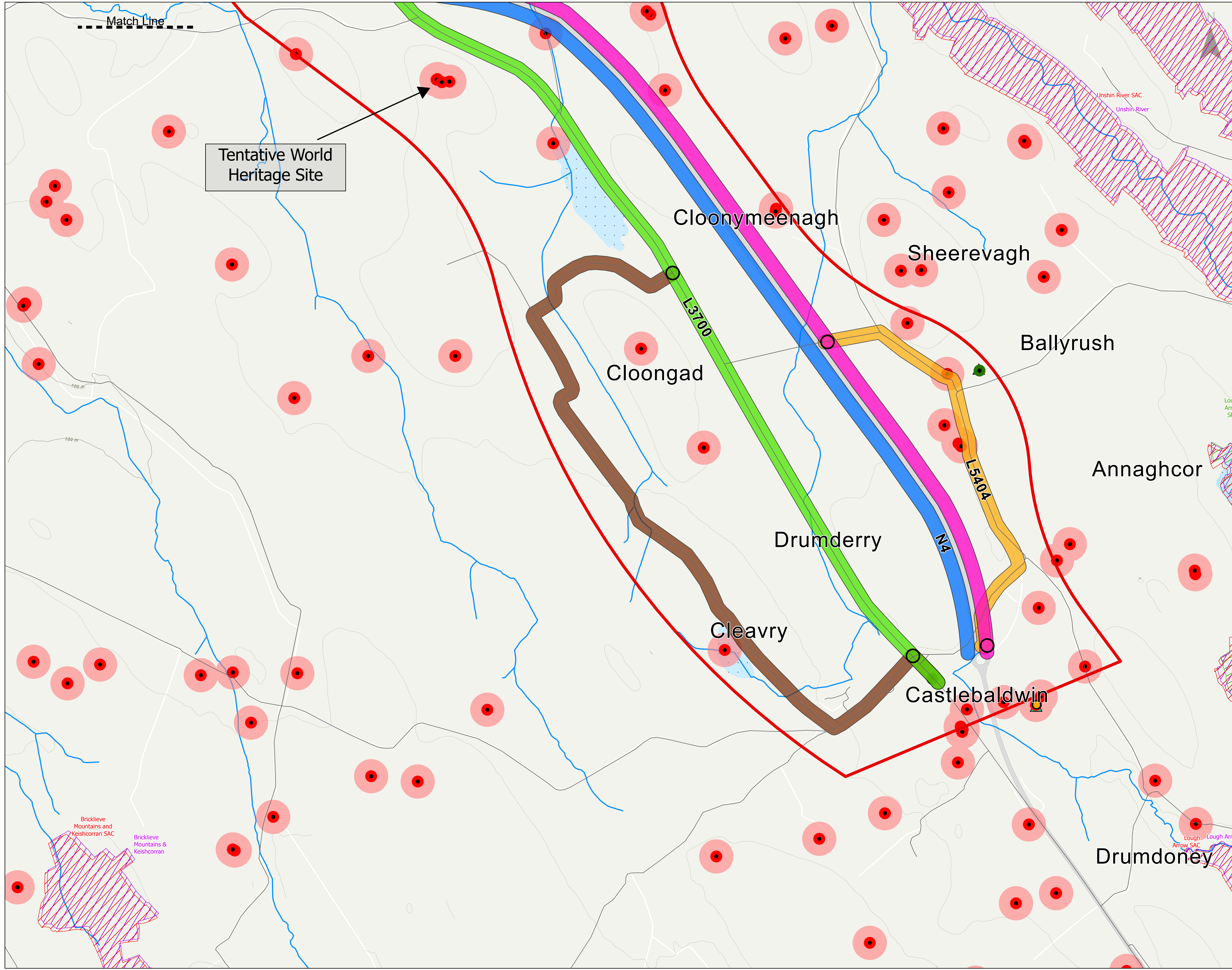
DBFL
DUBLIN OFFICE: Ormeau House, Upper Ormeau Quay, Dublin 7, D07 W7K4
PHONE: +353 1 402 4000
DUBLIN OFFICE: 16 South Main, Cork, T12 D1P1
PHONE: +353 21 222028
WATERFORD OFFICE: Suite B5 The Forum, Marina Gate, Canada Street, Waterford, X91 W925
PHONE: +353 51 208 925
GALWAY OFFICE: O'Connell House, 7 Eyre Square, Galway, H91 YN03
PHONE: +353 91 21 61 99

project ref:
N4 Active Travel - Colloney to Castlebaldwin

map title:
Route Options - Middle Section

client:
Sligo County Council

designed by	author	scale	sheet size
		1:5,000	A1
drawing no.			revision
230122-X-90-X-XXX-DR-DBFL-00011			0



0 0.1 0.1 0.3 Kilometers

© COPYRIGHT OF THIS DRAWING IS RESERVED BY DBFL CONSULTING ENGINEERS. NO PART SHALL BE REPRODUCED OR TRANSMITTED WITHOUT THEIR WRITTEN PERMISSION. NO CHANGES OF WHATSOEVER NATURE ARE TO BE MADE TO ANY DETAILS SET OUT OR CONTAINED IN ANY DBFL SPECIFICATIONS OR DRAWINGS UNLESS THE EXPRESS CONSENT HAS BEEN OBTAINED IN ADVANCE, IN WRITING, FROM DBFL.

NOTES:

Legend

- Study Area Boundary (Phase 2)
- Option A - Corridor along western side of N4
- Option B - Corridor along eastern side of N4
- Option C - Corridor along L3700 (Old N4)
- Option D - Alternative corridor via Tawnagh
- Option E - Alternative corridor via Ballyrush
- Option F - Alternative corridor via Cleavry
- Corridor Linkages
- Possible Corridor Switchover Nodes
- Match Line
- Fluvial Flood - Low Probability
- Fluvial Flood - Medium Probability
- Fluvial Flood - High Probability
- National Monuments
- Recorded Monuments
- SMR Zone of Notification
- Heritage Trees of Ireland
- Protected Structures
- NIAH Sites
- Natural Heritage Areas
- Potential Natural Heritage Areas
- Special Areas of Conservation SAC
- Special Protection Areas SPA
- Rivers
- Lakes
- Coillte Forest Inventory

Sligo County Council
Comhairle Chontae Shligigh

TIIV
Bonnogair Koinpar Eireann

SLIGO Sligo.
Sligo Regional Design Office

SOURCES: ESRI, USGS, CNES/AIRBUS DS, INTERMAP, KARTVERKET, LINZ, NASA/METI.

rev	date	description	by	chkd.

STATUS CODES

purpose: P1 - INFORMATION

discipline: S - ISSUED

DBFL DBFL Consulting Engineers
Civil, Structural & Transportation Engineering
www.dbfl.ie

DUBLIN OFFICE: Ormeau House, Upper Ormeau Quay, Dublin 7, D07 W7K4
PHONE: +353 1 402 4000

COBURG OFFICE: 18 South Mall, Cork, T12 D7Y1
PHONE: +353 21 222 0238

WATERFORD OFFICE: Suite B8 The Millium, Marina Gate, Canada Street Waterford X91 W923
PHONE: +353 51 284 925

GALWAY OFFICE: O'Connell House, 7 Eyre Square, Galway H91 YN03
PHONE: +353 91 21 61 99

project ref.: N4 Active Travel - Colloney to Castlebaldwin

map title: Route Options - South Section

client: Sligo County Council

designed by: author: scale: 1:5,000 sheet size: A1

drawing no.: 230122-X-90-X-XXX-DR-DBFL-00012 revision: 0