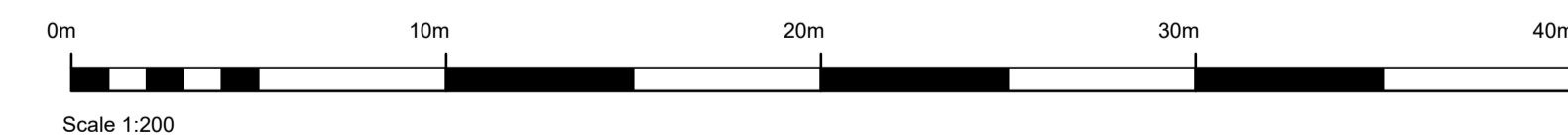
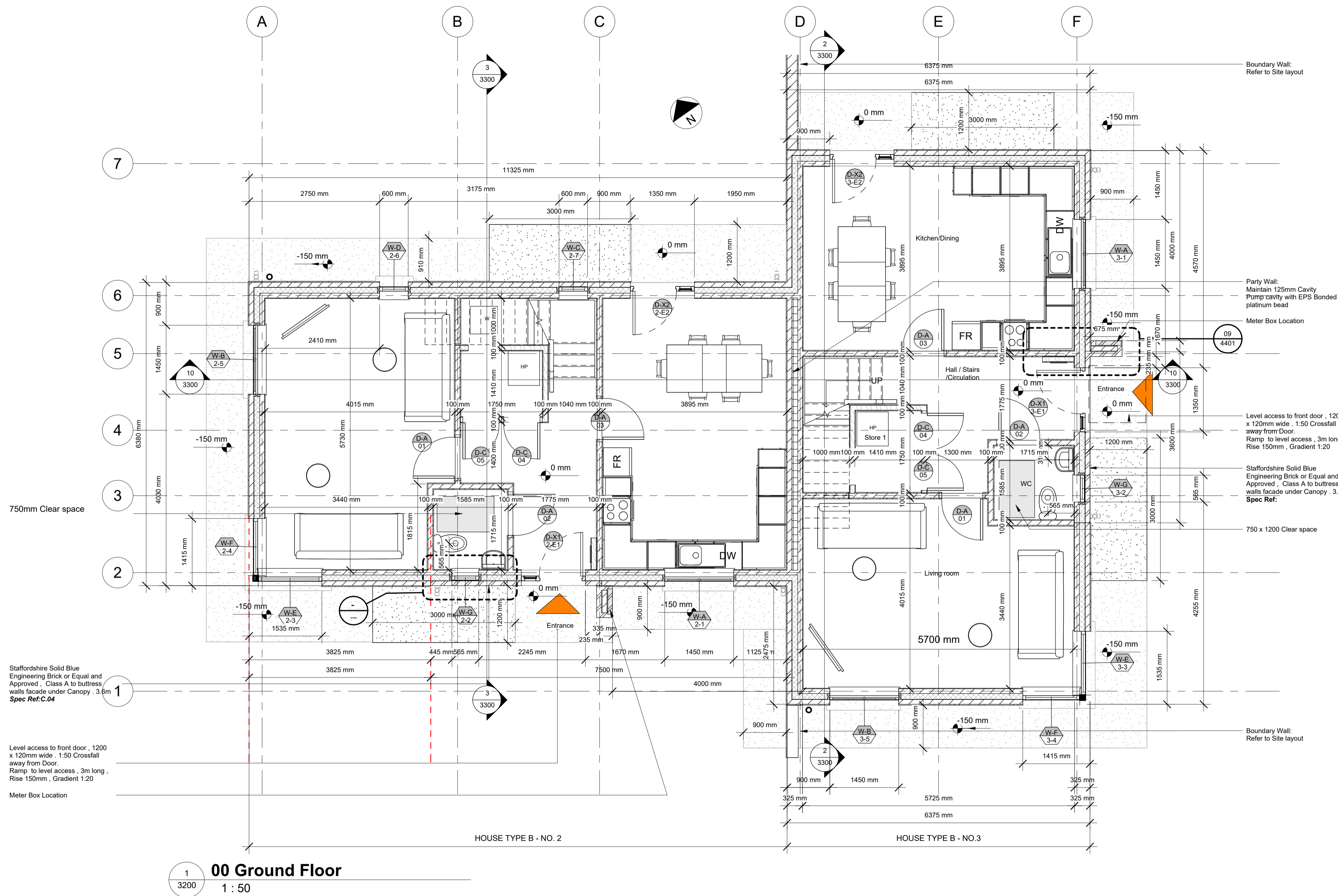


DO NOT SCALE FROM THIS DRAWING.
 ALL FIGURED DIMENSIONS ARE TO BE CHECKED ON SITE. ANY ERRORS OR OMISSIONS ARE TO BE IMMEDIATELY REPORTED TO SLIGO COUNTY COUNCIL LEAD ARCHITECT OR REPRESENTATIVE.
 ALL CONSTRUCTION PRACTICES ARE TO CONFORM WITH CURRENT BUILDING REGULATIONS.

WALL LEGEND		1:50
	External Wall 100mm Block dense block outer leaf, 125mm cavity with 125mm full fill PIR, 100mm dense block inner leaf, External render 4 coat application, Internal plaster min 13mm. U-value 0.16	
	External Wall Engineering Brick, Class A, Staffordshire Solid Blue, Outer leaf, 125mm cavity with 125mm full fill PIR, 100mm dense block inner leaf, External render 3 part application min 20mm, Internal plaster min 13mm. U-value 0.16	
	External Buttress Wall Engineering Brick, Class A, Staffordshire Solid Blue facing with 100mm dense block internal	
	Foundation Wall 100mm Block to Eng Spec and design, Built to form 325mm Foundation Rising Wall	
	Foundation Wall 100mm Block to Eng Spec and design, Foundation to Rising Wall	
	Internal Wall 100mm Block to Eng Spec and design, Internal plaster both sides min 13mm	
	Internal Wall 100 x 44mm C16 studs to Eng Spec and design, 100mm acoustic insulation to studs with Thermal conductivity of 0.036 W/mK, 12.5mm plasterboard with skim finish	
	Thermal Block Roadstone Lite Block or equal and approved, Thermal conductivity 0.18W/m²K	

SYMBOL LEGEND	
	Ref 1 ELEVATION NUMBER
	N NORTH POINT
	1 REVISION NUMBER
	1 A101 SECTION HEAD / DIRECTION MARKER NUMBER / SHEET
	SPOT LEVEL MARKER
	1 A101 DETAIL CALL OUT
	SPOT LEVEL ELEVATION
	3 NOTES TAG
	D-A 01 DOOR TAG TYPE / NUMBER
	W-A 01 WINDOW TAG TYPE / NUMBER



Rev.No.	Comment	Date
C01	Planning Complete for Issue	27/10/23

Code	Description
S0	WORK IN PROGRESS
S1	COORDINATION
S2	INFORMATION
S3	REVIEW COMMENT
S4	CONSTRUCTION APPROVAL
S5	REVIEW AND ACCEPTANCE
A0	STAGE 0 DELIVERABLES (URBAN DESIGN AND STRATEGIC)
A1	STAGE 1 DELIVERABLE (CAPACITY/FEASIBILITY)
A2	STAGE 2 DELIVERABLE (PLANNING PERMISSION)
A3	STAGE 3 DELIVERABLE (TECHNICAL DESIGN/TENDER)
A4	STAGE 4 DELIVERABLE (CONSTRUCTION)
A5	STAGE 5 DELIVERABLE (HANDOVER)
A6	STAGE 6 DELIVERABLE (USE / POE, ETC.)
T1	TENDER STAGE 1 (MULTIPLE TENDERS)
T2	TENDER STAGE 2 (MULTIPLE TENDERS)
T3	TENDER STAGE 3 (MULTIPLE TENDERS)
CP	COMPLIANCE STATUTORY
AS	AS CONSTRUCTED RECORD DOCUMENT
DA	DISABILITY ACCESS CERT
FC	FIRE CERT

Code	Description
P01	P CODES ARE PRELIMINARY/PROGRESS REVISIONS ETC. P01, P02, P03 ETC.
C01, C02, C03 ETC	C CODES ARE CONTRACTUAL OR COMPLETE REVISIONS
REVISION NUMBERING	RESTARTS PER WORK STAGE



SLIGO COUNTY COUNCIL
 HOUSING CAPITAL TEAM

Purpose of Issue : **Planning**



Key Plan



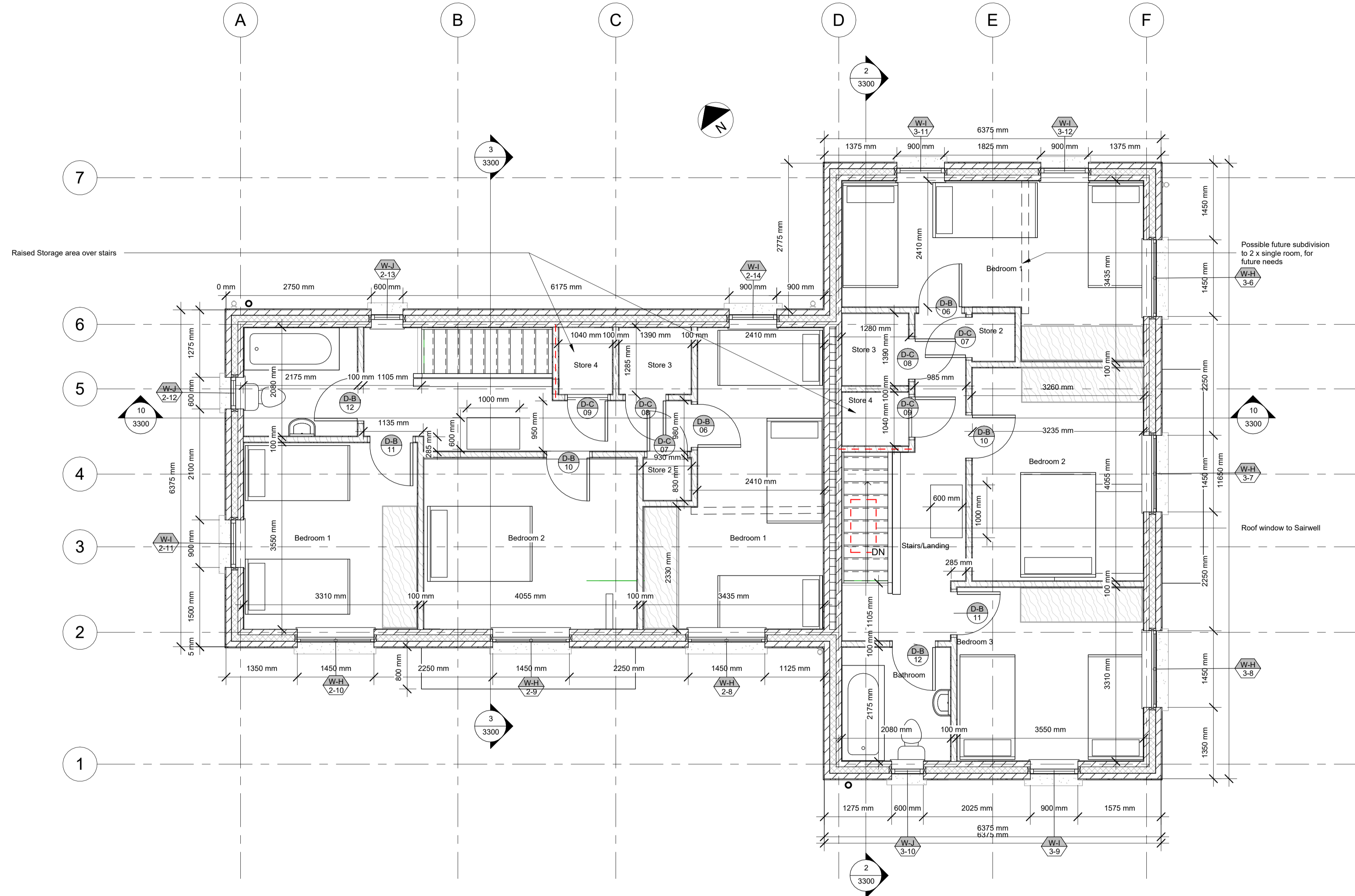
Sligo County Council, County Hall, Riverside, Sligo. F91Y763	
Glenview Park Group Housing	PROJECT NO: 1.18.18 STATUS: A3
House Type B - Ground Floor Plan	DRAWING NO: 3100 SCALE: 1:100 REVISION: C01
DRAWN BY: JS	Originator- Lvs & Loc- Roles No.
CHECKED BY: MOC	Project Number: 1.18.18- SCC- HTB- ZZ- DR- A- 3100



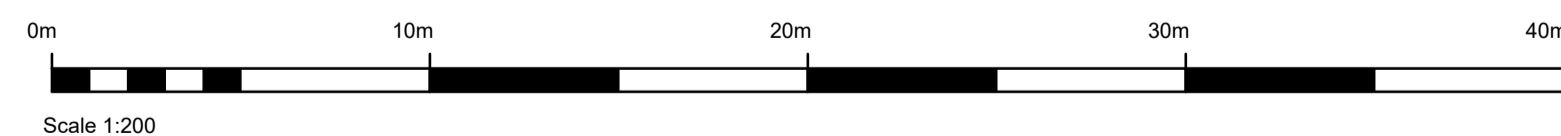
DO NOT SCALE FROM THIS DRAWING.
 ALL FIGURED DIMENSIONS ARE TO BE CHECKED ON SITE. ANY ERRORS OR OMISSIONS ARE TO BE IMMEDIATELY REPORTED TO SLIGO COUNTY COUNCIL LEAD ARCHITECT OR REPRESENTATIVE.
 ALL CONSTRUCTION PRACTICES ARE TO CONFORM WITH CURRENT BUILDING REGULATIONS.

WALL LEGEND		1:50
	External Wall 100mm Block dense block outer leaf, 125mm cavity with 125mm full fill PIR, 100mm dense block inner leaf. External render 4 coat application, Internal plaster min 13mm. U-value 0.16	
	External Wall Engineering Brick, Class A, Staffordshire Solid Blue, Outer leaf, 125mm cavity with 125mm full fill PIR, 100mm dense block inner leaf. External render 3 part application min 20mm, Internal plaster min 13mm. U-value 0.16	
	External Buttress Wall Engineering Brick, Class A, Staffordshire Solid Blue facing with 100mm dense block internal	
	Foundation Wall 100mm Block to Eng Spec and design, Built to form 325mm Foundation Rising Wall	
	Foundation Wall 100mm Block to Eng Spec and design, Foundation to Rising Wall	
	Internal Wall 100mm Block to Eng Spec and design, Internal plaster both sides min 13mm	
	Internal Wall 100 x 44mm C16 studs to Eng Spec and design, 100mm acoustic insulation to studs with Thermal conductivity of 0.036 W/mK, 12.5mm plasterboard with skim finish	
	Thermal Block Roadstone Lite Block or equal and approved, Thermal conductivity 0.18W/m²K	

SYMBOL LEGEND	
	ELEVATION NUMBER
	NORTH POINT
	REVISION NUMBER
	SECTION HEAD / DIRECTION MARKER NUMBER / SHEET
	SPOT LEVEL MARKER
	DETAIL CALL OUT
	SPOT LEVEL ELEVATION
	NOTES TAG
	DOOR TAG TYPE / NUMBER
	WINDOW TAG TYPE / NUMBER



01 First Floor
1 : 50



Rev.No.	Comment	Date
CD1	Planning Complete for Issue	27/10/23

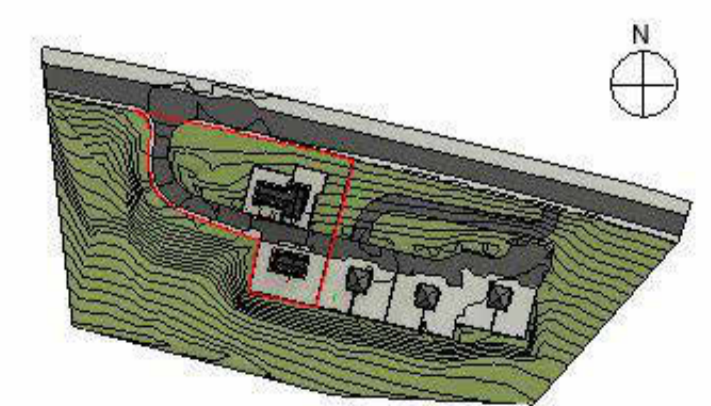
Code	Description
S0	WORK IN PROGRESS
S1	COORDINATION
S2	INFORMATION
S3	REVIEW COMMENT
S4	CONSTRUCTION APPROVAL
S5	REVIEW AND ACCEPTANCE
A0	STAGE 0 DELIVERABLES (URBAN DESIGN AND STRATEGIC)
A1	STAGE 1 DELIVERABLE (CAPACITY/FEASIBILITY)
A2	STAGE 2 DELIVERABLE (SCHEME DESIGN)
A3	STAGE 3 DELIVERABLE (PLANNING PERMISSION)
A4	STAGE 4 DELIVERABLE (TECHNICAL DESIGN/TENDER)
A5	STAGE 5 DELIVERABLE (CONSTRUCTION)
A6	STAGE 6 DELIVERABLE (HANDOVER)
A7	STAGE 7 DELIVERABLE (USE / POE, ETC.)
T1	TENDER STAGE 1 (MULTIPLE TENDERS)
T2	TENDER STAGE 2 (MULTIPLE TENDERS)
T3	TENDER STAGE 3 (MULTIPLE TENDERS)
CP	COMPLIANCE STATUTORY
CR	AS CONSTRUCTED RECORD DOCUMENT
DA	DISABILITY ACCESS CERT
FC	FIRE CERT

Code	Description
P01	P CODES ARE PRELIMINARY/PROGRESS REVISIONS ETC. P01, P02, P03 ETC.
C01, C02, C03 ETC.	C CODES ARE CONTRACTUAL OR COMPLETE REVISIONS
	REVISION NUMBERING RESTARTS PER WORK STAGE



SLIGO COUNTY COUNCIL
HOUSING CAPITAL TEAM

Purpose of Issue : **Planning**



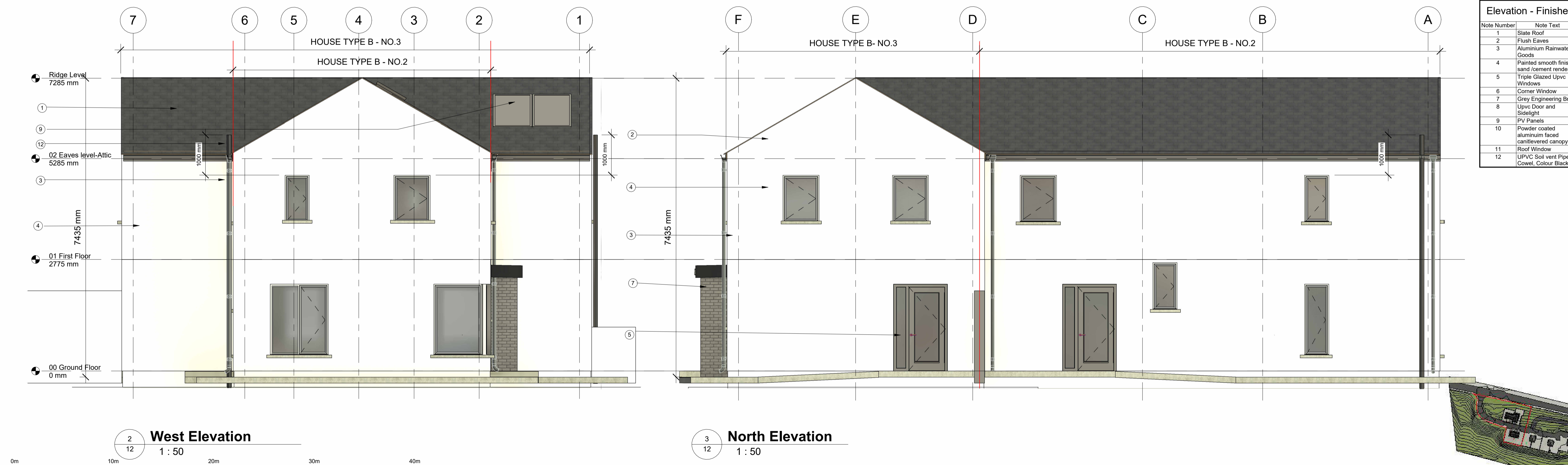
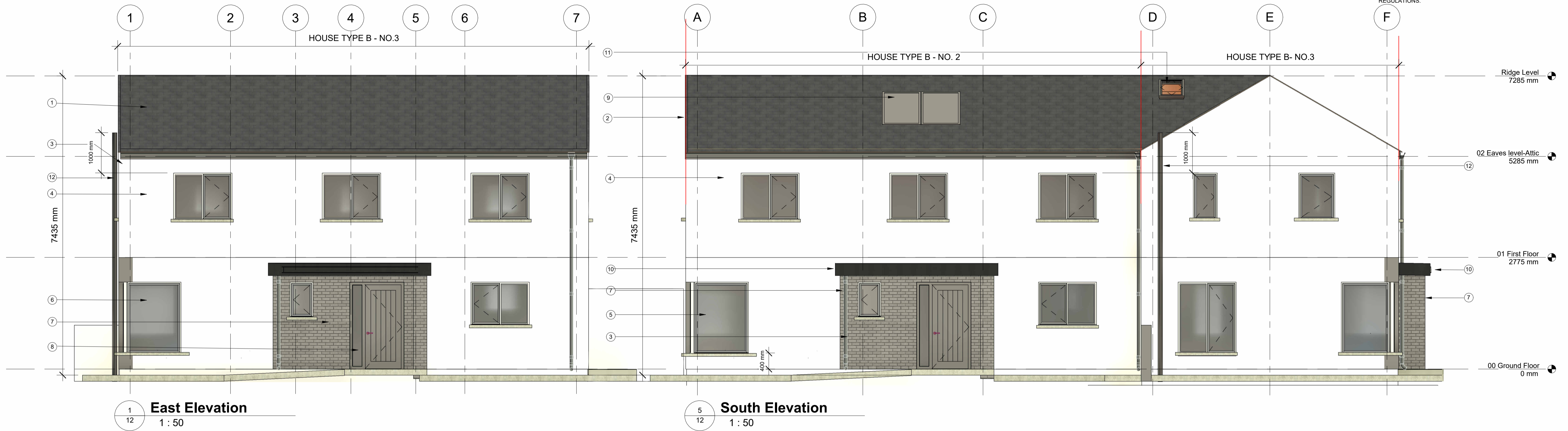
Key Plan



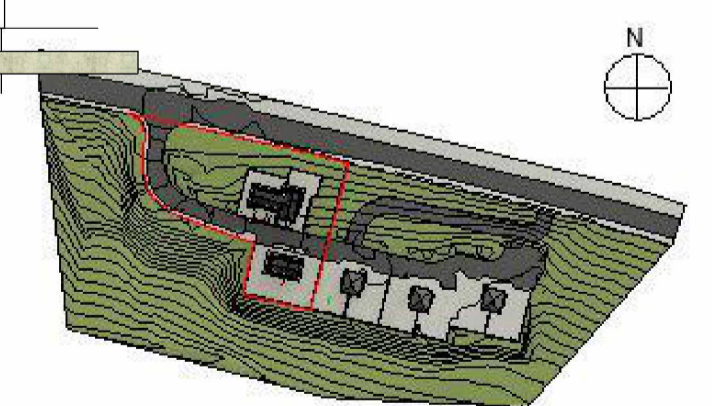
Sligo County Council, County Hall, Riverside, Sligo. F91Y763	
PROJECT TITLE Glenview Park Group Housing	PROJECT NO. 1.18.18
DRAWING TITLE House Type B- First Floor Plan	FIRST ISSUE DATE 19/10/2022
DRAWN BY JS	STATUS A3
CHECKED BY MOC	REVISION C01
SCALE 1:100	ORIGINATOR Lvis & Loc.
PROJECT NUMBER 1.18.18- SCC- HTB- ZZ- DR- A- 3101	ROLES No.



DO NOT SCALE FROM THIS DRAWING.
 ALL FIGURED DIMENSIONS ARE TO BE CHECKED ON SITE. ANY ERRORS OR OMISSIONS ARE TO BE IMMEDIATELY REPORTED TO SLIGO COUNTY COUNCIL LEAD ARCHITECT OR REPRESENTATIVE.
 ALL CONSTRUCTION PRACTICES ARE TO CONFORM WITH CURRENT BUILDING REGULATIONS.



Note Number	Note Text
1	Slate Roof
2	Flush Eaves
3	Aluminium Rainwater Goods
4	Painted smooth finish sand/cement render
5	Triple Glazed Upvc Windows
6	Corner Window
7	Grey Engineering Brick
8	Upvc Door and Sidelight
9	PV Panels
10	Powder coated aluminium faced cantilevered canopy
11	Roof Window
12	UPVC Soil vent Pipe & Cowel, Colour Black



Rev.No.	Comment	Date
CD1	Planning Complete for Issue	27/10/23

Code	Description
S0	WORK IN PROGRESS
S1	COORDINATION
S2	INFORMATION
S3	REVIEW COMMENT
S4	CONSTRUCTION APPROVAL
S5	REVIEW AND ACCEPTANCE
A0	STAGE 0 DELIVERABLES (URBAN DESIGN AND STRATEGIC)
A1	STAGE 1 DELIVERABLE (CAPACITY/FEASIBILITY)
A2	STAGE 2 DELIVERABLE (PLANNING PERMISSION)
A3	STAGE 3 DELIVERABLE (TECHNICAL DESIGN/TENDER)
A4	STAGE 4 DELIVERABLE (CONSTRUCTION)
A5	STAGE 5 DELIVERABLE (HANDOVER)
A6	STAGE 6 DELIVERABLE (HANDOVER)
A7	STAGE 7 DELIVERABLE (USE / POE, ETC.)
T1	TENDER STAGE 1 (MULTIPLE TENDERS)
T2	TENDER STAGE 2 (MULTIPLE TENDERS)
T3	TENDER STAGE 3 (MULTIPLE TENDERS)
CP	COMPLIANCE STATUTORY
AS	AS CONSTRUCTED RECORD DOCUMENT
DA	DISABILITY ACCESS CERT
FC	FIRE CERT



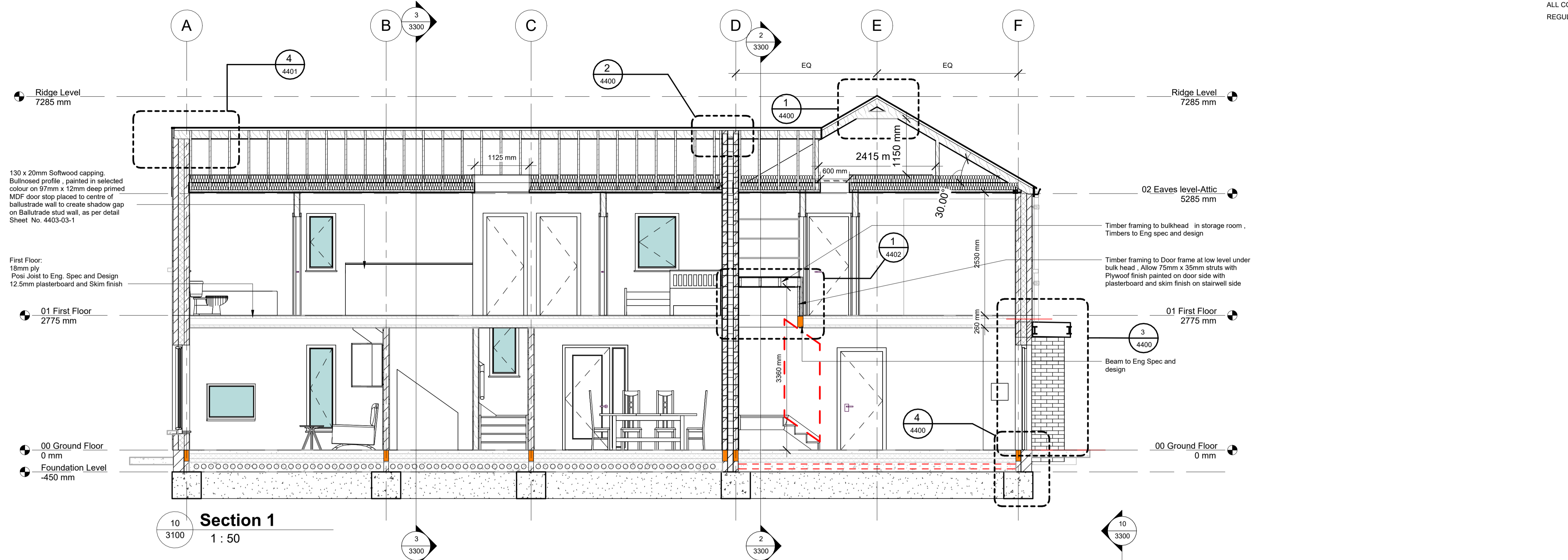
SLIGO COUNTY COUNCIL
 HOUSING CAPITAL TEAM

Purpose of Issue : **Planning**

Key Plan

Sligo County Council, County Hall, Riverside, Sligo. F91Y763	
PROJECT TITLE: Glenview Park Group Housing	PROJECT NO: 1.18.18
DRAWING NO: 3200	STATUS: A3
DRAWING TITLE: House Type B - Elevations	SCALE: 1:100
DRAWN BY: JS	REVISION: C01
CHECKED BY: MOC	Project Number: 1.18.18- SCC- HTB- ZZ- DR- A- 3200

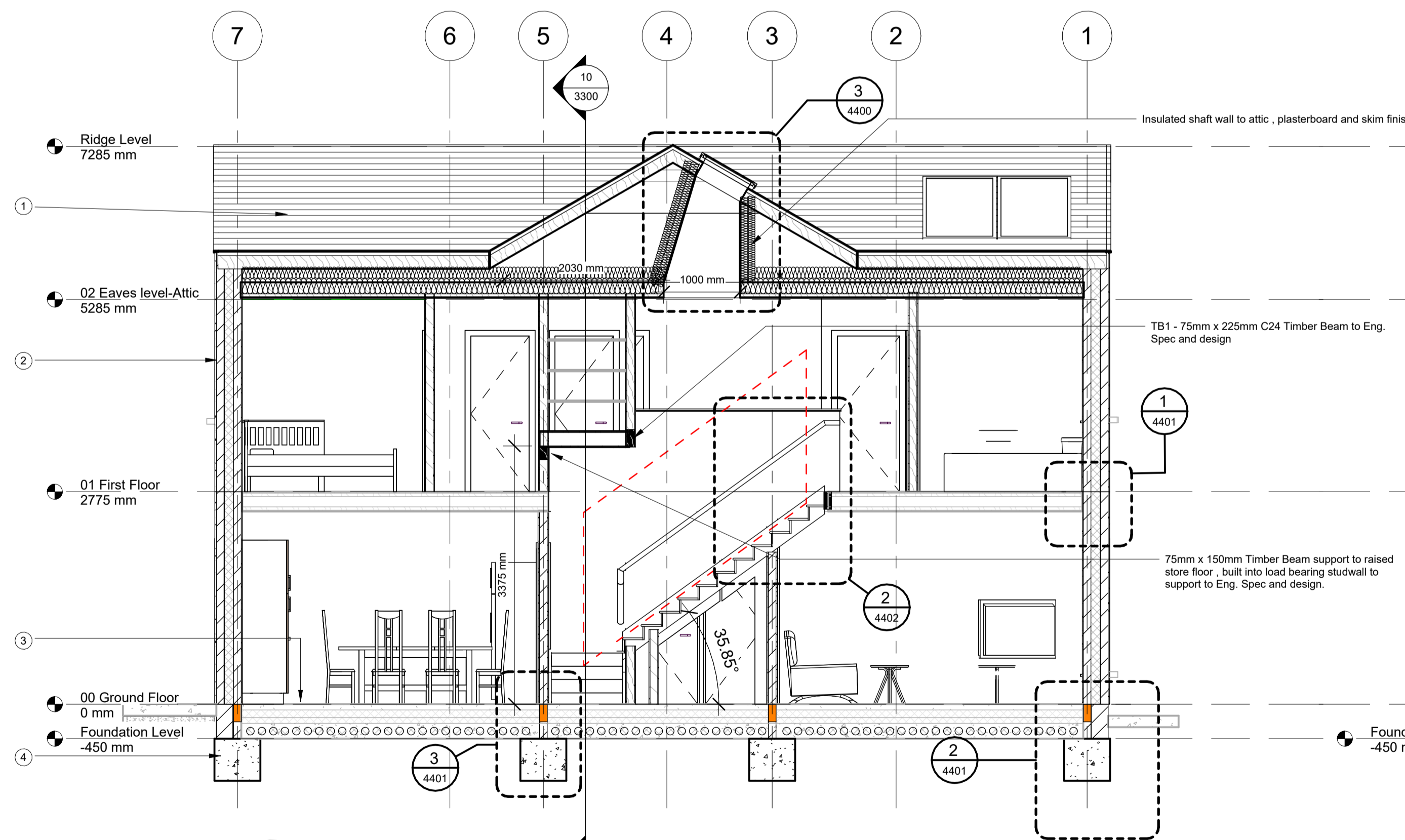
DO NOT SCALE FROM THIS DRAWING.
 ALL FIGURED DIMENSIONS ARE TO BE CHECKED ON SITE. ANY ERRORS OR OMISSIONS ARE TO BE IMMEDIATELY REPORTED TO SLIGO COUNTY COUNCIL LEAD ARCHITECT OR REPRESENTATIVE.
 ALL CONSTRUCTION PRACTICES ARE TO CONFORM WITH CURRENT BUILDING REGULATIONS.



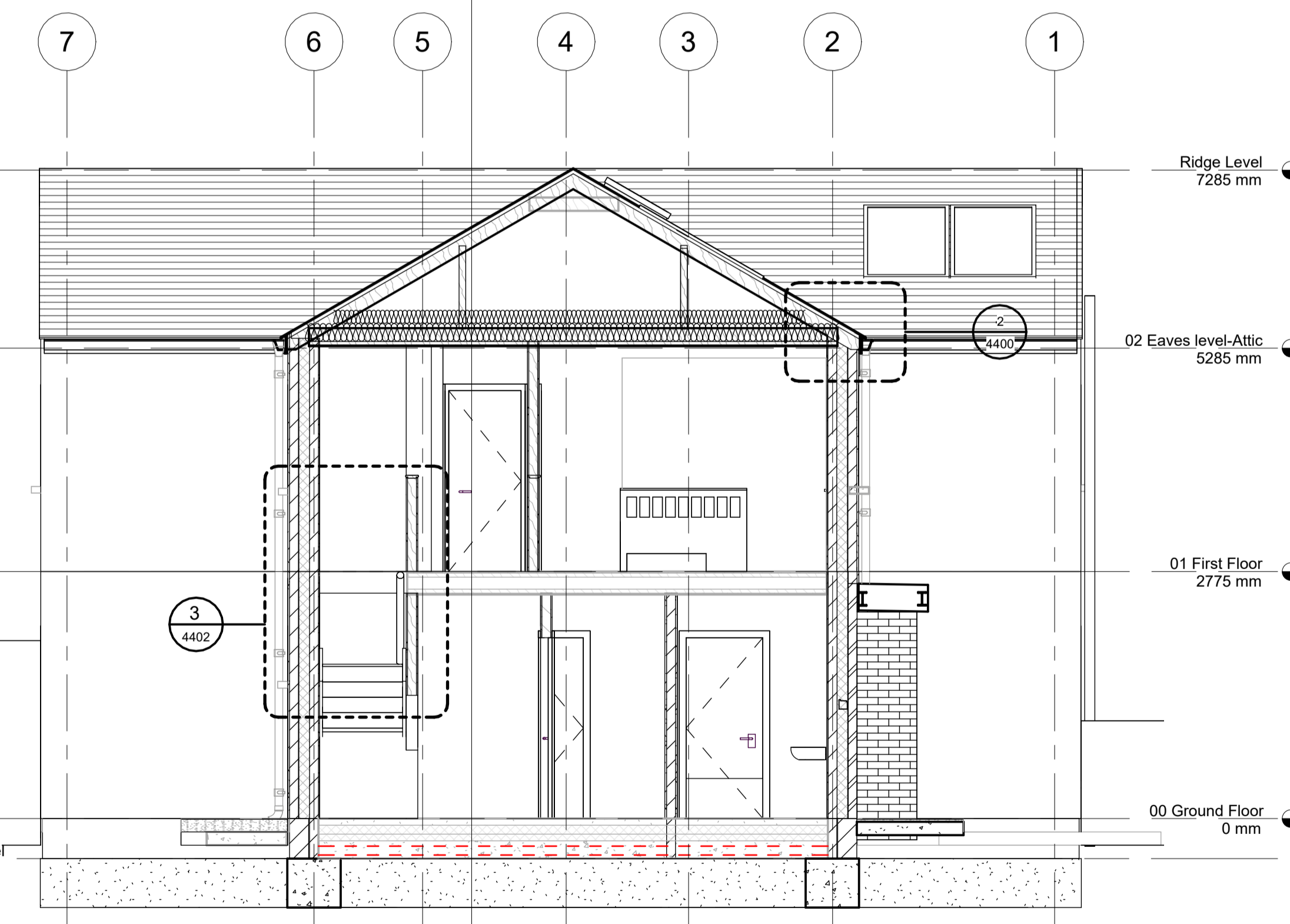
Section 1
1 : 50

Outline Specification		
Note Number	View type	Note description
1	Section	Roof Construction: Slate Finish Truss roof to manufacturers spec and design 350mm Insulation to give a U Value of 0.12
2	Section	External Wall Construction: 325mm Cavity Wall construction 100mm block inner leaf 125mm full fill CT/PIR 100mm block outer leaf plastered both sides U value 0.16
3	Section	Ground Floor Construction: 75mm Hemihydrate screed 500 gauge polythene 175mm PIR Insulation in two layers, 1 x 100 and 1 x 75mm Joints staggered Edge insulations to all rising walls 150mm Concrete Subfloor to Eng. spec and design Radon Barrier Sand Blinding Hardcore well compacted to Eng. spec and design U value 0.11
4	Section	Foundations: Foundations to Eng. spec and design, depths to be verified on site

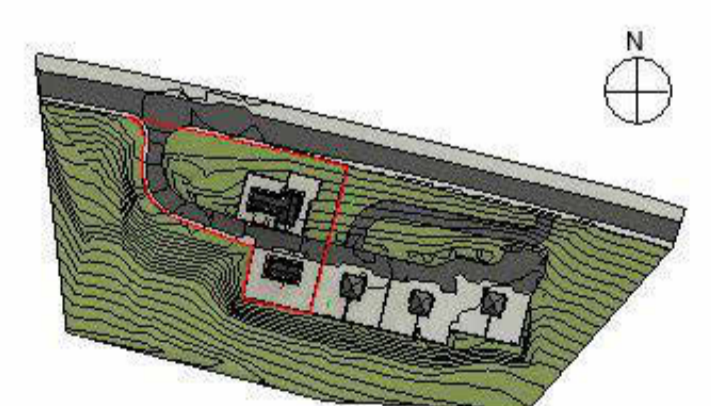
NOTE: Sudamit 280 alpha hemi hydrate screed required to Ground floor. 50mm thickness in house type A and 75mm thickness allowed for in house type B. Unit 1 and unit 2. This is due to upward deflection in hollowcore slab. This will maintain a min. of 50mm screed thickness over hollowcore units.



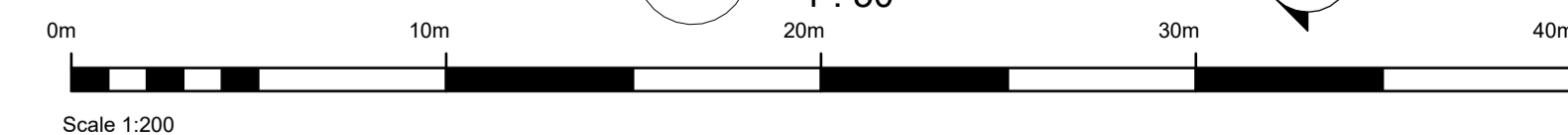
Section 2
1 : 50



Section 3
1 : 50



Key Plan



Rev.No.	Comment	Date
CD1	Planning Complete for Issue	27/10/23

Rev.No.	Comment	Date
CD1	Planning Complete for Issue	27/10/23



SLIGO COUNTY COUNCIL
HOUSING CAPITAL TEAM

Purpose of Issue : **Tender**

Sligo County Council, County Hall, Riverside, Sligo. F91Y763		PROJECT NO:	1.18.18	FIRST ISSUE DATE:	19/10/2022
Glenview Park Group Housing		DRAWING NO:	3300	STATUS:	A3
House Type B - Sections		SCALE:	1:100	REVISION:	C01
DRAWN BY:	JS	Originator- Project Number	1.18.18- SCC- HTB- ZZ- DR- A- 3300	Vol & Syst.	Role
CHECKED BY:	MOC	Lvs & Loc.- Type		No.	

