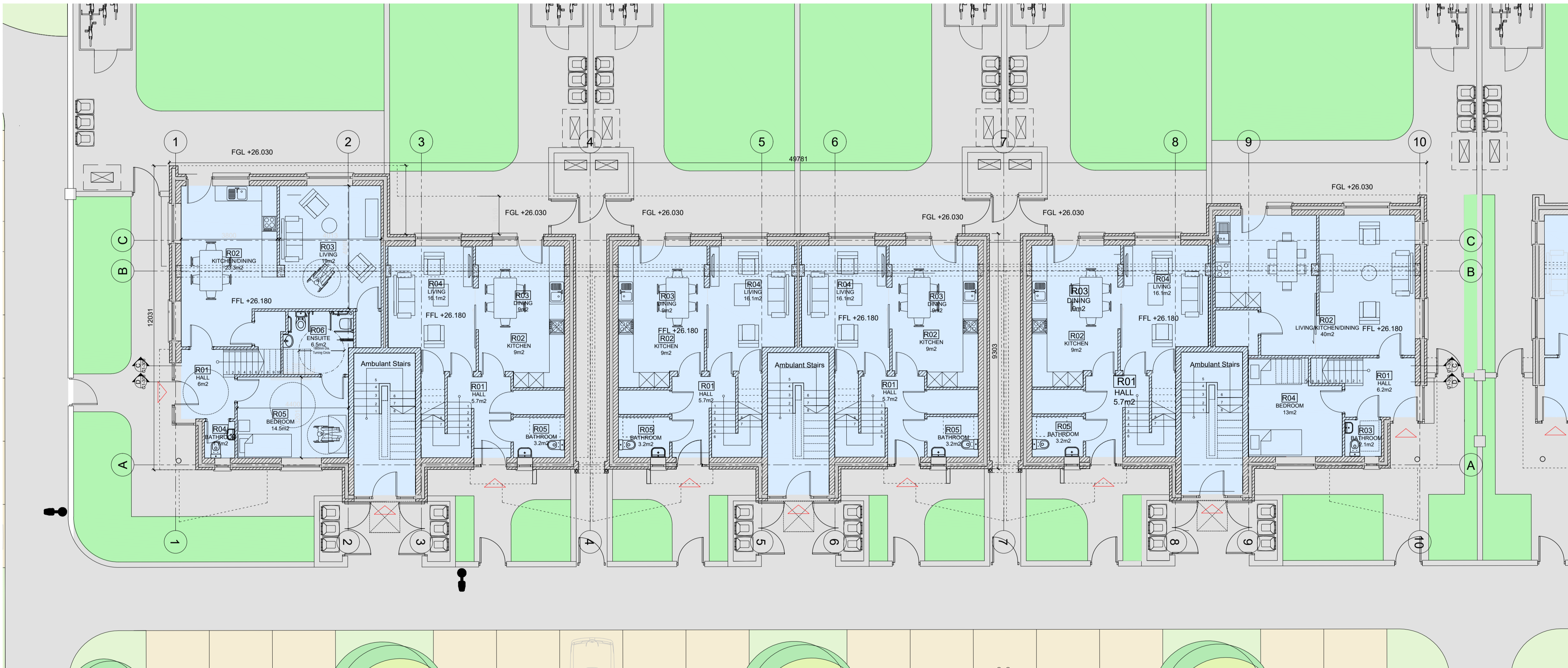
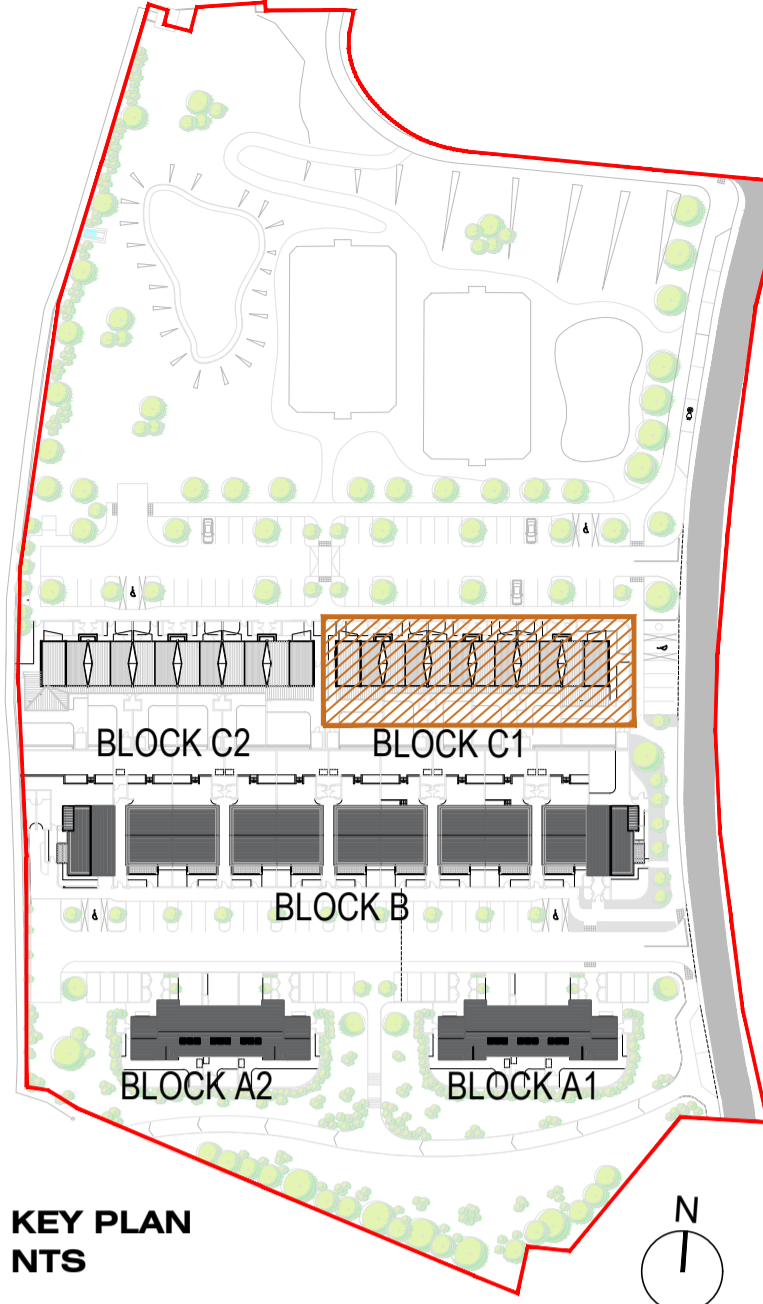


**FIRST FLOOR PLAN**  
1:100



**GROUND FLOOR PLAN**  
1:100

Block C1 - 4 Bed Duplex / 7 person (end - 2 storey) (Dual Aspect)			Block C1 - 4 Bed Duplex / 6 person (D/S end - 2 storey) (Dual Aspect)			Block C1 Mid Block Duplex - 3 Bed Duplex / 5 person (Dual Aspect)		
Ground Floor	MIN TARGET	ACTUAL	Ground Floor	MIN TARGET	ACTUAL	Ground Floor	MIN TARGET	ACTUAL
HALL		6.2	HALL		6	HALL		5.7
LIVING/KITCHEN/DINING		49	KITCHEN/DINING		29.9	KITCHEN		4
BATHROOM 1		2.1	LIVING ROOM		19	DINING ROOM		9
STORE	Min Width 2.8m / Actual 2.1	19	BATHROOM		1.9	LIVING ROOM		16.1
First Floor		2.5	BEDROOM 1		14.5*	BATHROOM		3.2
LANDING		6.1	DISABLED BATHROOM		6.5	STORE		1.5
BEDROOM 2	Min Width 3.1m / Actual 2.1	2.2	STORE		1.4	STORE		1.8
BEDROOM 3	Min Width 2.8m / Actual 2.8	19	First Floor		3.4	LANDING		2.8
BATHROOM	Min Width 2.8m / Actual 2.8	4.1	LANDING		6.1	BEDROOM 1		13.4
STORE		1.4	BEDROOM 2	Min Width 2.8m / Actual 2.1	2.2	BEDROOM 2	Min Width 2.8m / Actual 2.8m	11.6
STORE		1.4	BEDROOM 3	Min Width 2.8m / Actual 2.8	19	BEDROOM 3	Min Width 2.8m / Actual 2.8m	7.9
STORE		1.4	BEDROOM 4	Min Width 2.8m / Actual 2.8	13.4	BATHROOM		4.5
STORE		1.4	BATHROOM		4.2	STORE		0.6
STORE		1.4	STORE		0.5	STORE		1.1
STORE		1.4	STORE		0.5			
STORE		0.7	STORE		0.7			
STORE		3						
<b>Quality Housing for Sustainable Communities Standards</b>			<b>Quality Housing for Sustainable Communities Standards</b>			<b>Quality Housing for Sustainable Communities Standards</b>		
Aggregate Living Area	40	40	Aggregate Living Area	34	34.1	Aggregate Living Area	34	34.1
Aggregate Bedroom Area	46	46.2	Aggregate Bedroom Area	32	32.9	Aggregate Bedroom Area	32	32.9
Storage	6	6.7	Storage	6	6.3	Storage	6	6.3
Aggregate Floor Area	110	115.4	Aggregate Floor Area	92	96.7	Aggregate Floor Area	92	96.7
Private Amenity Space	9	10.6	Private Amenity Space	9	9.9	Private Amenity Space	9	9.9

**PART 8 PLANNING SUBMISSION**

DO NOT SCALE FROM THIS DRAWING.  
ALL FIGURED DIMENSIONS ARE TO BE CHECKED ON SITE. ANY ERRORS OR OMISSIONS ARE TO BE IMMEDIATELY REPORTED TO THE SLIGO BOROUGH COUNCIL ARCHITECT OR REPRESENTATIVE.  
ALL CONSTRUCTION PRACTICES ARE TO CONFORM WITH CURRENT BUILDING REGULATIONS.

S	/	/	/	/
R	/	/	/	/
Q	/	/	/	/
P	/	/	/	/
O	/	/	/	/
N	/	/	/	/
M	/	/	/	/
L	/	/	/	/
K	/	/	/	/
REV:	DATE:	BY:	CHK:	

J	/	/	/	/
H	/	/	/	/
G	/	/	/	/
F	/	/	/	/
E	/	/	/	/
D	/	/	/	/
C	/	/	/	/
B	/	/	/	/
A	/	/	/	/
REV:	DATE:	BY:	CHK:	

**SLIGO COUNTY COUNCIL**  
Architects Department

County Hall Riverside Sligo  
Tel:(071)911111 Fax:(071)9141119  
Email: architecture@sligooco.ie

PROJECT NO: **1.10.27** DATE: **AUG 2021**

PROJECT: **ROBBERS LANE, MAUGHERABOY**

DRAWING NAME: **Block C1** REVISION: **P8- C1-100**

SCALE: **AS SHOWN** STATUS: **PART 8**

REF / FILE: **FN** DRAWN BY: **FN** CHECKED BY: