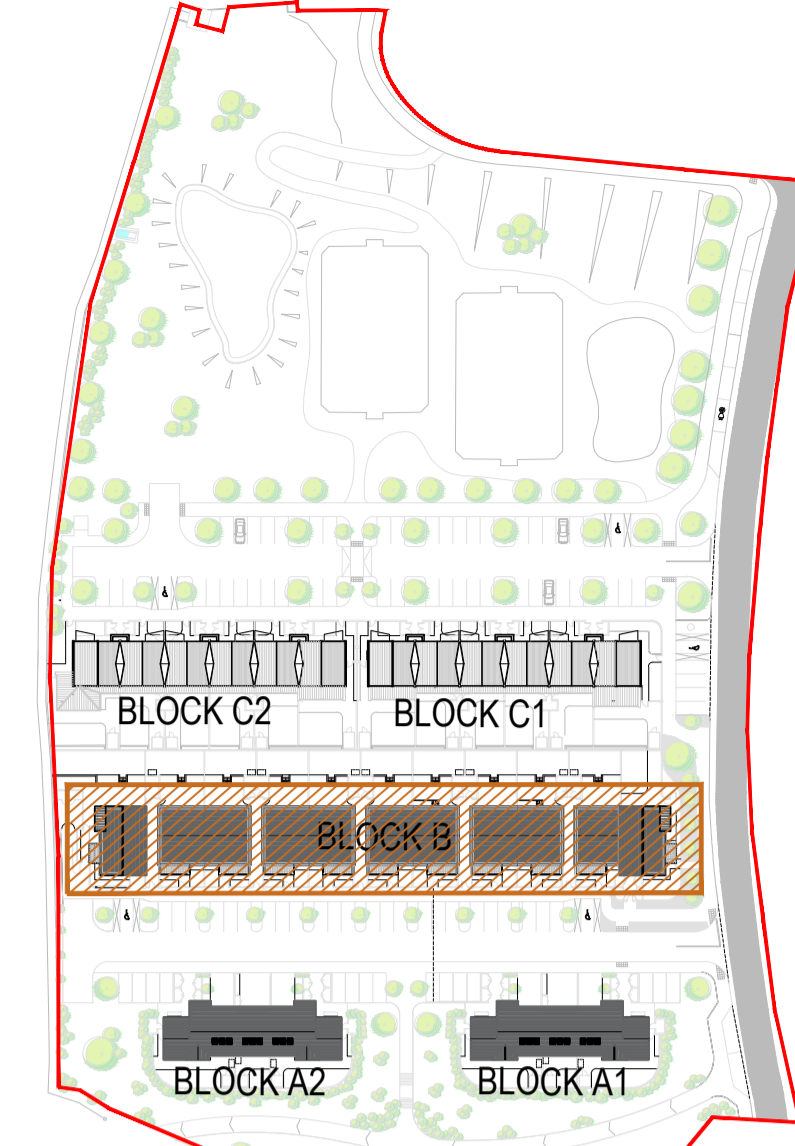


REMAINING PART OF PLAN  
**SECOND FLOOR PART PLAN**  
 1:100

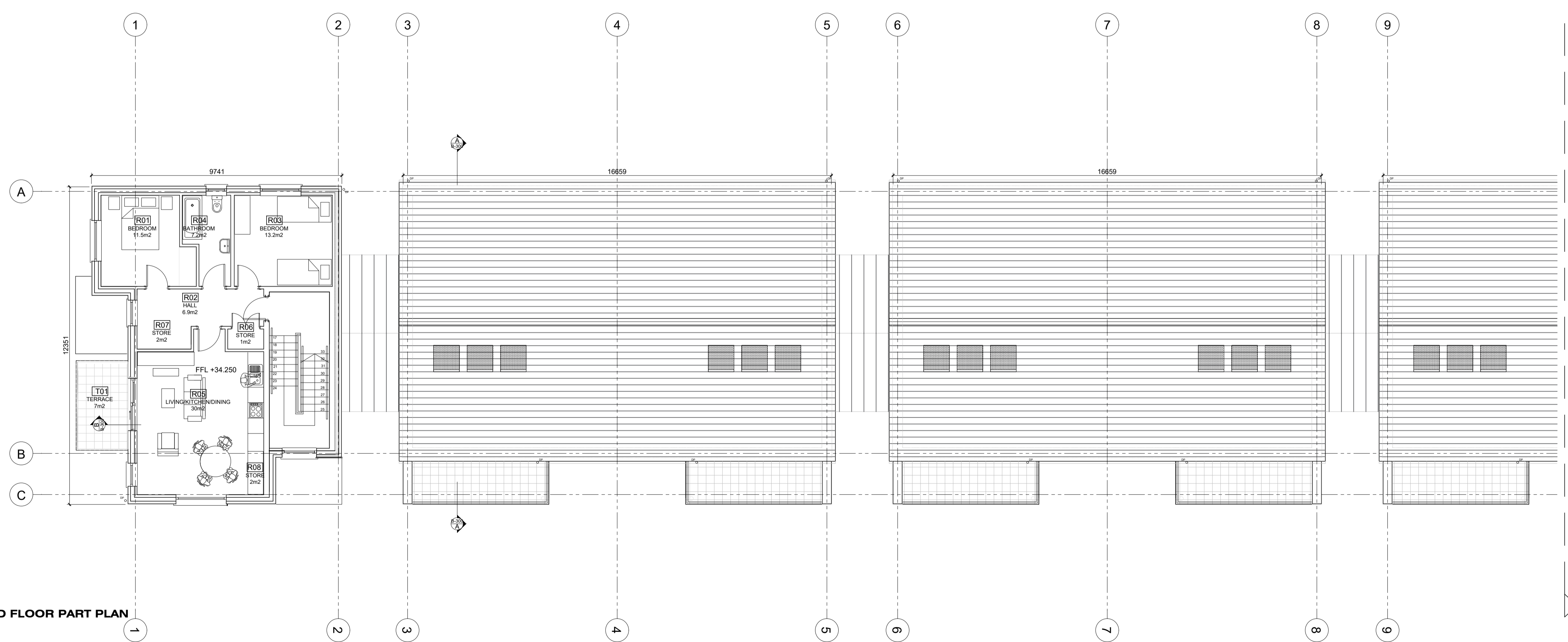


**KEY PLAN**  
 NTS

Block B - 2 Bed Apartment / 4 person (End Unit) (Dual Aspect)		
Second Floor		
HALL	Min Width 1.5m / Actual 1.5m	6.9
LIVING/DINING/KITCHEN	Min Width 2.0m / Actual 2.0m	30
BATHROOM	Min Width 2.0m / Actual 2.0m	7.2
BEDROOM 1	Min Width 2.0m / Actual 2.0m	11.5
BEDROOM 2	Min Width 2.0m / Actual 2.0m	13.2
TERRACE		7

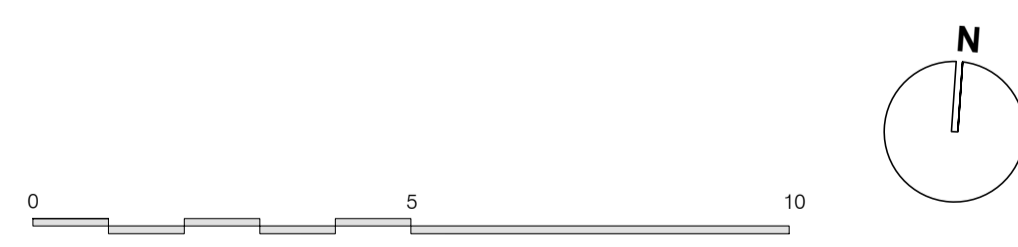
  

Design Standards for New Apartments 2018		
	MIN TARGET	ACTUAL
Aggregate Living/Dining/Kitchen Area	30	30
Aggregate Bedroom Area	11.4 + 13 = 24.4	24.7
Storage	4	6
Aggregate Floor Area	71	76.4
Private Amenity Space	7	7



**SECOND FLOOR PART PLAN**  
 1:100

PARTIAL PLAN -  
 SEE ABOVE



DO NOT SCALE FROM THIS DRAWING.  
 ALL FIGURED DIMENSIONS ARE TO BE CHECKED ON SITE. ANY ERRORS OR OMISSIONS ARE TO BE IMMEDIATELY REPORTED TO THE SLIGO BOROUGH COUNCIL ARCHITECT OR REPRESENTATIVE.  
 ALL CONSTRUCTION PRACTICES ARE TO CONFORM WITH CURRENT BUILDING REGULATIONS.

S	/	/	/								
R	/	/	/								
Q	/	/	/								
P	/	/	/								
O	/	/	/								
N	/	/	/								
M	/	/	/								
L	/	/	/								
K	/	/	/								
REV:	DATE:	BY:	CHK:								

J	/	/	/								
H	/	/	/								
G	/	/	/								
F	/	/	/								
E	/	/	/								
D	/	/	/								
C	/	/	/								
B	/	/	/								
A	/	/	/								
REV:	DATE:	BY:	CHK:								

**PART 8 PLANNING SUBMISSION**

**SLIGO COUNTY COUNCIL**  
 Architects Department

County Hall    Riverside    Sligo  
 Tel: (071) 911111    Fax: (071) 9141119  
 Email: [architecture@sligococo.ie](mailto:architecture@sligococo.ie)

PROJECT: ROBBERS LANE, MAUGHERABOY	PROJECT NO: 1.10.27	DATE: AUG 2021
DRAWING NAME: Block B Second Floor Plan	DRAWING NO: P8-B-102	REVISION:
SCALE: AS SHOWN	STATUS: PART 8	
REF / FILE	DRAWN BY: SMT	CHECKED BY: