

Block A2 - 2 Bed Apartment / 4 person (Dual Aspect)		
Room	Area (m ²)	Percentage
Ground Floor		
HALL	8.3	13.1
LIVING/KITCHEN/DINING	31.3	49.8
BATHROOM	4	6.4
BEDROOM 1	13	20.5
BEDROOM 2	13.4	21.0
STORE	6.4	10.1
TOTAL	76.4	100.0

Sustainable Urban Housing - Design Standards for New Apartments		
Aggregate	MIN TARGET	ACTUAL
Living/Dining/Kitchen Area	30	31.3
Aggregate Bedroom Area	11.4 + 13 = 24.4	26.4
Storage	6	6.4
Aggregate Floor Area	73	76.4
Private Amenity Space	7	0

Block A2 - 2 Bed Apartment / 4 person (Dual Aspect)		
Room	Area (m ²)	Percentage
First Floor		
HALL	8.3	13.1
LIVING/KITCHEN/DINING	31.3	49.8
BATHROOM	4	6.4
BEDROOM 1	13	20.5
BEDROOM 2	13.4	21.0
STORE	6.4	10.1
TOTAL	76.4	100.0

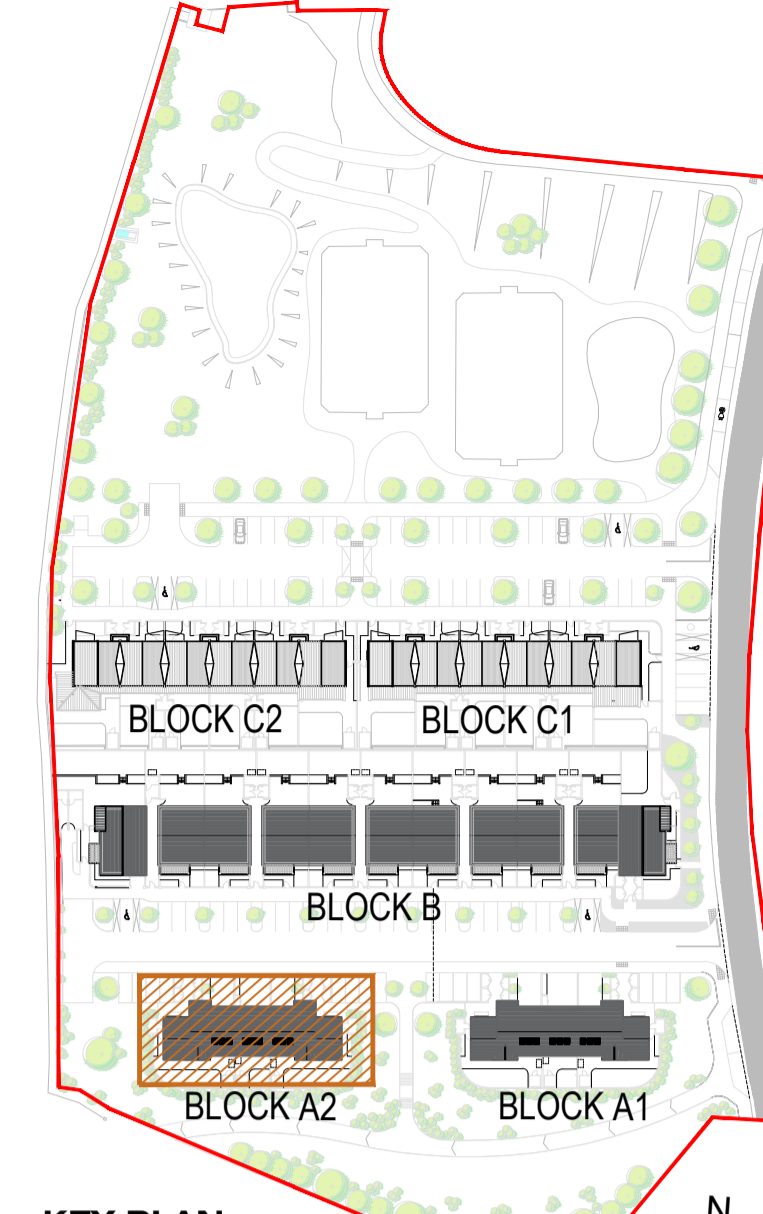
Sustainable Urban Housing - Design Standards for New Apartments		
Aggregate	MIN TARGET	ACTUAL
Living/Dining/Kitchen Area	30	31.3
Aggregate Bedroom Area	11.4 + 13 = 24.4	26.4
Storage	6	6.4
Aggregate Floor Area	73	76.4
Private Amenity Space	7	0

Second Floor		
Room	Area (m ²)	Percentage
Ground Floor		
HALL	8.3	13.1
LIVING/KITCHEN/DINING	31.3	49.8
BATHROOM	4	6.4
BEDROOM 1	13	20.5
BEDROOM 2	13.4	21.0
STORE	6.4	10.1
TOTAL	76.4	100.0

Sustainable Urban Housing - Design Standards for New Apartments		
Aggregate	MIN TARGET	ACTUAL
Living/Dining/Kitchen Area	30	31.3
Aggregate Bedroom Area	11.4 + 13 = 24.4	26.4
Storage	6	6.4
Aggregate Floor Area	73	76.4
Private Amenity Space	7	0

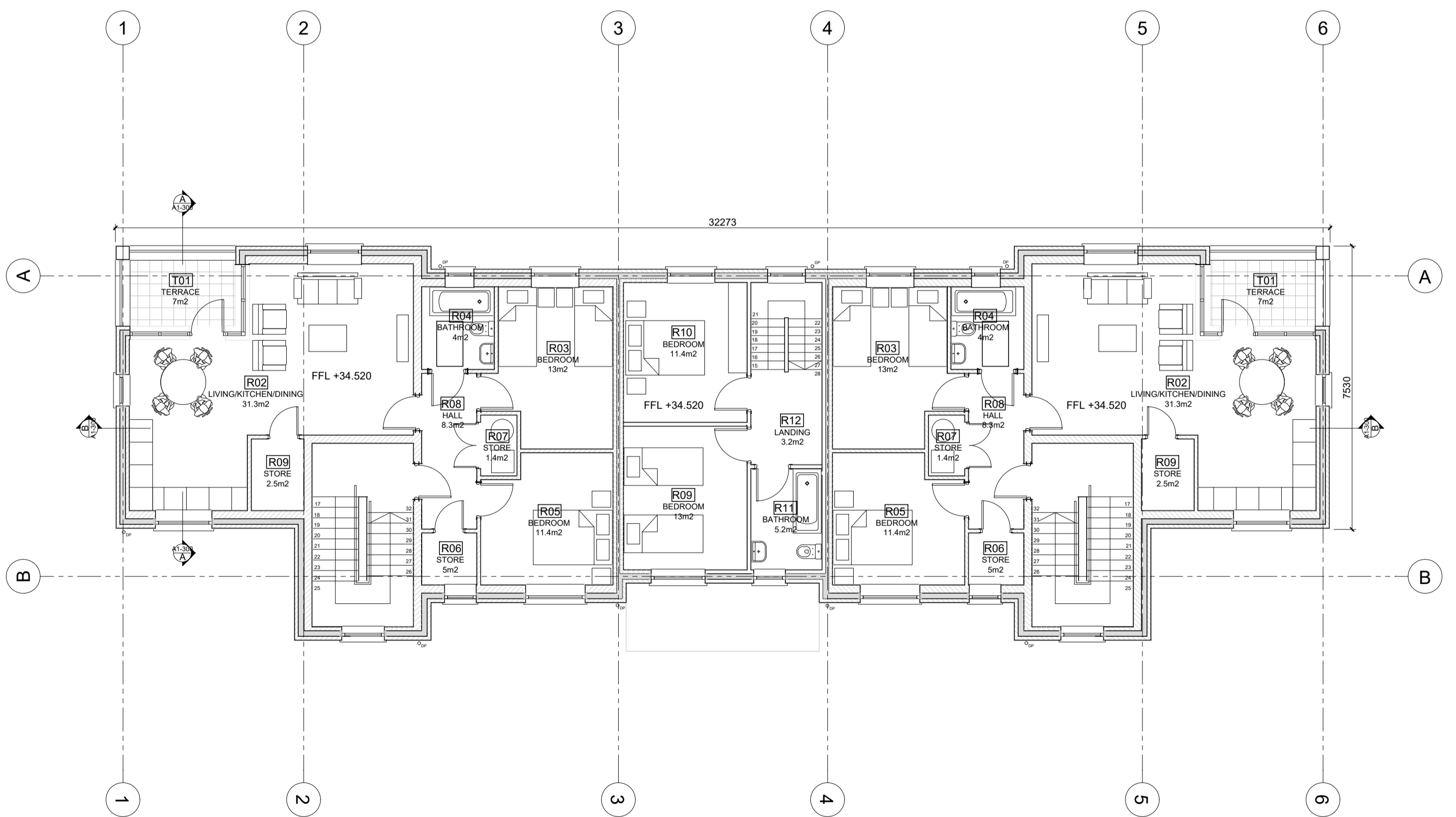
Block A2 - 3 Bed House / 6 person (3 Storey) as per Department House Type - Dwelling (Dual Aspect)		
Room	Area (m ²)	Percentage
Ground Floor	7.2	11.0
HALL	22.2	33.3
KITCHEN	2.5	3.7
DINING ROOM	4.2	6.3
WC	2.5	3.7
STORE	4.2	6.3
First Floor		
LANDING	2.5	3.7
LIVING ROOM	13.8	20.7
BEDROOM 1	13	19.4
STORE	1.9	2.8
Second Floor		
LANDING	3.2	4.8
BATHROOM	15.8	23.7
BEDROOM 2	11.4	17.1
BEDROOM 3	13	19.4
STORE	0.3	0.4

Quality Housing for Sustainable Communities Standards		
Aggregate	MIN TARGET	ACTUAL
Aggregate Living Area	37	39
Aggregate Bedroom Area	36	36.4
Storage	6	6.4
Aggregate Floor Area	100	108.5



**KEY PLAN
NTS**

**ROOF PLAN
1:100**

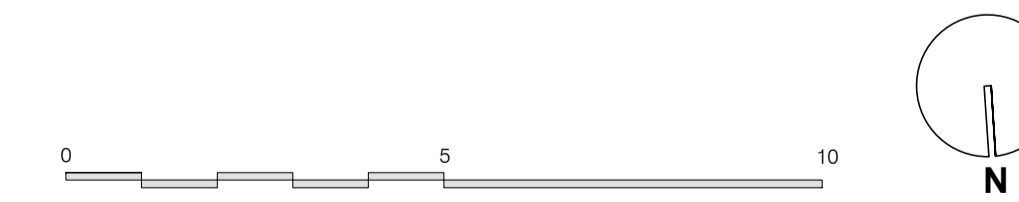


**SECOND FLOOR PLAN
1:100**

DO NOT SCALE FROM THIS DRAWING.
ALL FIGURED DIMENSIONS ARE TO BE CHECKED ON SITE. ANY ERRORS OR OMISSIONS ARE TO BE IMMEDIATELY REPORTED TO THE SLIGO BOROUGH COUNCIL ARCHITECT OR REPRESENTATIVE.
ALL CONSTRUCTION PRACTICES ARE TO CONFORM WITH CURRENT BUILDING REGULATIONS.

S	/										
R	/										
Q	/										
P	/										
O	/										
N	/										
M	/										
L	/										
K	/										
J	/										
I	/										
H	/										
G	/										
F	/										
E	/										
D	/										
C	/										
B	/										
A	/										

J	/										
H	/										
G	/										
F	/										
E	/										
D	/										
C	/										
B	/										
A	/										



PART 8 PLANNING SUBMISSION

SLIGO COUNTY COUNCIL Architects Department		County Hall Riverside Sligo Tel: (071) 9141111 Fax: (071) 9141119 Email: architecture@sligooco.ie
PROJECT: ROBBERS LANE, MAUGHERABOY	PROJECT NO: 1.10.27	DATE: AUG 2021
DRAWING NAME: Block A2 Second floor and Roof Plan	DRAWING NO: P8-A2-101	REVISION:
SCALE: AS SHOWN	STATUS: PART 8	
REF / FILE	DRAWN BY: SMT	CHECKED BY: