

Block A2 - 2 Bed Apartment / 4 person (Dual Aspect)		
Ground Floor		
HALL		8.3
LIVING/KITCHEN/DINING	Min width 3.6m / Actual 4.3m	31.3
BATHROOM		4
BEDROOM 1	Min width 2.8m / Actual 3m	13
BEDROOM 2	Min width 2.8m / Actual 2.8m	11.4
STORE		6.4
TOTAL		74.4

Sustainable Urban Housing - Design Standards for New Apartments		
Aggregate		
Living/Dining/Kitchen Area	30	31.3
Aggregate Bedroom Area	11.4 + 13 = 24.4	11.4 + 13 = 24.4
Storage	6	6.4
Aggregate Floor Area	73	74.4
Private Amenity Space	7	6.4

Block A2 - 2 Bed Apartment / 4 person (Dual Aspect)		
First Floor		
HALL		8.3
LIVING/KITCHEN/DINING	Min width 3.6m / Actual 4.3m	31.3
BATHROOM		4
BEDROOM 1	Min width 2.8m / Actual 3m	13
BEDROOM 2	Min width 2.8m / Actual 2.8m	11.4
STORE		6.4
TOTAL		74.4

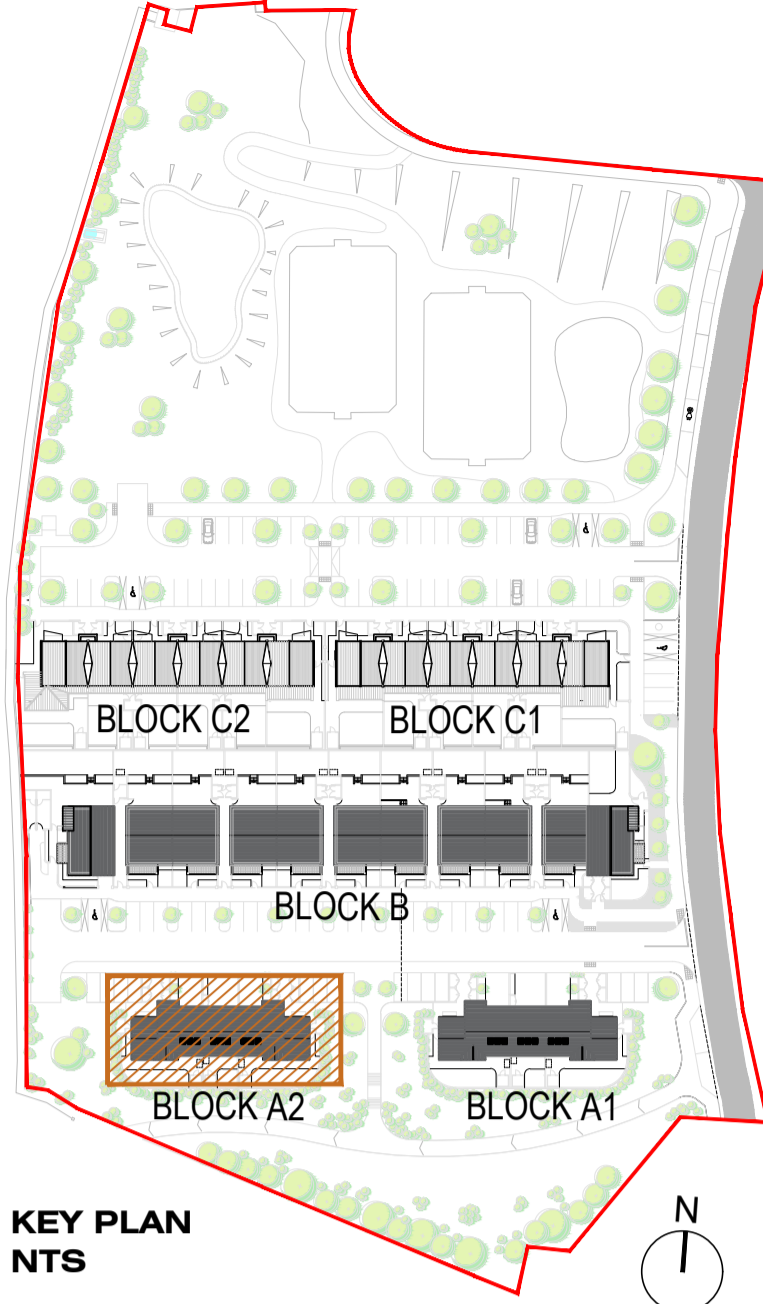
Sustainable Urban Housing - Design Standards for New Apartments		
Aggregate		
Living/Dining/Kitchen Area	30	31.3
Aggregate Bedroom Area	11.4 + 13 = 24.4	11.4 + 13 = 24.4
Storage	6	6.4
Aggregate Floor Area	73	74.4
Private Amenity Space	7	6.4

Second Floor		
HALL		8.3
LIVING/KITCHEN/DINING	Min width 3.6m / Actual 4.3m	31.3
BATHROOM		4
BEDROOM 1	Min width 2.8m / Actual 3m	13
BEDROOM 2	Min width 2.8m / Actual 2.8m	11.4
STORE		6.4
TOTAL		74.4

Sustainable Urban Housing - Design Standards for New Apartments		
Aggregate		
Living/Dining/Kitchen Area	30	31.3
Aggregate Bedroom Area	11.4 + 13 = 24.4	11.4 + 13 = 24.4
Storage	6	6.4
Aggregate Floor Area	73	74.4
Private Amenity Space	7	6.4

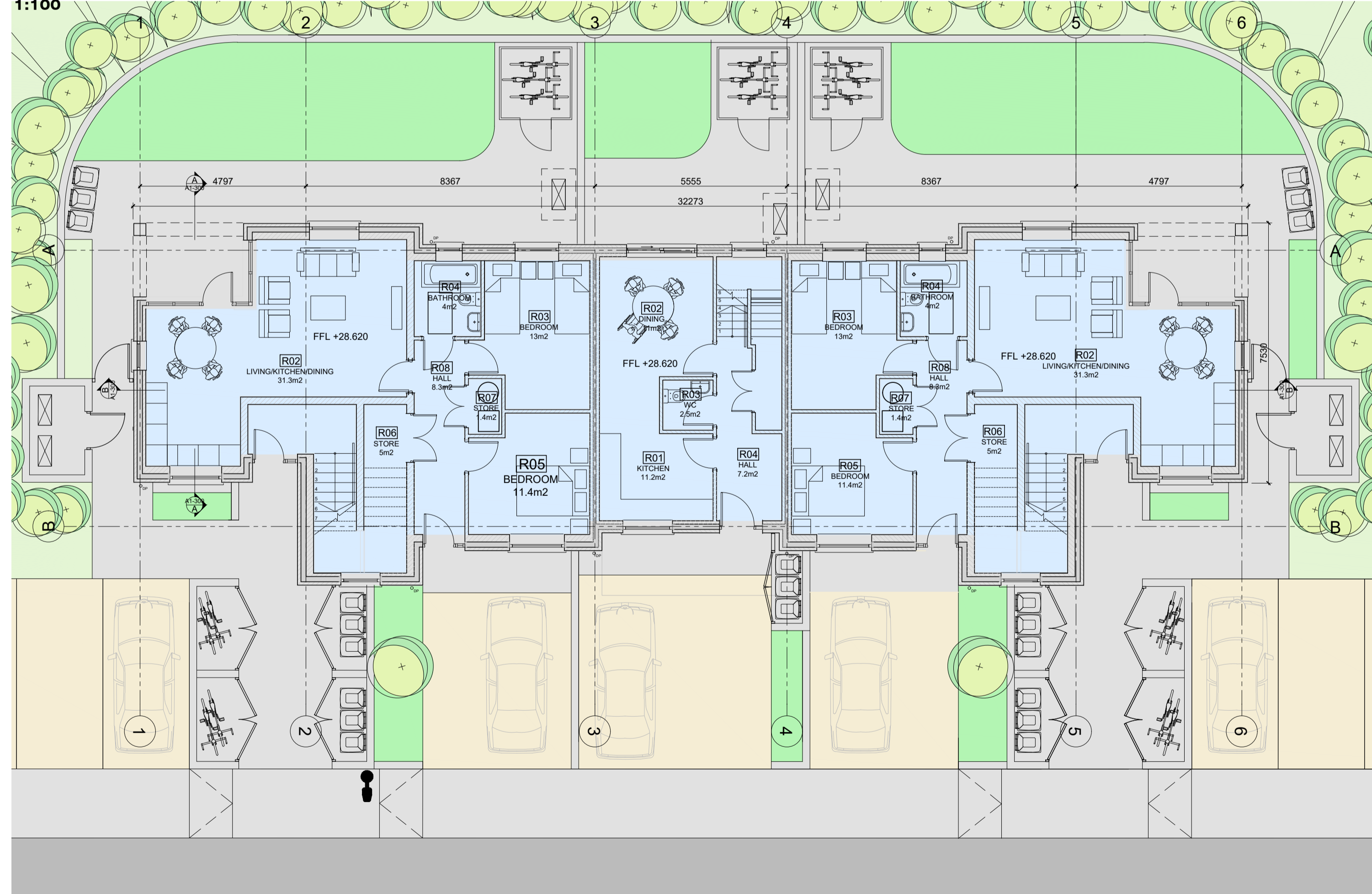
Block A2 - 3 Bed House / 6 person (3 Storey) as per Department House Type - Dwelling (3) (Dual Aspect)		
Ground Floor		
HALL		7.2
KITCHEN		22.2
DINING ROOM		2.5
WC		4.2
STORE		2.5
First Floor		
LANDING		2.5
LIVING ROOM	Min width 3.6m / Actual 3.6m	37.8
BEDROOM 1	Min width 2.8m / Actual 2.24	13
STORE		1.9
Second Floor		
LANDING		3.2
BATHROOM		5.2
BEDROOM 2	Min width 2.8m / Actual 2.24	11.4
BEDROOM 3	Min width 2.8m / Actual 2.24	13
STORE		0.3

Quality Housing for Sustainable Communities Standards		
Aggregate Living Area	MIN TARGET	ACTUAL
Aggregate Bedroom Area	37	36
Storage	36	36.4
Aggregate Floor Area	6	6.4
Aggregate Floor Area	193	188.5



KEY PLAN NTS

FIRST FLOOR PLAN 1:100



GROUND FLOOR PLAN 1:100

DO NOT SCALE FROM THIS DRAWING.
 ALL FIGURED DIMENSIONS ARE TO BE CHECKED ON SITE. ANY ERRORS OR OMISSIONS ARE TO BE IMMEDIATELY REPORTED TO THE SLIGO BOROUGH COUNCIL ARCHITECT OR REPRESENTATIVE.
 ALL CONSTRUCTION PRACTICES ARE TO CONFORM WITH CURRENT BUILDING REGULATIONS.

S	/				
R	/				
Q	/				
P	/				
O	/				
N	/				
M	/				
L	/				
K	/				
REV:	DATE:	BY:	CHK:		

J	/				
H	/				
G	/				
F	/				
E	/				
D	/				
C	/				
B	/				
A	/				
REV:	DATE:	BY:	CHK:		

SLIGO COUNTY COUNCIL
 Architects Department

County Hall Riverside Sligo
 Tel: (071) 911111 Fax: (071) 9141119
 Email: architecture@sligococo.ie

PROJECT: **ROBBERS LANE, MAUGHERABOY**

PROJECT NO: **1.10.27** DATE: **AUG 2021**

DRAWING NAME: **Block A2**

DRAWING NO: **P8-A2-100** REVISION:

SCALE: **AS SHOWN** STATUS: **PART 8**

DRAWN BY: **SMT** CHECKED BY:

