

FIRST FLOOR PLAN
1:100

Block A1 - 2 Bed Apartment / 4 person (Dual Aspect)		
Room	MIN TARGET	ACTUAL
HALL		8.3
LIVING/KITCHEN/DINING	Min width 3.0m / Actual 4.3m	31.3
BATHROOM		4
BEDROOM 1	Min width 2.8m / Actual 2m	13
BEDROOM 2	Min width 2.8m / Actual 2.8m	11.4
STORE		6.2
TOTAL		74.4

Sustainable Urban Housing - Design Standards for New Apartments		
Aggregate	MIN TARGET	ACTUAL
Living/Dining/Kitchen Area	30	31.3
Aggregate Bedroom Area	11.4 + 13 = 24.4	13.4 + 13 = 26.4
Storage	6	6.4
Aggregate Floor Area	73	74.4
Private Amenity Space	7	8

Block A1 - 2 Bed Apartment / 4 person (Dual Aspect)		
Room	MIN TARGET	ACTUAL
HALL		8.3
LIVING/KITCHEN/DINING	Min width 3.0m / Actual 4.3m	31.3
BATHROOM		4
BEDROOM 1	Min width 2.8m / Actual 2m	13
BEDROOM 2	Min width 2.8m / Actual 2.8m	11.4
STORE		6.2
TOTAL		74.4

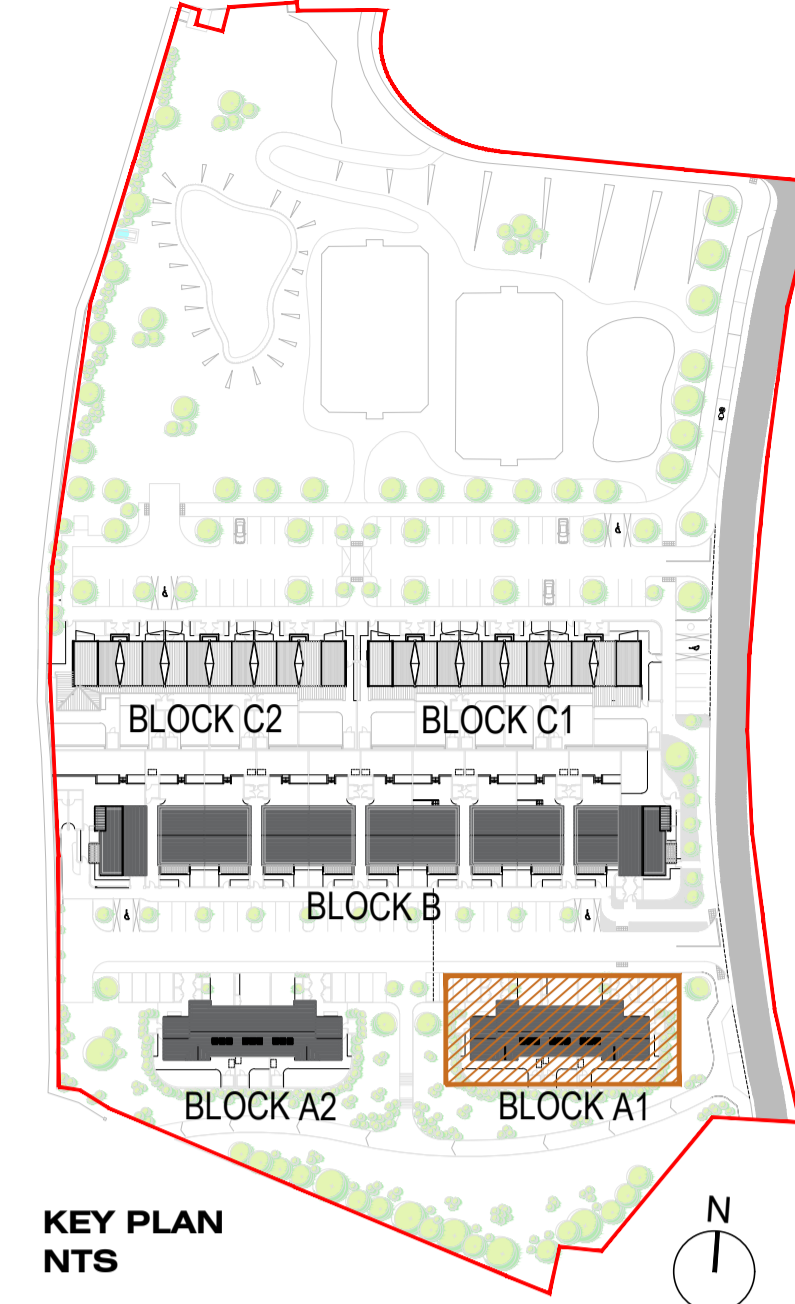
Sustainable Urban Housing - Design Standards for New Apartments		
Aggregate	MIN TARGET	ACTUAL
Living/Dining/Kitchen Area	30	31.3
Aggregate Bedroom Area	11.4 + 13 = 24.4	13.4 + 13 = 26.4
Storage	6	6.4
Aggregate Floor Area	73	74.4
Private Amenity Space	7	7

Second Floor		
Room	MIN TARGET	ACTUAL
HALL		8.3
LIVING/KITCHEN/DINING	Min width 3.0m / Actual 4.3m	31.3
BATHROOM		4
BEDROOM 1	Min width 2.8m / Actual 2m	13
BEDROOM 2	Min width 2.8m / Actual 2.8m	11.4
STORE		6.4
TOTAL		74.4

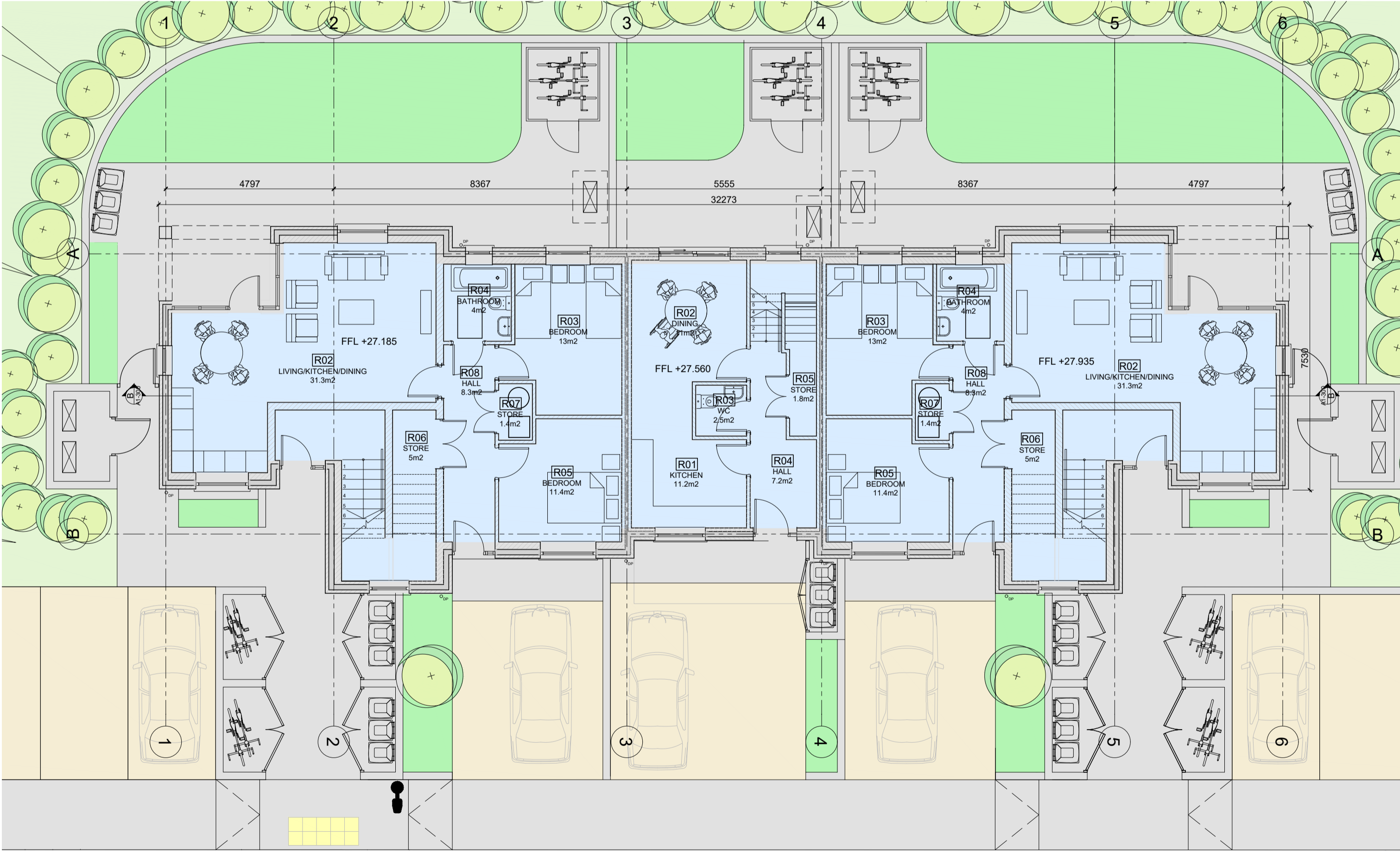
Sustainable Urban Housing - Design Standards for New Apartments		
Aggregate	MIN TARGET	ACTUAL
Living/Dining/Kitchen Area	30	31.3
Aggregate Bedroom Area	11.4 + 13 = 24.4	13.4 + 13 = 24.4
Storage	6	6.4
Aggregate Floor Area	73	74.4
Private Amenity Space	7	7

Block A1 - 3 Bed House / 6 person (3 Storey) as per Department House Type - Dwelling H3 (Dual Aspect)		
Room	MIN TARGET	ACTUAL
KITCHEN		7.2
DINING ROOM		22.2
LIVING ROOM		21.5
WC		4.1
STORE		4.1
First Floor		57.8
LIVING ROOM		37.8
BEDROOM 1	Min width 3.0m / Actual 3.0m	17.8
BEDROOM 2	Min width 3.0m / Actual 3.0m	17
STORE		11.9
Second Floor		11
LIVING ROOM		3.2
BATHROOM		5.2
BEDROOM 2	Min width 2.8m / Actual 2.8m	13.4
BEDROOM 3	Min width 2.8m / Actual 2.8m	13
STORE		6.3
TOTAL		63

Quality Housing for Sustainable Communities Standards		
Aggregate	MIN TARGET	ACTUAL
Aggregate Living Area	30	31.3
Aggregate Bedroom Area	11.4 + 13 = 24.4	36
Storage	6	6.4
Aggregate Floor Area	110	118.3



KEY PLAN
NTS



GROUND FLOOR PLAN
1:100

DO NOT SCALE FROM THIS DRAWING.
ALL FIGURED DIMENSIONS ARE TO BE CHECKED ON SITE. ANY ERRORS OR OMISSIONS ARE TO BE IMMEDIATELY REPORTED TO THE SLIGO BOROUGH COUNCIL ARCHITECT OR REPRESENTATIVE.
ALL CONSTRUCTION PRACTICES ARE TO CONFORM WITH CURRENT BUILDING REGULATIONS.

S	/				
Q	/				
R	/				
P	/				
O	/				
N	/				
M	/				
L	/				
K	/				
REV:	DATE:	BY:	CHK:		

J	/				
H	/				
G	/				
F	/				
E	/				
D	/				
C	/				
B	/				
A	/				
REV:	DATE:	BY:	CHK:		

PART 8 PLANNING SUBMISSION

SLIGO COUNTY COUNCIL
Architects Department

County Hall Riverside Sligo
Tel: (071) 911111 Fax: (071) 9141119
Email: architecture@sligococo.ie

PROJECT: **ROBBERS LANE, MAUGHERABOY**

PROJECT NO: **1.10.27** DATE: **AUG 2021**

DRAWING NAME: **Block A1**

DRAWING NO: **P8-A1-100** REVISION:

SCALE: **AS SHOWN** STATUS: **PART 8**

DRAWN BY: **SMT** CHECKED BY:

REF / FILE