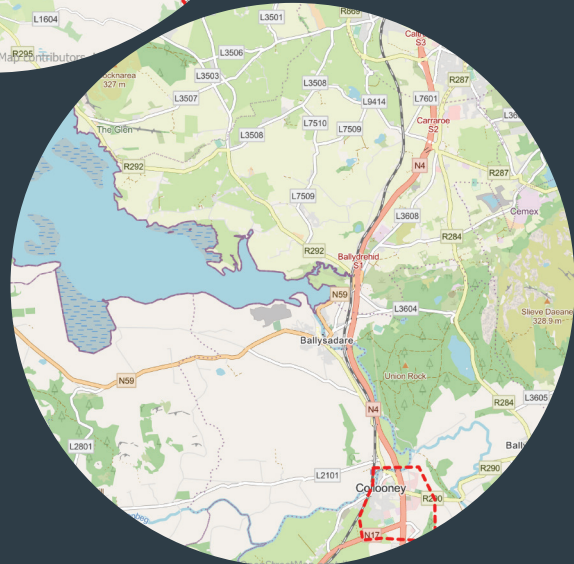


N4 Active Travel Collooney to Toberbride Scheme & N4 Active Travel Collooney to Castlebaldwin Scheme



Public Consultation No. 1
25th September - 23rd October 2023



This page has been left blank for printing purposes.

Project Background

Sligo County Council, through the Sligo Regional Design Office, are in the early stages of planning for the N4 Active Travel Collooney to Toberbride Scheme, and the N4 Active Travel Collooney to Castlebaldwin Scheme.

DBFL Consulting Engineers have been appointed by Sligo County Council to provide multi-disciplinary engineering and other specialist consultancy services to progress these two Schemes through Phases 2 to 4 of Transport Infrastructure Ireland's (TII) Project Management Guidelines.

The overarching objective of these Schemes, which are funded by TII, is to provide continuous pedestrian and cycle (i.e., Active Travel) infrastructure from Collooney to Castlebaldwin that will improve safety and accessibility for all. It is envisaged that the Schemes will integrate with Sligo's wider active travel network to improve regional and local connectivity.

Project Specific Need

Whilst the town of Collooney is conveniently located along the Sligo-Dublin rail line, the Toberbride Business Park and Castlebaldwin are only accessible by the road network, with poor facilities for people walking and cycling between the towns, which are approximately 14km apart. This results in low levels of active travel between Collooney Main St. and Toberbride Business Park and hinders activity-based tourism between Collooney and Castlebaldwin, as well as to the wider Sligo region.

The primary aim of these two Schemes is to provide high-quality pedestrian and cycle links between Collooney Town Centre and Toberbride Business Park, and between the two towns of Collooney and Castlebaldwin.

The delivery of these Scheme will enable day-to-day utility trips in Collooney and Castlebaldwin to key local services such as St. Paul's National School, childcare facilities, retail and commercial outlets as well as to recreational amenities, Owenmore Gaels GAA and the Teeling Sport & Leisure Centre. In this way, the Schemes will offer a safe and sustainable alternative to the private car particularly for short trips. This supports key National, Regional and Local policy including the National Planning Framework 2040, Climate Action Plan 2023, National Sustainable Mobility Policy, CycleConnects and the Sligo County Development Plan 2017-2023 (extended).

County Sligo is also a popular tourist destination, and it is an aim of Sligo Council Council to create top-class visitor experiences including a range of outdoor activities. The N4 Active Travel Schemes will support this through the delivery of high-quality walking and cycling routes that are integrated with a wider network including the Sligo and SLNCR Greenways. Combined, these routes will provide a comprehensive cycle network and outdoor leisure experience for residents and tourists alike.



Key Scheme Objectives

The overarching objective of the N4 Active Travel Scheme is to significantly improve the safety, accessibility, and attractiveness of the existing network for pedestrians and cyclists travelling between Collooney, Toberbride, and Castlebaldwin. The delivery of these Schemes will benefit both residents and visitors alike, and have positive social, environmental, and economic impacts.

Enhance pedestrian and cyclist safety and accessibility through the provision of safe, convenient and attractive walking and cycling routes between Collooney, Toberbride Business Park, and Castlebaldwin.

Integrate with wider land use and transport plans such as the Sligo Greenway and the SLNCR Greenway and other potential connections to expand the overall active travel network in the region.

Enable environmental improvements in relation to air and noise quality, as well as the public realm by supporting a modal shift away from the private car and toward walking and cycling.

Support the vibrancy and vitality of Collooney, Castlebaldwin and the wider Sligo region by attracting more activity-based tourists.

Provide a more efficient road network through the reduction in private motor vehicles between Collooney and Toberbride Business Park.



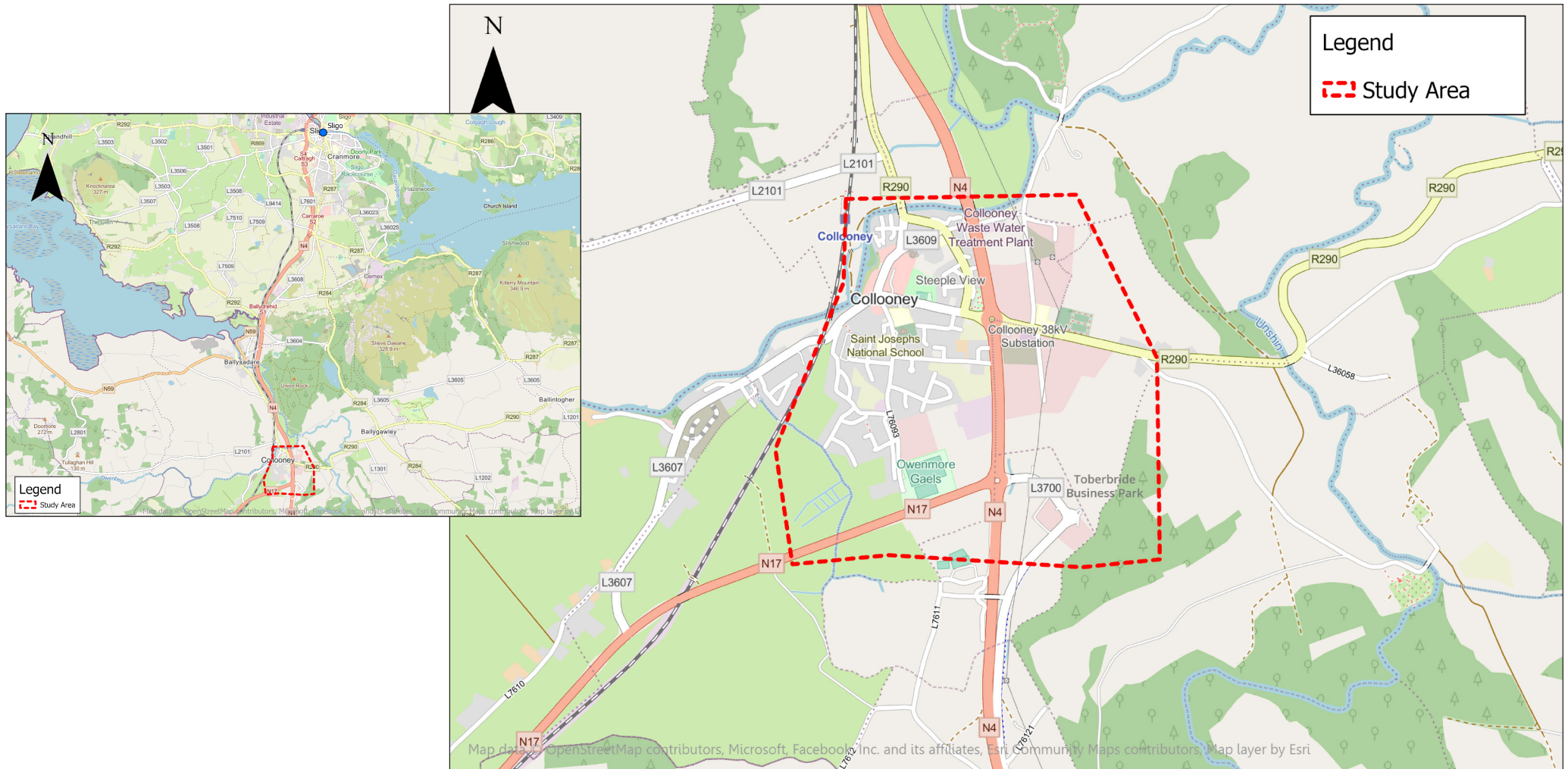


The N4 Active Travel Schemes will significantly enhance pedestrian and cyclist safety and accessibility between Collooney, Toberbride, and Castlebaldwin for residents and visitors alike.

Study Area Location Map | N4 Active Travel Collooney to Toberbride Scheme

The below map illustrates the proposed Study Area for the N4 Active Travel Collooney to Toberbride Scheme. A number of route alignment options within this Study Area have been developed to connect Collooney to the Toberbride Business Park.

We are seeking your feedback on these Options to identify a Preferred Route that will be brought forward for more detailed assessment and design. Maps of these route options are available to view online on Sligo County Council's consultation portal at: <https://consult.sligococo.ie>.



Project Phasing & Timelines

Collooney to Toberbride Business Park

This Schematic presents the overall project programme, including key steps and approval points, as well as the projected timelines.

The Collooney to Toberbride Scheme is currently at Phase 2 'Options Selection', according to TII's Project Management Guidelines - specifically Public Consultation No. 1. The purpose of this step is to get feedback from the public on a long-list of potential route options that have been developed for the Scheme.

Phase 2

Options Selection

We will identify key constraints and opportunities of the Scheme and its Study Area in order to develop and assess Options. We will determine a Preferred Option that is feasible and supports the Scheme Objectives.

Phase 3

Design & Environmental Evaluation

We will develop the design of the Preferred solution to a sufficient level of detail to establish land take requirements and undertake environmental evaluation so as to identify and mitigate impacts.

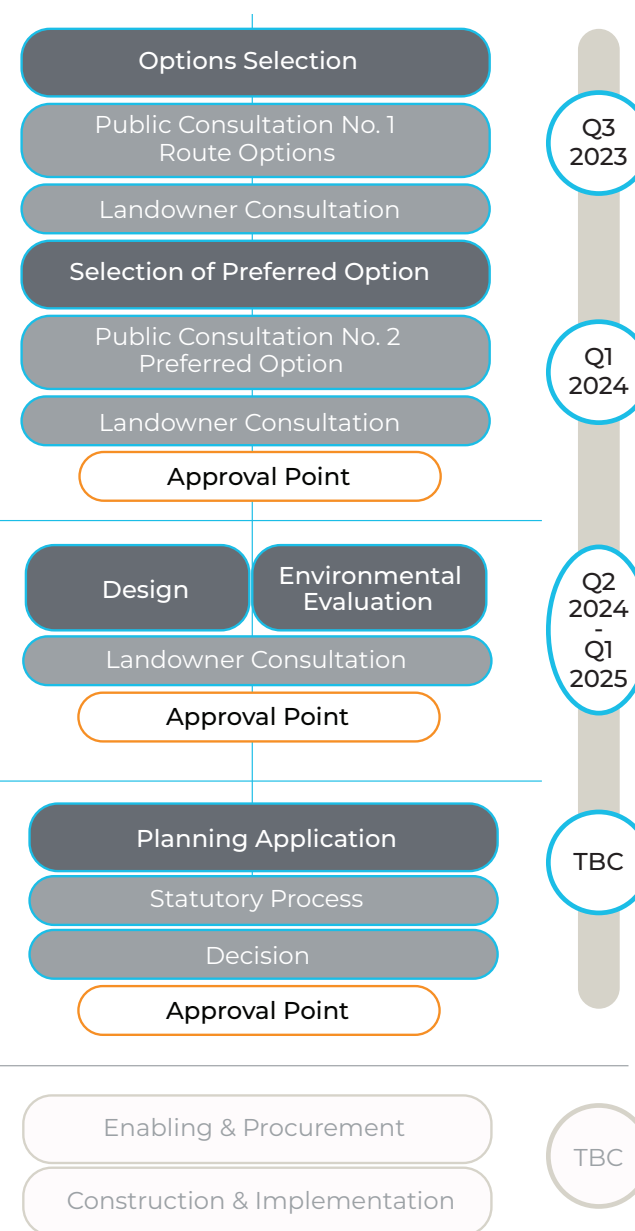
Phase 4

Statutory Process

We will advance the project through the Statutory Process to ensure that the project is developed in accordance with planning, environmental and other relevant legislation.

Phase 5 & 6

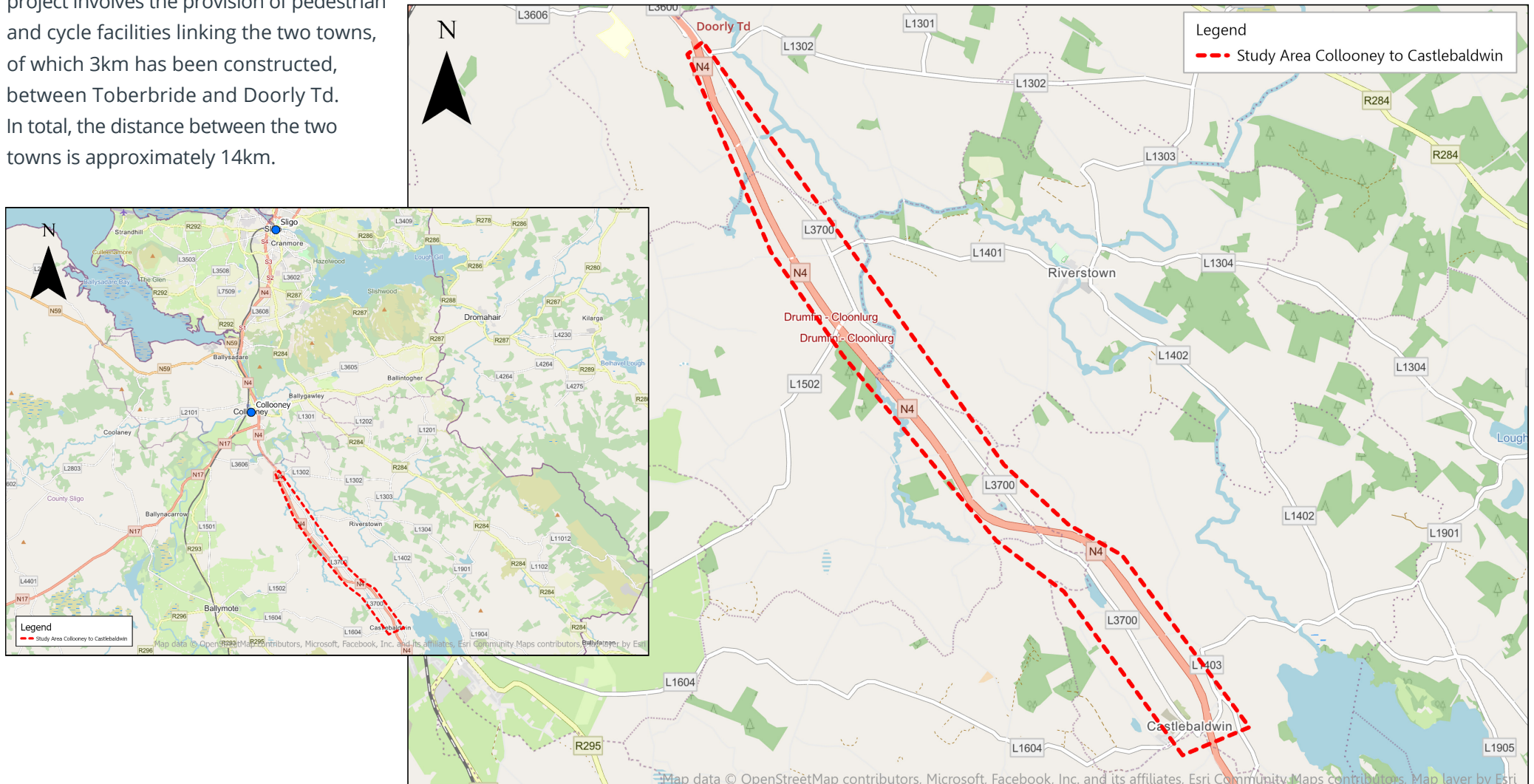
Phases 5 & 6 will be subject to planning approval and funding for the project to proceed.



Study Area Location Map | N4 Active Travel Collooney to Castlebaldwin Scheme

The Study Area for the Collooney to Castlebaldwin Scheme comprises the N4 Corridor, both the new road (N4 National Road) and the old road (since redesignated as the L3700 Local Road) in the south east of County Sligo. The project involves the provision of pedestrian and cycle facilities linking the two towns, of which 3km has been constructed, between Toberbride and Doorly Td. In total, the distance between the two towns is approximately 14km.

We are seeking your feedback on the Scheme Study Area, including any local constraints, concerns or other suggestions.



Project Phasing & Timelines

Collooney to Castlebaldwin

This Schematic presents the overall project programme, including key steps and approval points, as well as the projected timelines.

The Collooney to Castlebaldwin Scheme is currently at Phase 2 'Options Selection', according to TII's Project Management Guidelines - specifically Public Consultation No. 1. The purpose of this step is to define a Study Area for the scheme, with input from the public to ensure all local constraints and opportunities are considered.

Phase 2

Options Selection

We will identify key constraints and opportunities of the Scheme and its Study Area in order to develop and assess Options. We will determine a Preferred Option that is feasible and supports the Scheme Objectives.

Phase 3

Design & Environmental Evaluation

We will develop the design of the Preferred solution to a sufficient level of detail to establish land take requirements and undertake environmental evaluation so as to identify and mitigate impacts.

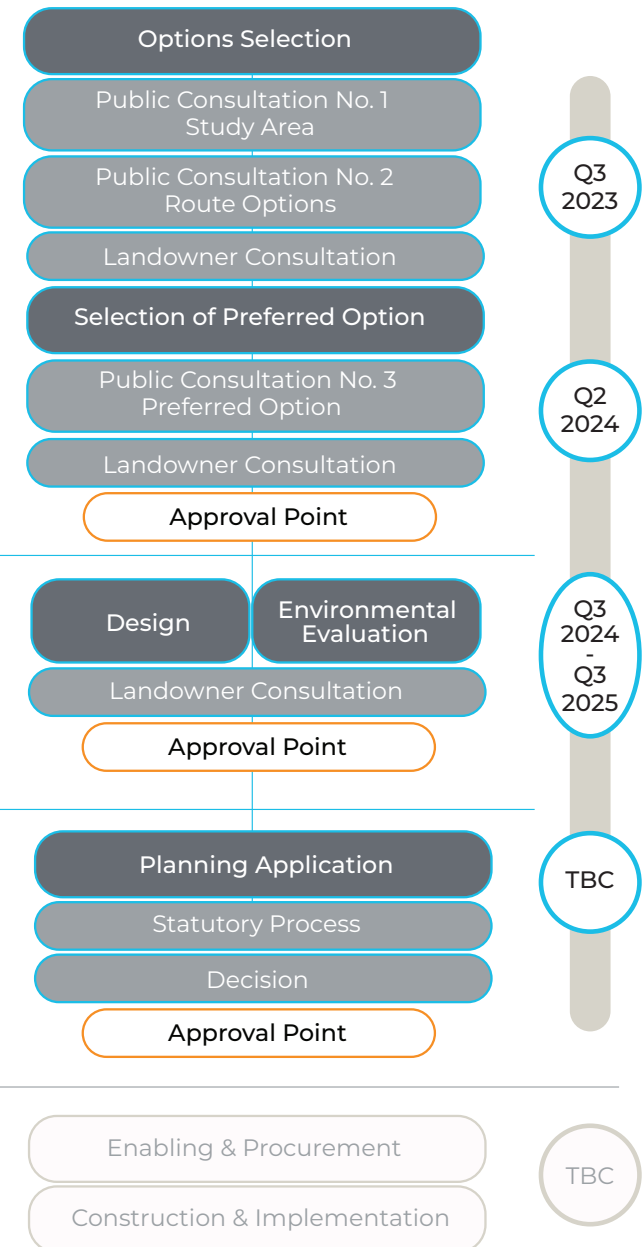
Phase 4

Statutory Process

We will advance the project through the Statutory Process to ensure that the project is developed in accordance with planning, environmental and other relevant legislation.

Phase 5 & 6

Phases 5 & 6 will be subject to planning approval and funding for the project to proceed.





GUINNESS

WINE & SPIRITS RESTAURANT

WINE & SPIRITS RESTAURANT

KEITH TAYLOR FURNITURE

Bank of Ireland
LIFE
On Country
GARDING



What's Happening Now?

The Project Team are currently at Phase 2 of the process, entitled 'Options Selection'. The purpose of Phase 2 is to identify a suitable Study Area for the Collooney to Castlebaldwin Scheme, and to examine alternative route options for the Collooney to Toberbride Scheme in order to determine a Preferred Option.

To inform this process, Sligo County Council are seeking your input. Your feedback will provide invaluable insight into local constraints and opportunities.

Public consultation for these two projects will take place from **Monday 25th September to Monday 23rd October 2023**.

How to Get Involved


There are a number of ways to learn more about the project and to engage in the process. This first round of consultation is being held online through Sligo County Council's consultation portal, which is accessible at the following website: <https://consult.sligococo.ie/browse>. The consultation portal will display all the relevant maps and materials.

There is also an opportunity to attend an in-person event where information will be on display and members of the the Project Team will be present.

Feedback Forms can be submitted to the Sligo Regional Design Office in the following ways:

 consult.sligococo.ie/browse

 projectoffice@sligococo.ie

 Freepost at:
Freepost FSG7627,
Sligo Regional Design Office,
Sligo County Council,
Unit 1, The Embankment,
Castle Street,
Sligo, F91 E4XY.

In-Person Consultation Event

Wednesday, 4th October 2023
14:00 - 20:00

The Reading Wing Community Room,
St. Paul's Church of Ireland,
Church View, Collooney,
Co. Sligo.
F91 V213.

WE WANT TO HEAR FROM YOU!



Please scan the QR code to visit Sligo County Council's online consult portal.

