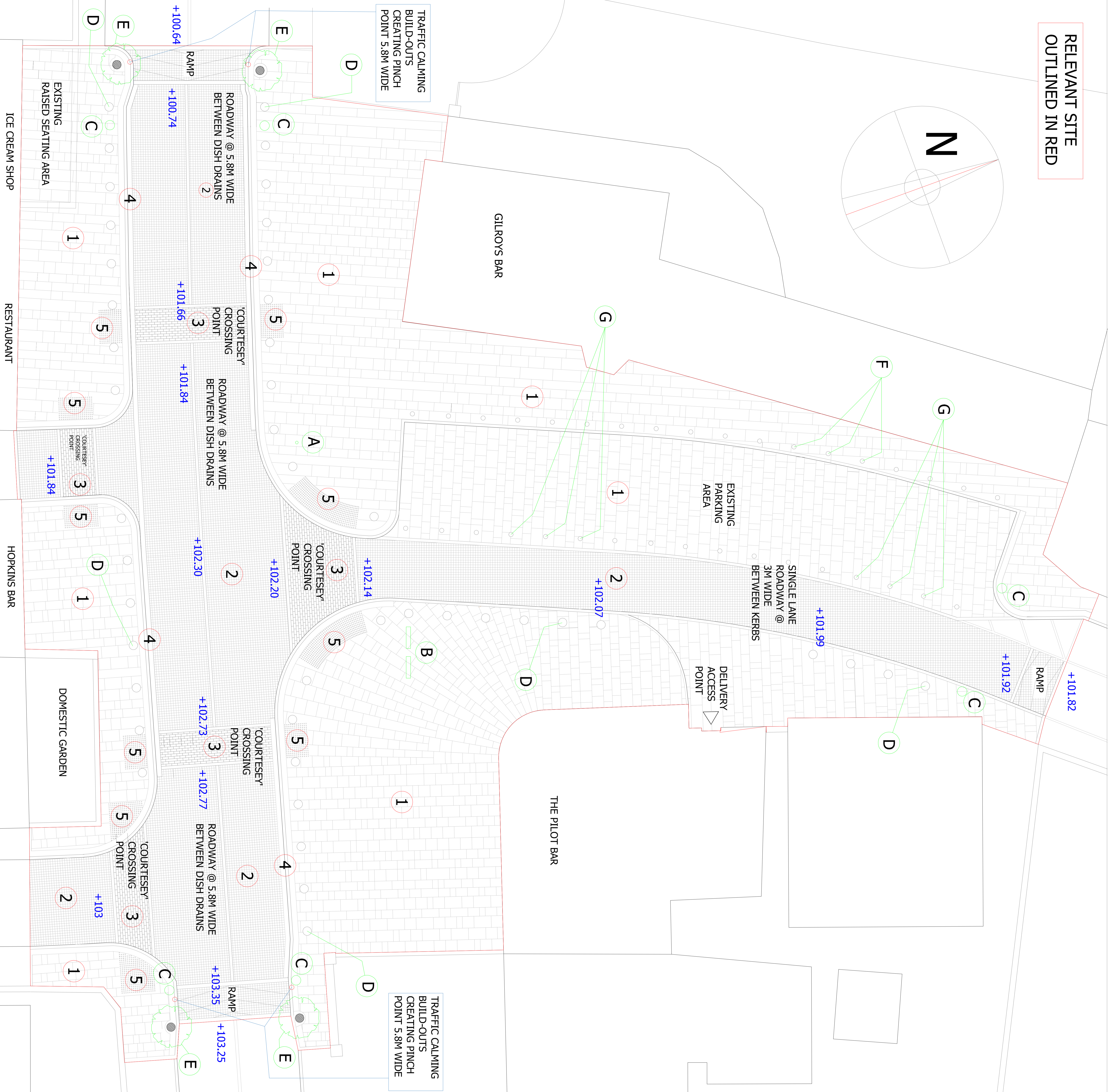
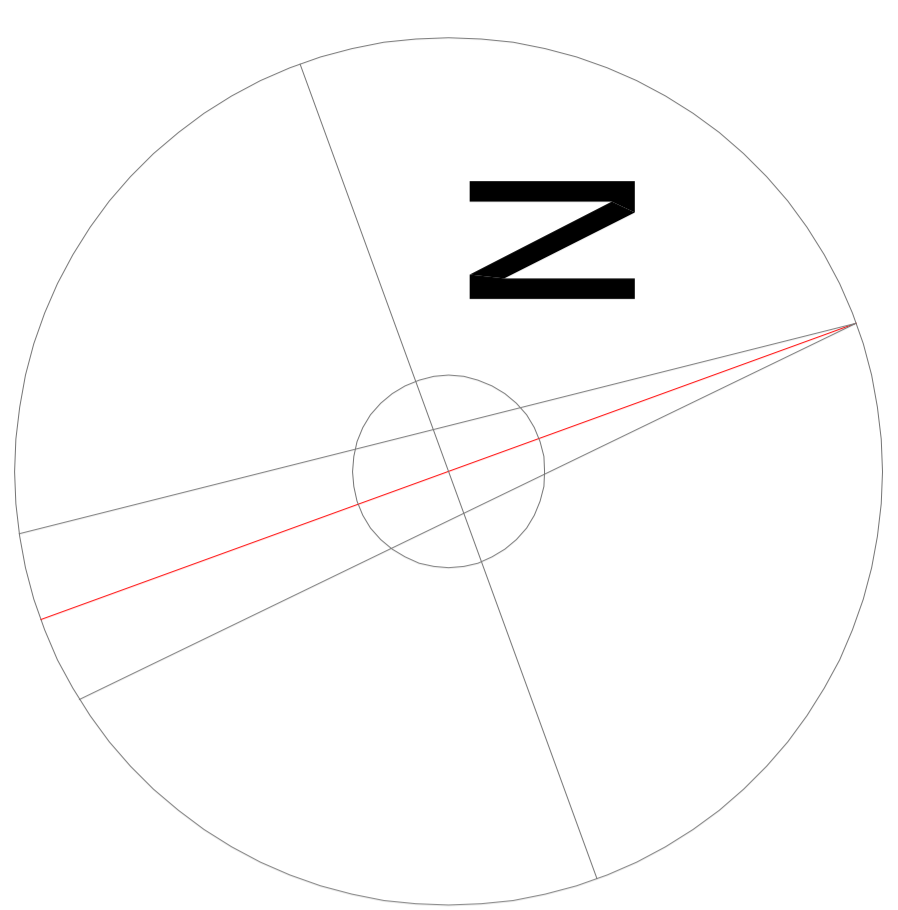
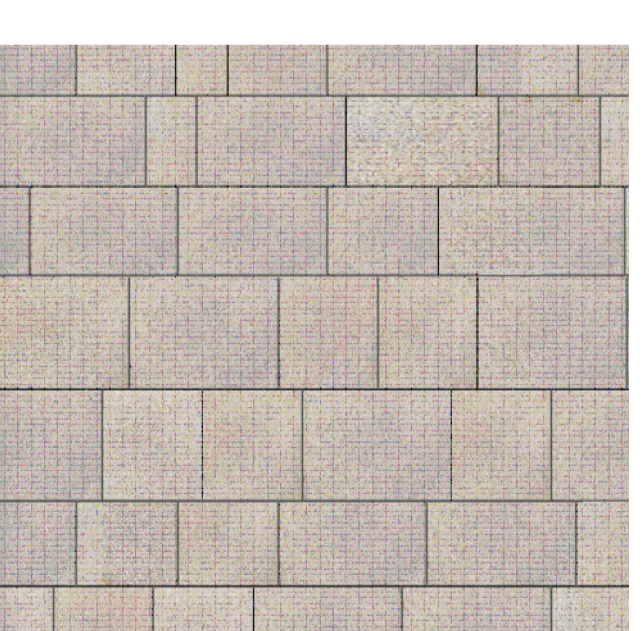


RELEVANT SITE  
OUTLINED IN RED



PROPOSED PAVING DETAILS



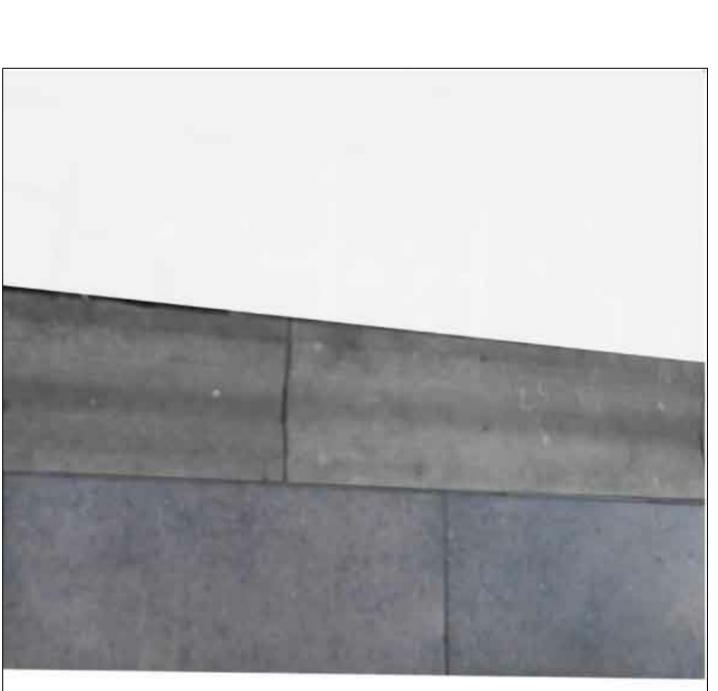
1 GRANITE PAVING



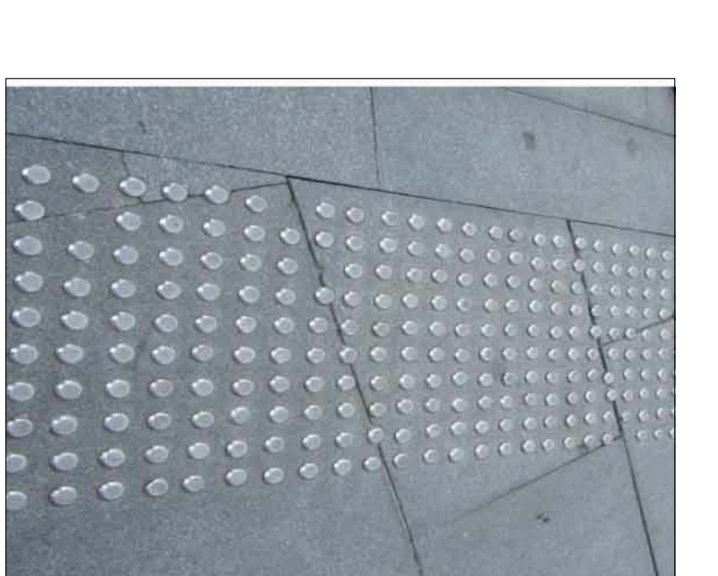
2 GRANITE Limestone CUBES - REGULAR LAYOUT OR SPAYED CIRCULAR LAYOUT - TO BE DECIDED AT DETAILED DESIGN STAGE



3 GRANITE PAVING  
100 X 300 SMOOTH



4 LIMESTONE (FOR COLOUR VARIATION)  
DISH CHANNEL AND EDGE PAVING



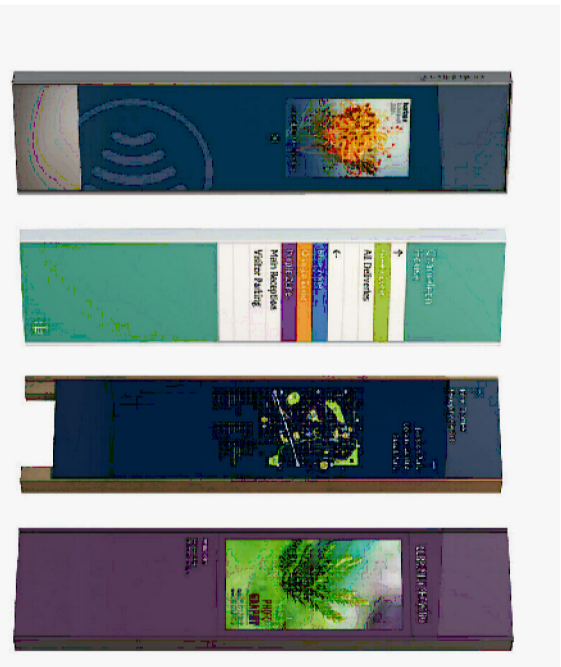
5 STAINLESS STEEL TACTILE STUDS

STREET FURNITURE AND FIXTURES

NOTE: THE STREET FURNITURE AND FIXTURES SHOWN IN THE PANEL BELOW ( A - H ) ARE EXAMPLES OF FURNITURE AND FIXTURES SIMILAR TO THOSE PROPOSED. THE GENERAL LOCATIONS OF THE ITEMS ARE SHOWN ON THE SITE LAYOUT PLAN (LEFT), HOWEVER THE PRECISE LOCATION OF THESE ITEMS AND THEIR FINAL DESIGN WILL BE DETERMINED AT DETAILED DESIGN STAGE.



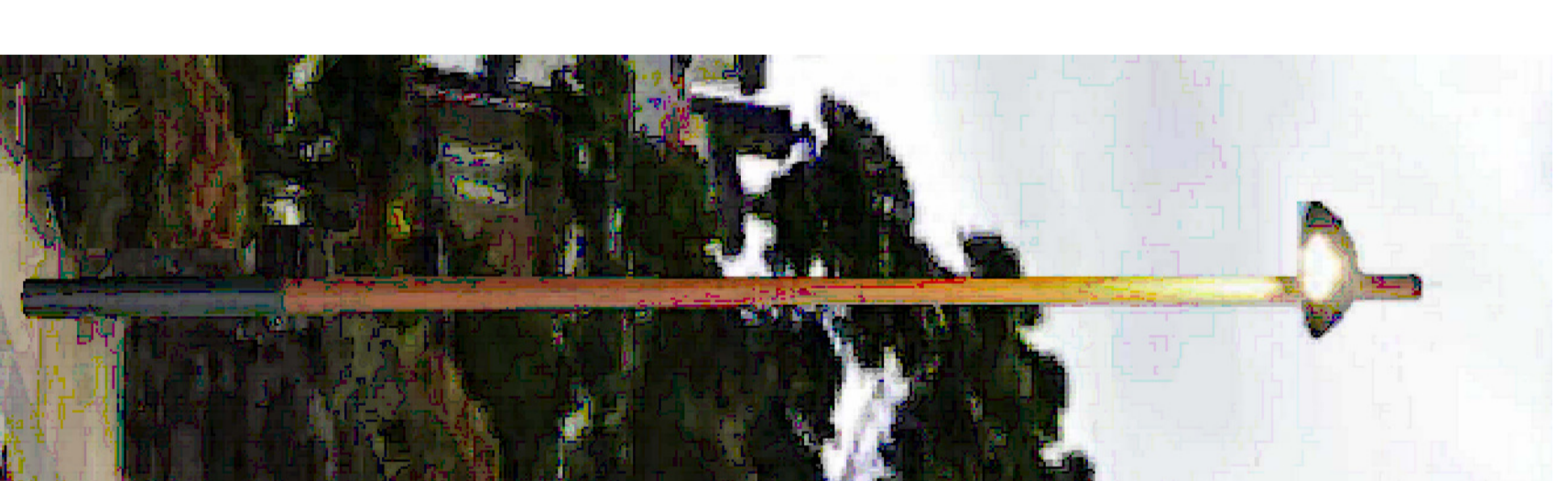
A 'WAVFINDER' DIRECTIONAL SIGNAGE



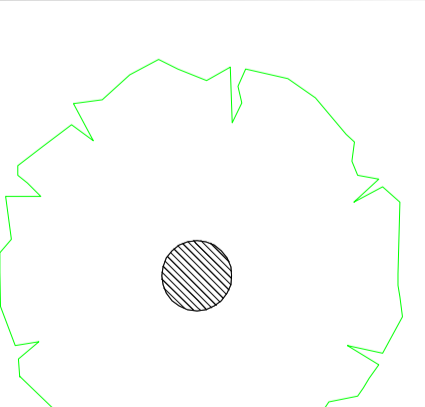
B 'WAVFINDER' URBAN MONOLITH SIGN (2MO.)



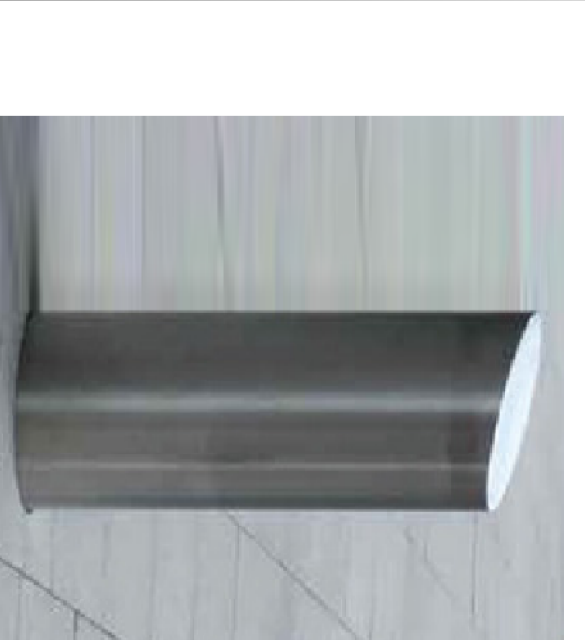
D GRANITE BOLLARD OPTIONS



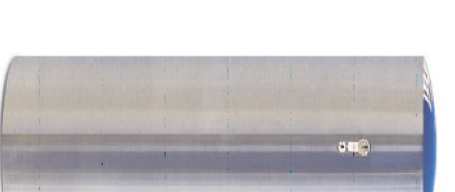
C LAMP STANDARDS AT TRAFFIC CALMING BUILD-OUT AND EXIT ON CLIFF ROAD



E SEMI MATURE TREES AT TRAFFIC CALMING BUILD-OUT



F FIXED STAINLESS STEEL BOLLARDS



G REMOVEABLE STAINLESS STEEL BOLLARDS

CLIENT SLIGO COUNTY COUNCIL

PROJECT ENNISCRONE PUBLIC REALM WORKS  
PART VIII PLANNING SUBMISSION

DRAWING TITLE PROPOSED SITE LAYOUT PLAN

Pearse St., Ballina, Co. Mayo, Ireland  
Tel: 093 710931 Fax: 093 712680 Email: info@colemanarchitects.ie

DATE NOV. 20 SCALE 1:250 @ A3  
DWG No. PL 904 - 01

