

# THE VISION FOR TUBBERCURRY



Sligo County Council  
Comhairle Chontae Shligigh

**TOBIN**  
CONSULTING ENGINEERS

**MIKO**

**LUC**

**TAYLOR McCARNEY ARCHITECTS**

## RRDF FUNDING

### RRDF Aims

Sligo County Council has been approved for Category B funding through the National Rural Regeneration and Development Fund (RRDF) to progress the regeneration and revitalisation of Tubbercurry, Co Sligo.

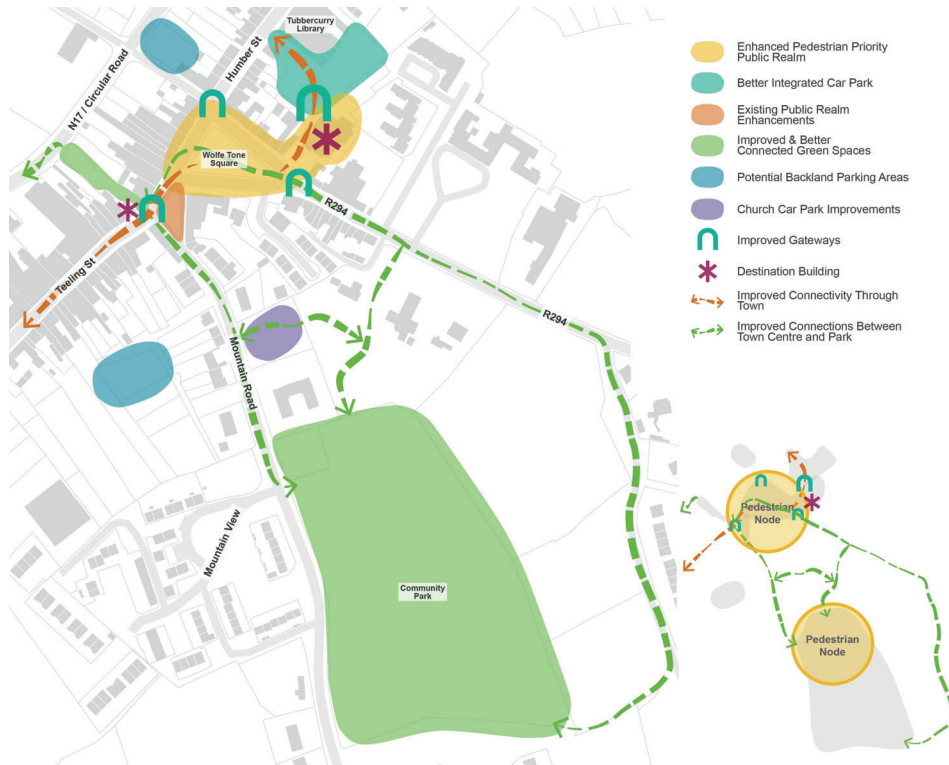
The key aims of the RRDF include:

- Rejuvenating towns and villages;
- Supporting people to live, work and learn in their own community;
- Enhancing our unique outdoor amenities, culture and heritage;
- Strengthening rural economies and achieve economic and social development in these areas;
- Re-purposing derelict, disused or heritage buildings; and
- Delivering tourism infrastructure.



## VISION FOR TUBBERCURRY

- To create a flexible, pedestrian priority space in the town centre with improved connectivity to community facilities, key attractions and car parking.
- Rationalisation of vehicle movement and car parking in order to facilitate a more flexible public realm which promotes improved pedestrian movement and events.
- Provision of outdoor town centre space to support a number of functions including weekly markets, town events and performances and outdoor dining areas aligned to local businesses.
- To improve existing destinations (St. Brigid's Hall) and support the refurbishment of potential destinations (Mary Jacks).
- To incorporate a wayfinding and signage scheme which adds to sense of place.
- Enhancement of the public realm with urban greening and sustainable drainage to ensure the project makes active contributions to building climate change resilience in the town.
- To widen the sports and recreation offer within South Sligo Community Park to encourage increase access, participation and improve health and well-being in the town.
- To integrate SMART technologies within the public realm to enhance amenity value and reinforce Tubbercurry's designation as a SMART community.



## NEXT STEPS

Where are we now?  
Concept design stage

Review and  
integrate  
feedback from  
public exhibition  
and workshops

Further  
consultation with  
community  
groups on specific  
project areas

Production of  
preliminary  
design drawings  
and costs

Public  
consultation as  
part of planning  
process

Where do we want to be?  
Submitting preliminary  
designs for planning  
Autumn 2022



# THE VISION FOR TUBBERCURRY



Sligo County Council  
Comhairle Chontae Shligigh

**TOBIN**  
CONSULTING ENGINEERS

**MIKO**

**LUC**

**TAYLOR McCARNEY ARCHITECTS**

## KEY THEMES

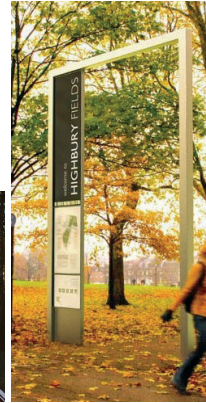
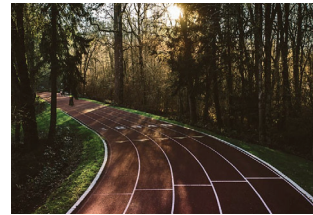
### Improving access, connectivity and wayfinding

The town centre should be pedestrian focused and connect well to local amenities. A flexible public realm offers greater use value and support for local business and events such as the Old Fair Day.



### Improving recreation facilities and access for community

A wider variety of formal sports, informal activities and play could be introduced to the park to widen out the benefits to the community. In addition to the recently renovated play park, sensory and active play elements could be integrated into the park to encourage wider use.



### Creating destination spaces and shelter

The space outside St Brigid's Hall provides an opportunity for a new covered arrival space into the Hall. It would also serve as an architectural focal point at Wolfe Tone Square and provide shelter for community events.



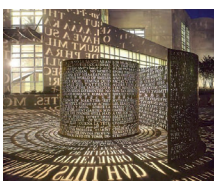
### Embedding unique qualities into wayfinding & signage

Wayfinding within the public realm will be improved through the use of relevant and relatable iconography to strengthen the sense of locality and identity. Potential themes for sculptural elements to be developed through community workshops.

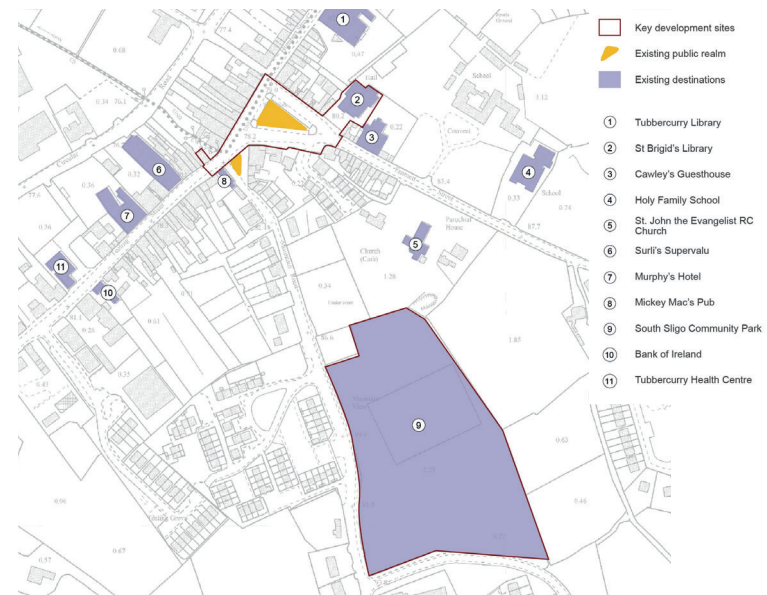


### Integrating SMART technologies

Tubbercurry is a SMART town. Integrating ambitious yet pragmatic SMART systems which use solar and movement energy will embed sustainability, improve connectivity and embrace innovation



### Development Areas & Destinations





## DESIGN PRINCIPLES

- Routes north and south of the square to become one way, recognising that both existing routes are replicating each other's function.
- A reduction of the width of these routes to 4m gives greater space to pedestrians and active users of Wolfe Tone Square.
- Pedestrian movement across the carriageway is improved as a narrow carriageway is easier to cross.
- Footpaths widened along Teeling Street at the interface with the square to provide spill out space for businesses.
- Raised pedestrian tables are sited at key locations to ensure seamless pedestrian priority movement from Teeling Street, Swift Lane and Mary Jacks through to the square, St Brigid's Hall and the Teach Laighne car park.
- Car parking is facilitated off both north and south route.
- In-line parking bays are provided along the northern route to maintain existing access for businesses.

There are many benefits to reimagining the space at Wolfe Tone Square and assessing the need for two vehicular routes connecting Teeling Street and the R294.

Encouraging better pedestrian movement by widening out footpaths and reducing the space set aside for vehicles will improve access to key facilities within the town centre, improve the town's legibility to visitors and enable flexible usage of the square for events. Clearing out barriers to movement and clutter will enable external spaces to contribute economically to the town's growth.



## Teeling Street

Re-allocating space to prioritise the movement of people means greater footpath width and greater opportunity to create a more attractive environment.

Pedestrian flow is improved and there is greater potential for businesses to incorporate outdoor dining.

Rain gardens can be incorporated to ensure drainage is channelled in a sustainable way. Tree planting will ensure there are opportunities for shade during warm weather.



## R294

We recognise that car parking is essential in supporting economic activity in Tubbercurry. However, the movement of traffic and volume of car parking is reducing the economic benefits that a central square should offer a town.

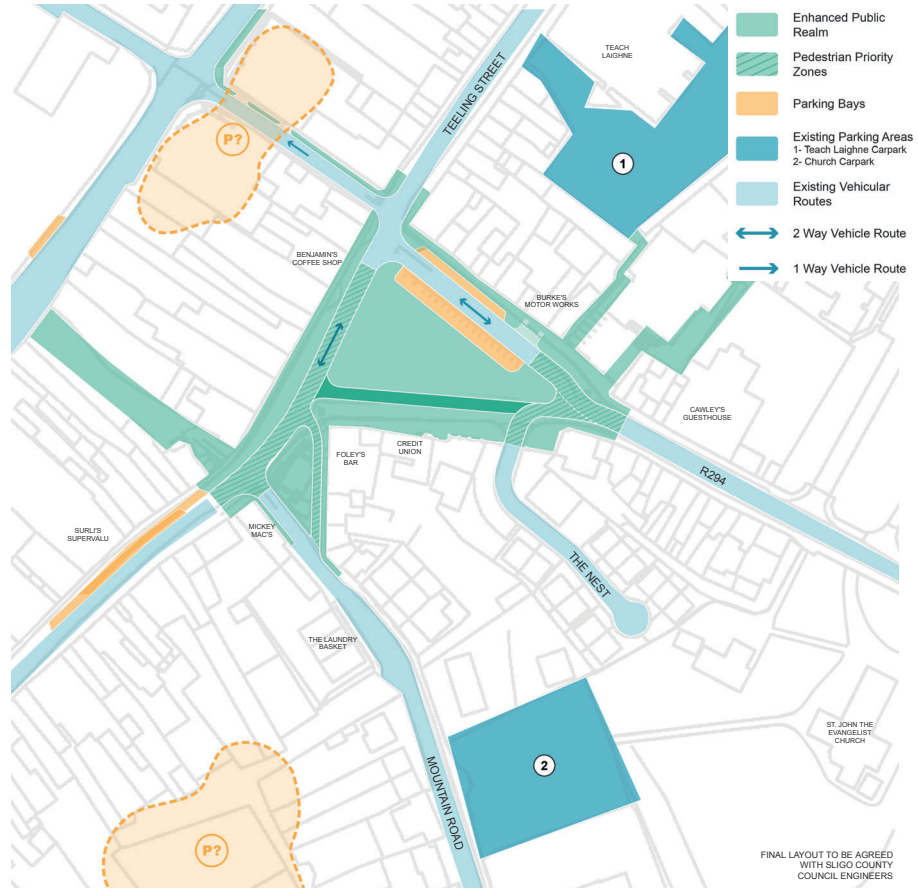
Retention of some car parking at Wolfe Tone Square is recommended, alongside improving connections to existing nearby car parks and creating new car parks in underused backland areas. These locations will need to be identified in close proximity to the town centre.

## DESIGN PRINCIPLES

There are many benefits to reimagining the space at Wolfe Tone Square and assessing the need for two vehicular routes connecting Teeling Street and the R294.

Encouraging better pedestrian movement by widening out footpaths and reducing the space set aside for vehicles will improve access to key facilities within the town centre, improve the town's legibility to visitors and enable flexible usage of the square for events. Clearing out barriers to movement and clutter will enable external spaces to contribute economically to the town's growth.

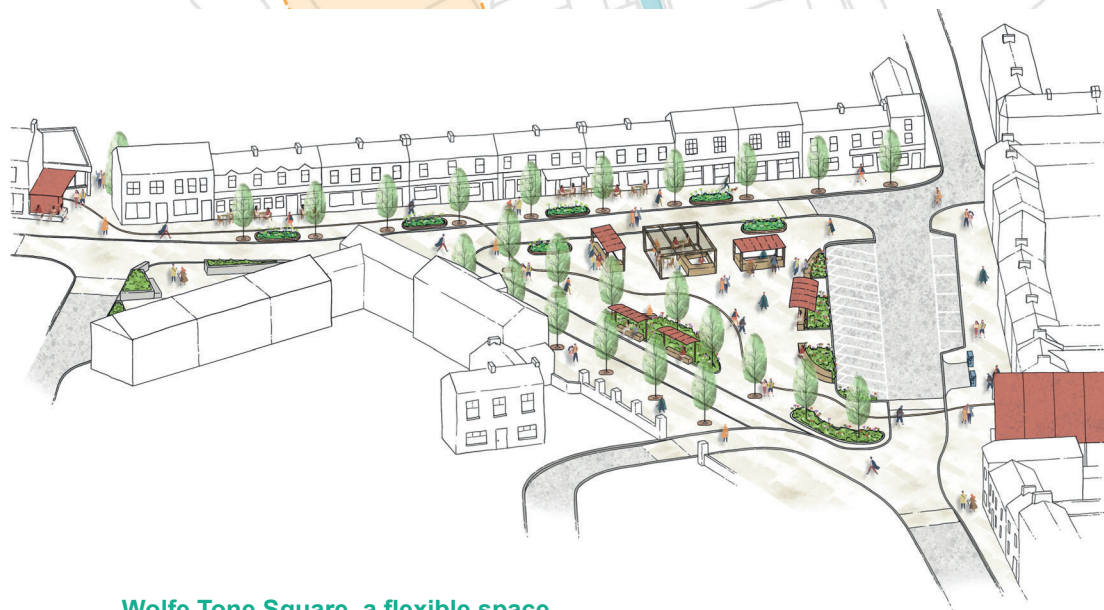
- The route south of the square to become closed to through traffic, and used for business access only, eg, deliveries.
- Removing vehicles along the southern route generates greater space for pedestrians and spill-out space for local businesses.
- Wolfe Tone Square becomes better integrated with the town centre with greater pedestrian flow from Swift Lane and across Teeling Street.
- Footpaths widened along Teeling Street at the interface with the square to provide spill out space for businesses.
- Raised pedestrian tables are extended to ensure greater pedestrian priority movement north and south of the R294 and Teeling Street.
- Car parking is facilitated along the northern route only. In-line parking bays are provided along the northern route to maintain existing access for businesses.
- Additional car parking spaces to be sourced close to Wolfe Tone Square alongside improved access to the under-used Teach Laighne car park.



### St. Brigid's Hall connections

Reducing car parking at Wolfe Tone Square can only be achieved by ensuring high quality upgrades to existing routes that connect Wolfe Tone Square and town centre parking. One of these routes runs alongside St. Brigid's Hall and connects the square with the car park at Teach Laighne.

Concept proposals for the route adjacent St. Brigid's Hall include high quality paving footpath, reducing clutter, increasing the width where feasible and incorporating a decorative light feature which links visually into Wolfe Tone Square.



### Wolfe Tone Square, a flexible space...

Wolfe Tone Square has the potential to become the social, environmental and economic hub of Tubbercurry.

- Tree planting and rain gardens will ensure the town is resilient to the climate change and biodiversity loss crises.
- A bespoke and unique integrated light and art feature within the floorscape has the potential to attract footfall and interest.
- Open areas without planting / seating can be used flexibly by local businesses for food and drink opportunities. This space can be used flexibly during events.
- Fixed areas of seating, planting and shelter would provide a space for people to gather as a community and encourage social interactions.

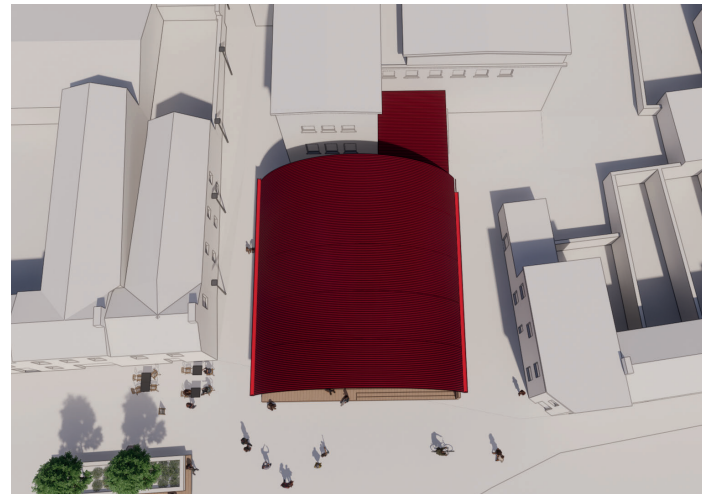


## PROJECT OBJECTIVES

- To enhance the building's façade to better convey its importance to community in the town.
- To provide Wolfe Tone Square with a contemporary architectural focal point which is distinctive and unique.
- To provide a sheltered outdoor space to increase year round use of the square.
- To define and animate the existing walkway from Wolfe Tone Square to the car park at Teach Laighne.
- To provide an extension to the existing hall including a green room / rehearsal room and new stage access.
- Internal refurbishments to include new stage lighting to current standards.
- Updated IT infrastructure including data cabling and broadband to facilitate conference facilities as well as connectivity for community groups and the public.
- To maintain existing access to nearby businesses and some car parking.
- To improve the quality of the existing route to the Teach Laighne car park.



The shelter could be used for town events, markets and as a 'red carpet' entrance for Hall events and productions.



The shelter has the potential to directly connect to the entrance of St Brigid's Hall. It could be designed to incorporate a ramp which would replace the existing ramped access.



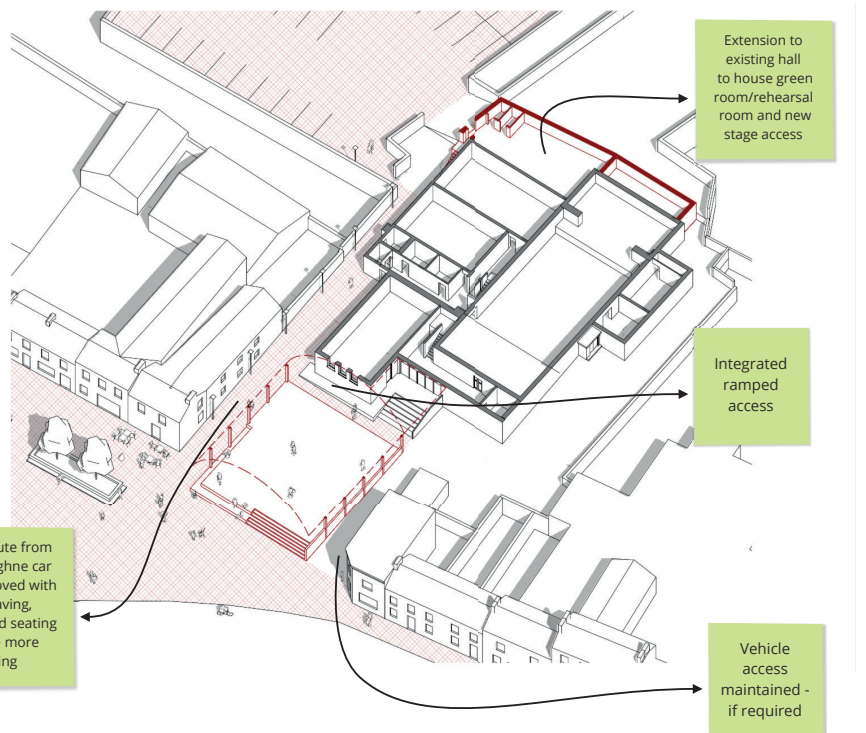
The shelter takes its design cues from the hay barns traditionally found in agricultural areas in Ireland. Its arched red roof is a strikingly modern addition to the square.



Vehicle access retained to right hand side of proposed shelter.



View from the walkway from Teach Laighne car park, looking towards Wolfe Tone Square.



The existing improvements to Swift Lane linear park to be made good at this location

Extension to existing footprint to facilitate more community space

The existing ESB substation to be screened and a seating bench integrated



# SOUTH SLIGO COMMUNITY PARK

Complete our survey at:  
<https://www.surveymonkey.com/r/TubbercurrySurvey>

## PROJECT OBJECTIVES

- To enhance and increase the sports and recreation offer within the Park in order to encourage increased participation and improve health and well-being in the town.
- To specifically incorporate facilities for all ages, including teenagers and young adults.
- To incorporate provision of sensory elements such as a sensory garden, food growing and natural play elements.
- To facilitate a lit walking route that is accessible for all and open at all times.
- To improve pedestrian and cycle access into the Park from surrounding residential areas, the town centre and The Holy Family school through the introduction of new entrances.
- To use the same visual language at entrance gateways as proposed for the Town Centre, to promote Tubbercurry as a unique location.



## KEY THEMES

### An improved network of footpaths and cycleways

A footpath network that encourages wider use of the park and connects to a greater number of entrances will provide greater community benefit. The path network can use a varied material palette and incorporate areas of seating and shelter.



### A suite of entrance points

Offering a greater number of entrances or gateways into the park, which are carefully sited, will remove any barriers to accessing the park. These could incorporate sculpture, shelter and seating.



### Promoting an active lifestyle

A wider variety of formal sports, informal activities and play could be introduced to the park to widen out the benefits to the community. In addition to the recently renovated play park, sensory and active play elements could be integrated into the park to encourage wider use.



### A space for nature & improved health and well-being

The park could make use of its scale through the creation of meadows, ornamental planting and tree planting to promote climate resilience, biodiversity and provide health benefits to the local community.

