

The floor plan shows a 3-bedroom house with an adjacent house to the north. The layout includes a central hall (10.9m²) connecting to three bedrooms (13.5m², 13.0m², and 10.9m²), a bathroom (5.0m²), a kitchen/dining/living area (30.0m²), a store (2.9m²), and a plant room (1.3m²). The plan also features a staircase, refuse bins, and various dimensions for walls and furniture. The overall dimensions of the house are 120'10" by 30'00".

Architectural elevation drawing of a house. The drawing includes the following height markers and dimensions:

- 9.160 m Pitch
- 5.840 m Eaves
- 5.250 m Eaves
- FFL 3.150 m First Floor
- Painted steel column as per structural engineer's spec.
- FFL 0.000 m Ground Floor
- 1.220 m (height of ground floor wall)
- 1.23 m (height of ground floor wall)
- 0.160 m String course
- 0.940 m (height of upper floor wall)
- 1.23 m (height of upper floor wall)

adjacent house

Dimensions:

- Overall Width: 1600
- Overall Depth: 5590
- Overall Height: 6675
- Overall Length: 10200

Rooms and Dimensions:

- 2B/4P: 80.8m²
- Kitchen/Dining / Living: 29.8m²
- Balcony: 8.3m²
- Bedroom 1: 12.1m²
- Bedroom 2: 13.8m²
- Hall: 7.1m²
- Store: 1.3m²
- Store: 1.4m²
- Store: 3.3m²
- Bathroom: 5.9m²
- Plant: 1.5m²

Other Labels:

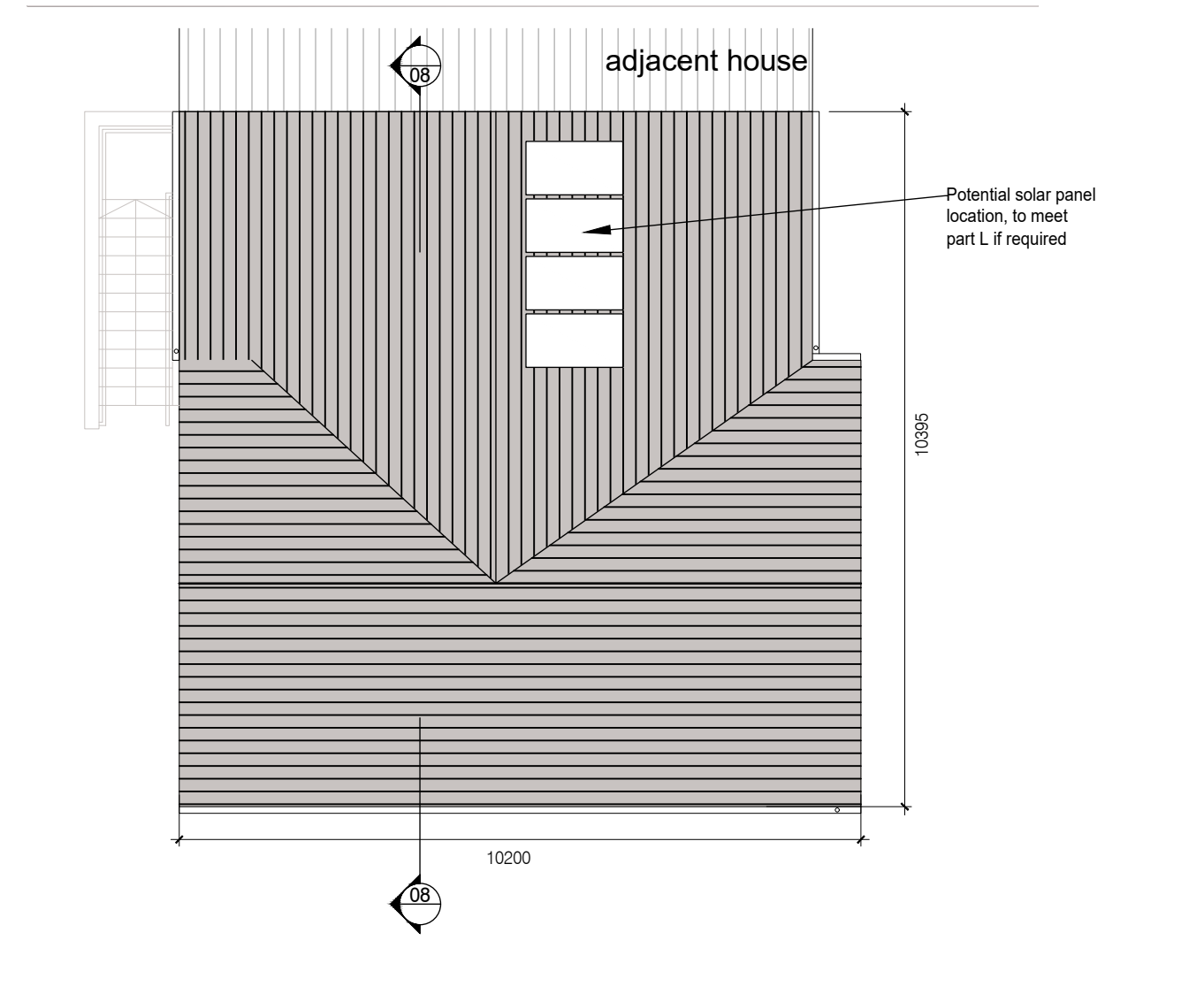
- UP
- DOWN
- 08
- 09
- 05
- 06
- 07
- 08
- 09
- 10
- 11
- 12
- 13
- 14
- 15
- 16
- 17
- 18
- 19
- 20
- 21
- 22
- 23
- 24
- 25
- 26
- 27
- 28
- 29
- 30
- 31
- 32
- 33
- 34
- 35
- 36
- 37
- 38
- 39
- 40
- 41
- 42
- 43
- 44
- 45
- 46
- 47
- 48
- 49
- 50
- 51
- 52
- 53
- 54
- 55
- 56
- 57
- 58
- 59
- 60
- 61
- 62
- 63
- 64
- 65
- 66
- 67
- 68
- 69
- 70
- 71
- 72
- 73
- 74
- 75
- 76
- 77
- 78
- 79
- 80
- 81
- 82
- 83
- 84
- 85
- 86
- 87
- 88
- 89
- 90
- 91
- 92
- 93
- 94
- 95
- 96
- 97
- 98
- 99
- 100

Architectural elevation drawing of a house. The drawing includes the following labels and measurements:

- Location:** location, to meet part L, if required (pointing to a window on the roof).
- Pitch:** 9.160 m (indicated by a downward arrow).
- Eaves:** 5.840 m (indicated by a downward arrow).
- Eaves:** 5.250 m (indicated by a downward arrow).
- Obscure glazing:** (pointing to a window on the side wall).
- FFL 3.150 m First Floor:** (indicated by a downward arrow).
- FFL 0.000 m Ground Floor:** (indicated by a downward arrow).
- Dimensions:**
 - 9.160 (vertical height from ground to roof peak)
 - 3.40 (vertical height from ground to roof peak)
 - 2.00 (vertical height from ground to first floor level)
 - 12.25 (horizontal distance from ground level to the start of the first floor level)

Architectural section drawing of the first floor. The drawing shows a cross-section of the building with a sloped roof on the right side. Key dimensions and labels include:

- Overall width: 9.160 m
- Overall height: 5.840 m
- Roof slope: 40°
- Room labels: Bedroom 1, Hall, Kitchen/ Dining, Bathroom, Entrance Hall
- Dimensions for rooms: 3.150 m (main living area), 2.700 m (Bathroom), 2.500 m (Kitchen/ Dining), 1.125 m (terrace)
- Labels: FFL 3.150 m, First Floor, FFL 0.000 m, Ground Floor, Pitch, Eaves



Architectural elevation drawing of a building facade. The drawing shows a gabled roof with a pitch of 9.160 m. The eaves are at a height of 5.840 m. The first floor is at a height of 5.250 m. The ground floor is at a height of 0.000 m. The drawing also shows a section of the building with a height of 2.895 m and a section with a height of 1.235 m. The drawing includes a note: "Painted s per struc spec."

Unit Type C1 Schedule of Accom.	
2 bed 1 storey duplex (2B4P) UD	
Area compliance with CDP & QHSC 2007	
Target Minimum floor areas	
Aggregate GIA	73.0m2
Aggregate Living	30.0m2
Aggregate Bedroom	25.0m2
Aggregate Storage	6.0m2
Area Breakdown	
GIA - 2B/4P GF	83.5m2
Aggregate GIA	83.5m2
Room Name	Area
Living Room/ Kitchen	30.0m2
Aggregate Living	30.0m2
Bedroom 1	13.5m2
Bedroom 2	13.0
Bedroom 3	-
Aggregate Bedroom	26.5m2
Storage	6.0m2
Aggregate Storage	6.0m2
Bathroom	5.0m2
WC	-
Plant	1.3m2

Unit Type C2 Schedule of Accom.	
2 bed 1 storey duplex (2B4P)	
Area compliance with CDP & QHSC 2007	
Target Minimum floor areas	
Aggregate GIA	73.0m2
Aggregate Living	30.0m2
Aggregate Bedroom	24.4m2
Aggregate Storage	6.0m2
Area Breakdown	
GIA - 2B/4P 1F	80.8m2
Aggregate GIA	80.8m2
Room Name	Area
Living Room/ Kitchen	29.8m2
Aggregate Living	29.8m2
Bedroom 1	12.1m2
Bedroom 2	13.8m2
Bedroom 3	-
Aggregate Bedroom	25.9m2
Storage	6.0m2
Aggregate Storage	6.0m2
Bathroom	5.9m2
WC	-
Plant	1.5m2

Notes:

Do not scale from this drawing.
Use figured dimensions only.
All errors and omissions to be reported to the Architect.
This drawing to be read in conjunction with relevant consultant's drawings.
All dimensions are in millimetres and all levels are in meters to match Datum unless otherwise noted.

Contractor Design responsibility
It is noted that there are many elements within the works that require Contractor design, and will be subject to certification as part of BCAR - see Preliminary Inspection Plan for clarity on certification required.

© This drawing or design may not be reproduced without permission.

1.	ROOF:	DARK COLOURED FIBRE CEMENT OR CLAY OR CONCRETE ROOF TILES IN SELECTED COLOUR.
2.	WALLS:	SELECTED CLAY BRICKWORK WHERE INDICATED OTHERWISE LIGHT RENDER FINISH TO SELECTED COLOUR.
3.	WINDOWS & DOORS:	POWERDER-COATED ALUMINIUM WINDOWS & DOORS TO SELECT COLOUR. OBSCURE GLAZING WHERE INDICATED TO SENSITIVE WINDOWS.
4.	CILLS:	CILLS TO SELECTED COLOUR AND FINISH
5.	RAINWATER GOODS:	POWDER-COATED ALUMINIUM GUTTERS, FASIAS, SOFFITS AND DOWNPIPES TO SELECTED COLOUR.
6.	CURTILAGE WALLS:	RENDER & CLAY BRICK FINISH WITH CAPPING AS INDICATED. POWDER-COATED METAL RAILINGS TO SELECTED COLOUR. REFER TO BOUNDARY TREATMENT DWG: SHB3-BLN-AR-COA-DR-0104
7.	ENTRANCE CANOPY:	POWDER COATED ALUMINIUM TO SELECTED COLOR
8.	SIDE GATE:	TIMBER TO SELECTED COLOR
9.	BACK GARDENS:	PC CONCRETE POST AND PC CONCRETE PANELS
10.	EXTERNAL STAIRS AND STEPS:	BRUSHED CONCRETE FINISH
11.	BALCONIES AND BALUSTRADE:	POWDER COATED METAL TO SELECTED COLOUR
Refer to Site Plan for:		
	-	Finished floor levels to survey datum
	-	Orientation
	-	Handing of type for each unit
	-	Private open space for each unit