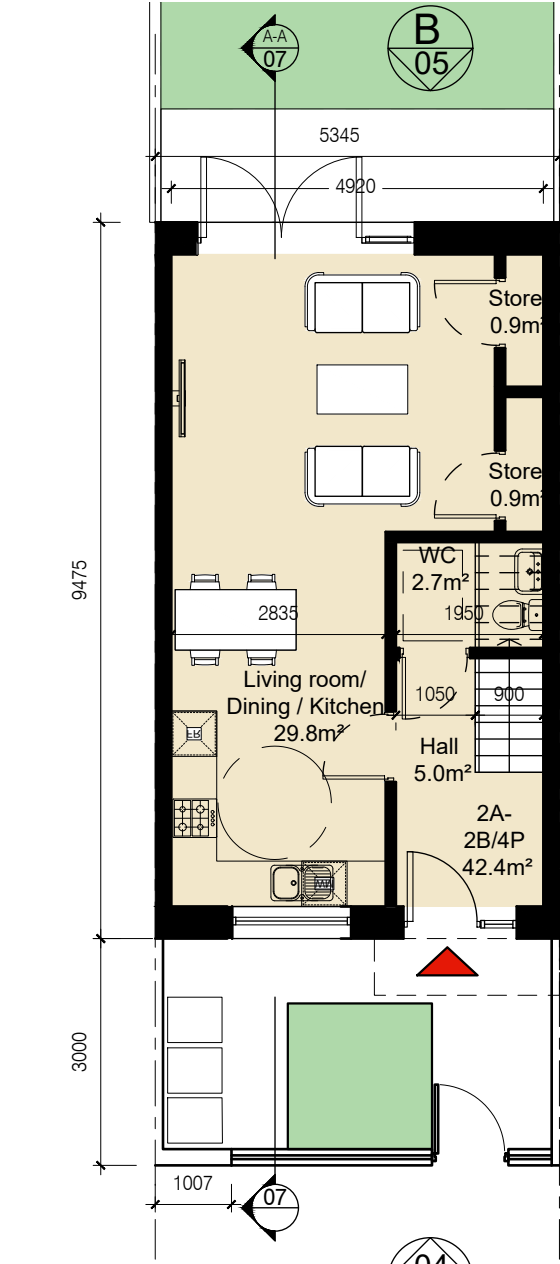
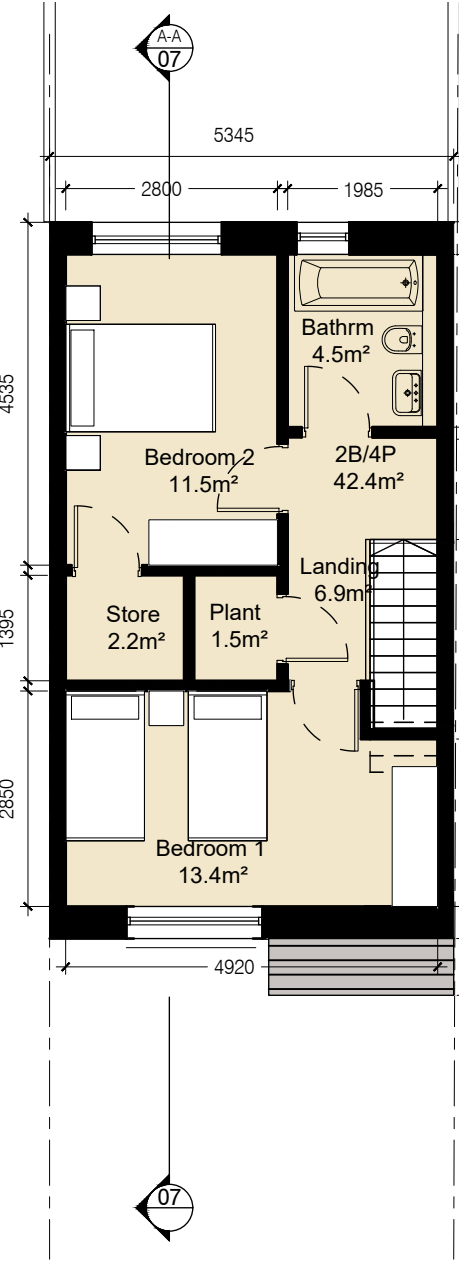


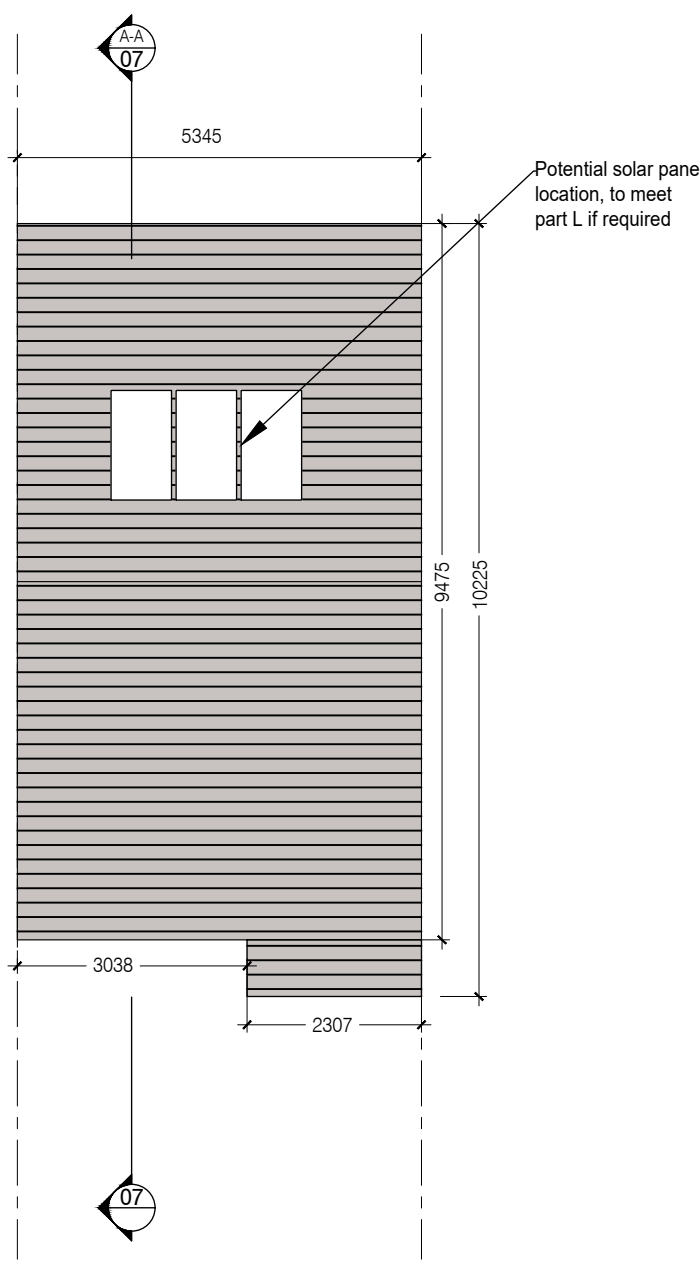
HOUSE TYPE 2A



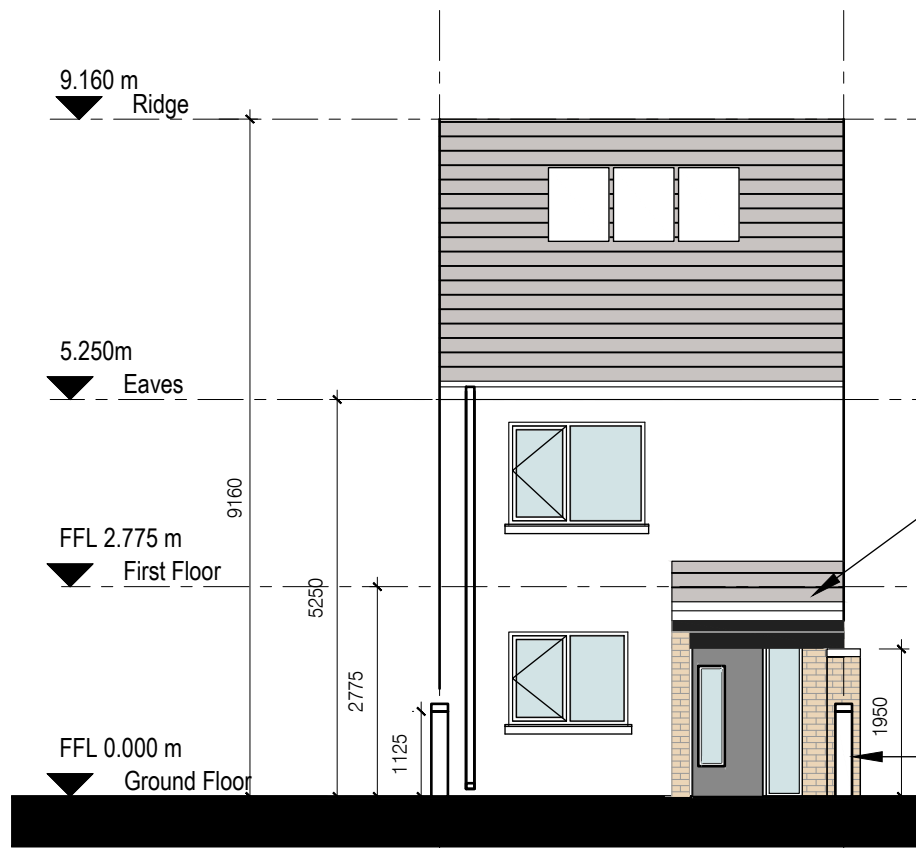
1 Ground Floor Plan  
Scale: 1:100



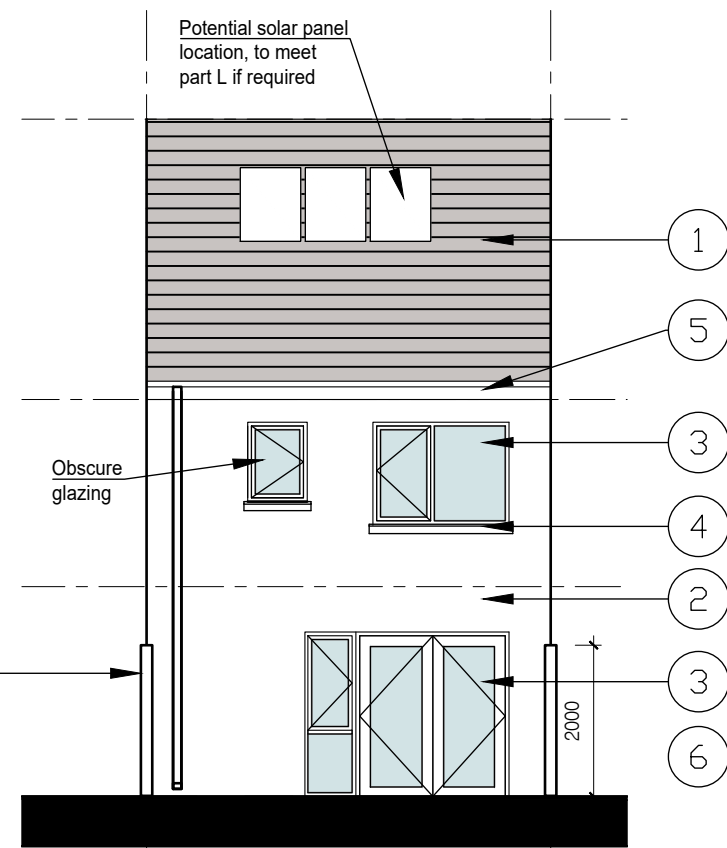
2 First Floor Plan  
Scale: 1:100



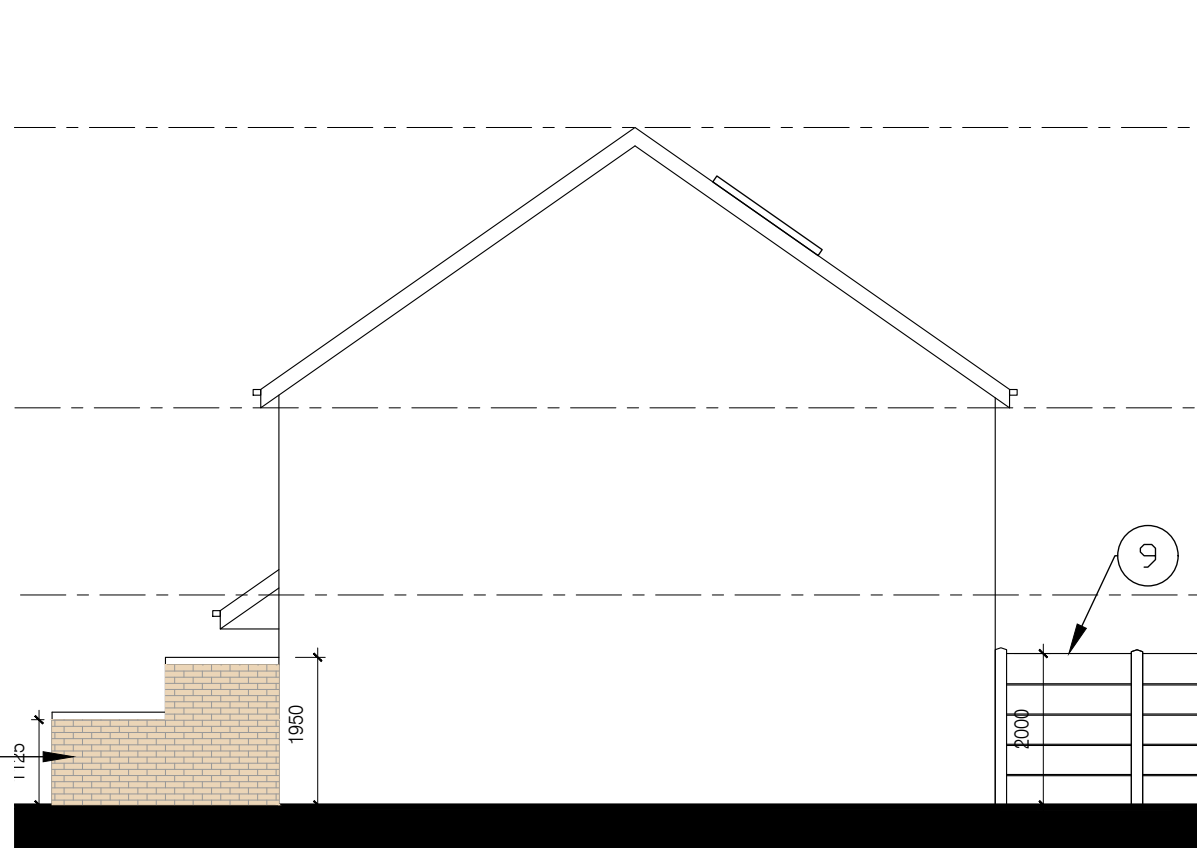
3 Roof Plan  
Scale: 1:100



4 Front Elevation A  
Scale: 1:100

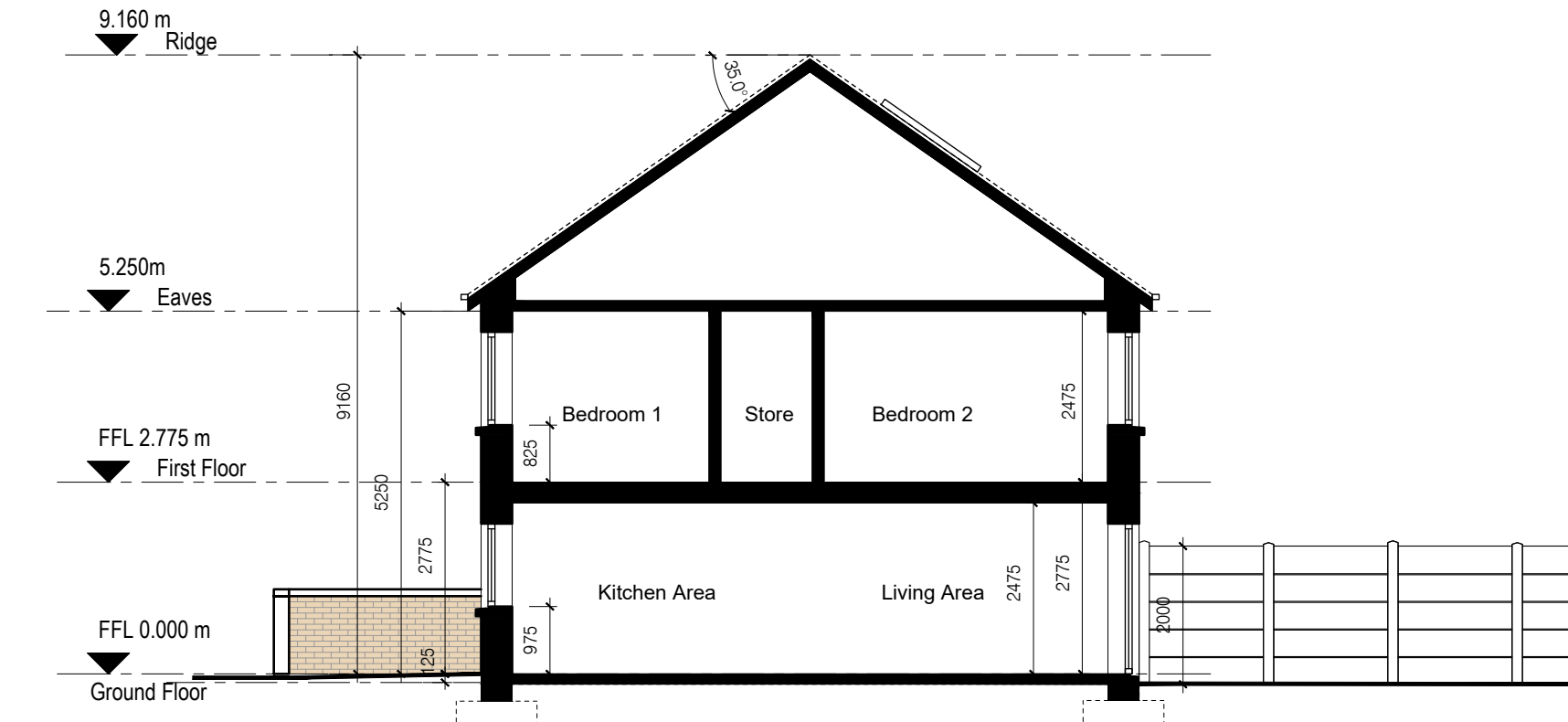


5 Rear Elevation B  
Scale: 1:100



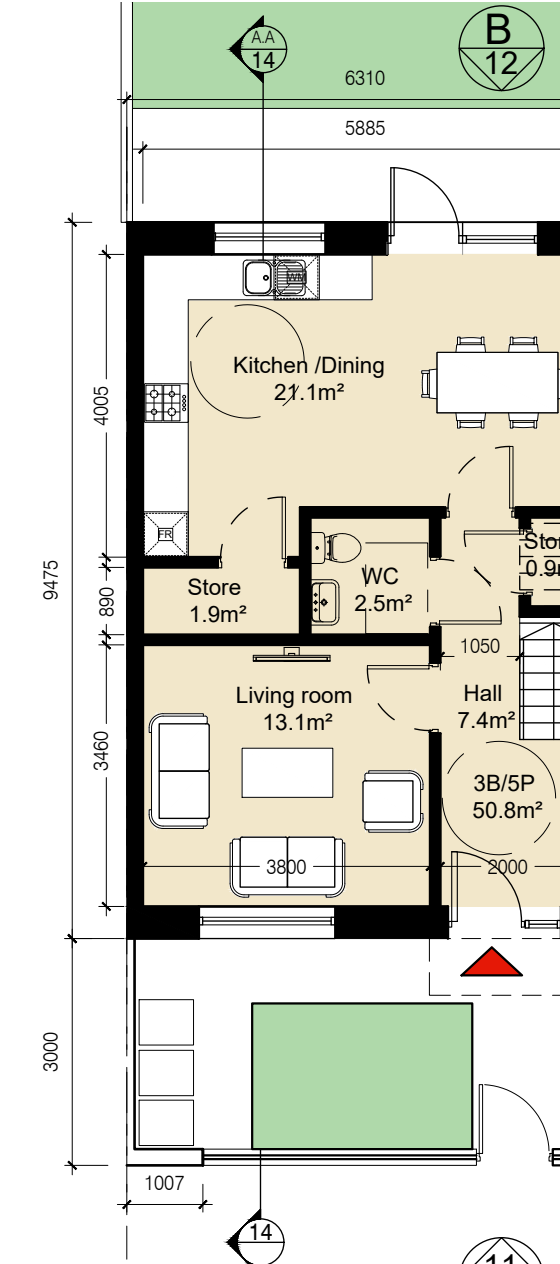
6 Side Elevation C  
Scale: 1:100

Unit Type 2A Schedule of Accom.	
2 bed 2 storey dwelling (2B4P)	
Area compliance with CDP & QHSC 2007	
Target Minimum floor areas	
Aggregate GIA	80.0m²
Aggregate Living	30.0m²
Aggregate Bedroom	25.0m²
Aggregate Storage	4.0m²
Area Breakdown	
GIA - 2B/4P GF	42.4m²
GIA - 2B/4P FF	42.4m²
Aggregate GIA	84.8m²
Room Name	
Living Room	13.0m²
Kitchen	16.8m²
Aggregate Living	29.8m²
Bedroom 1	13.4m²
Bedroom 2	11.5m²
Aggregate Bedroom	24.9m²
Storage	4.0m²
Aggregate Storage	4.0m²
Bathroom	4.5m²
WC	2.7m²
Plant	1.5m²

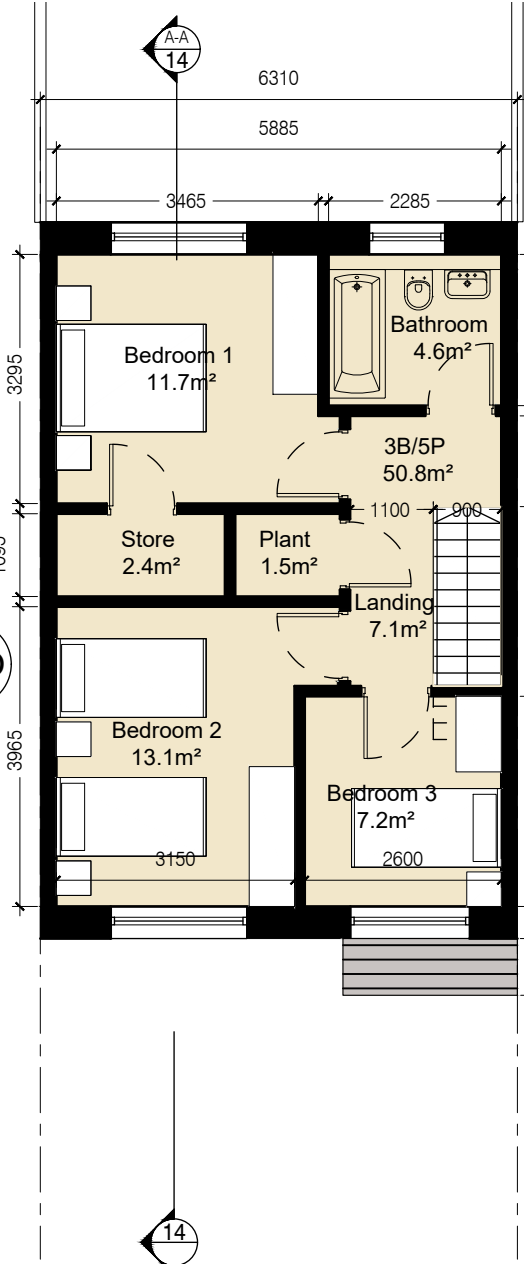


7 Section A-A  
Scale: 1:100

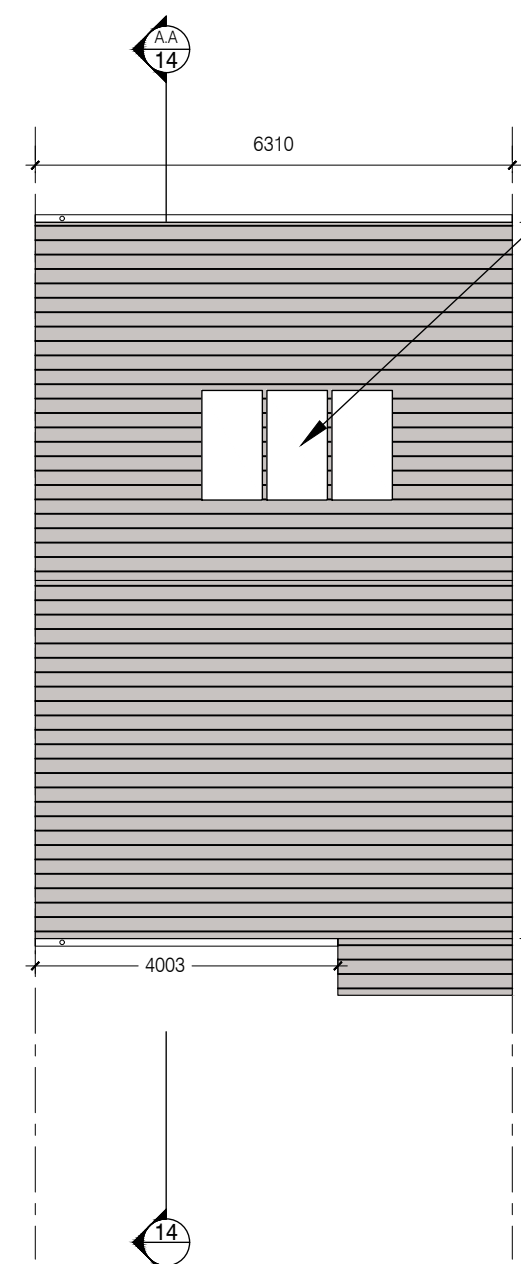
HOUSE TYPE 3A



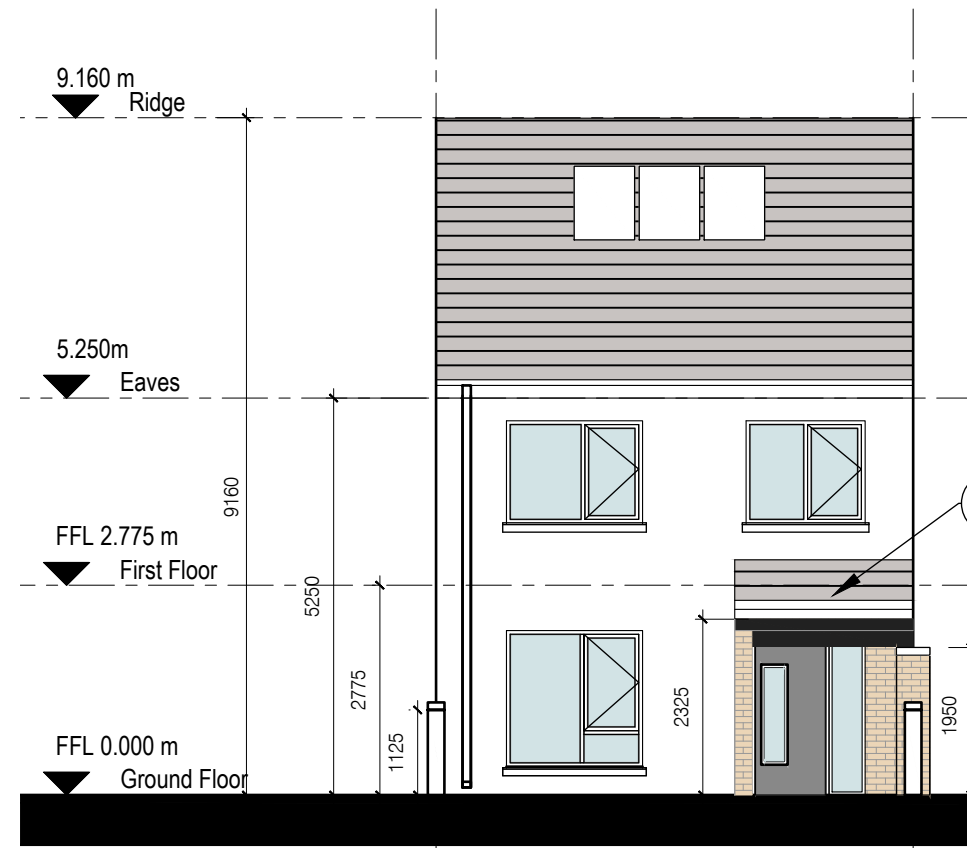
8 Ground Floor Plan  
Scale: 1:100



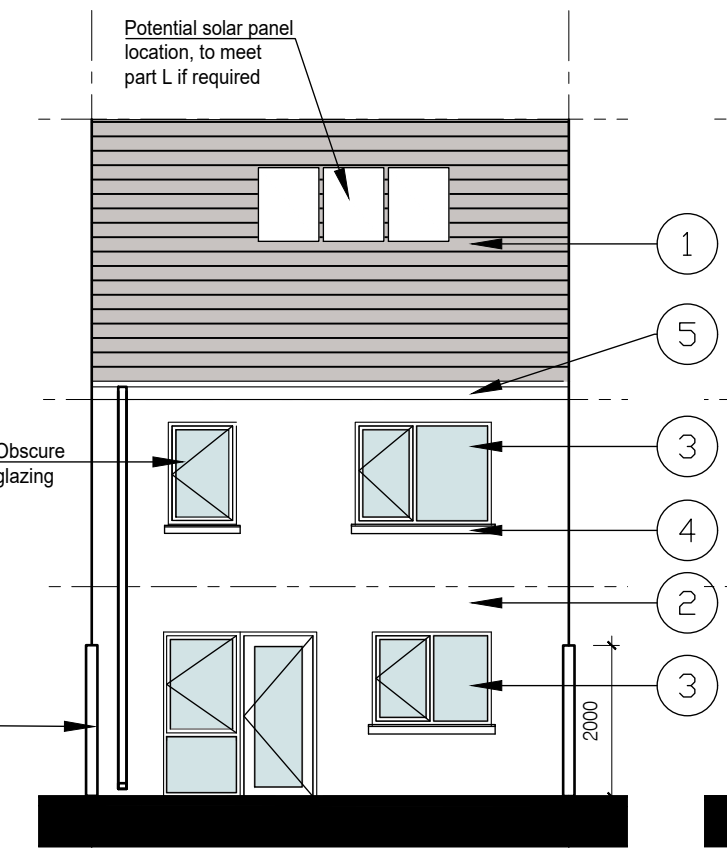
9 First Floor Plan  
Scale: 1:100



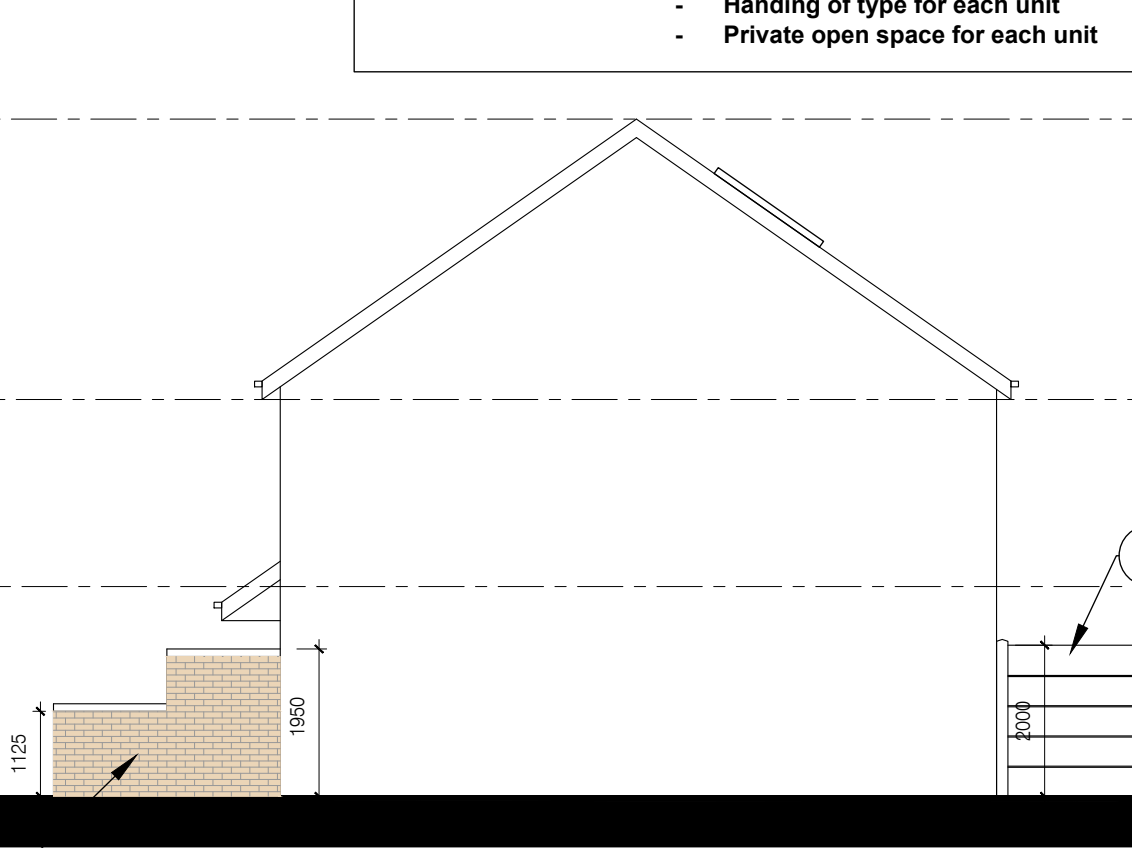
10 Roof Plan  
Scale: 1:100



11 Front Elevation A  
Scale: 1:100

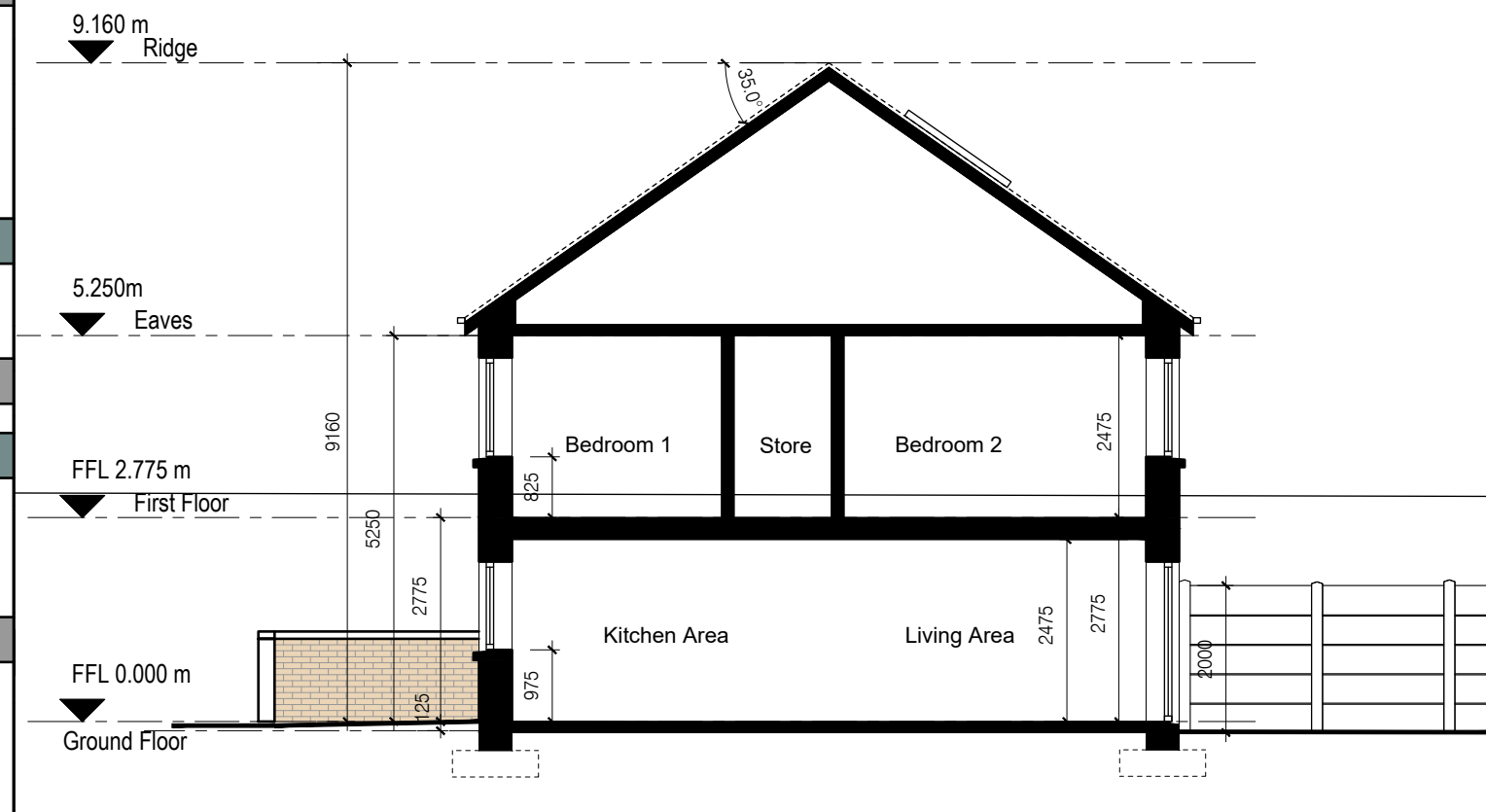


12 Rear Elevation B  
Scale: 1:100



13 Side Elevation C  
Scale: 1:100

Unit Type 3A Schedule of Accom.	
3bed 2 storey dwelling (3B5P)	
Area compliance with CDP & QHSC 2007	
Target Minimum floor areas	
Aggregate GIA	92.0m²
Aggregate Living	34.0m²
Aggregate Bedroom	32.0m²
Aggregate Storage	5.0m²
Area Breakdown	
GIA - 3B/5P GF	50.8m²
GIA - 3B/5P FF	50.8m²
Aggregate GIA	101.6m²
Room Name	
Living Room	13.1m²
Kitchen	21.1m²
Aggregate Living	34.2m²
Bedroom 1	11.7m²
Bedroom 2	13.1m²
Bedroom 3	7.2m²
Aggregate Bedroom	32.0m²
Storage	5.2m²
Aggregate Storage	5.2m²
Bathroom	4.6m²
WC	2.4m²
Plant	1.5m²



14 Section A-A  
Scale: 1:100

NOTES ON FINISHES	
1. ROOF:	DARK COLOURED FIBRE CEMENT OR CLAY OR CONCRETE ROOF TILES IN SELECTED COLOUR.
2. WALLS:	SELECTED CLAY BRICKWORK WHERE INDICATED OTHERWISE LIGHT RENDER FINISH TO SELECTED COLOUR.
3. WINDOWS & DOORS:	POWDER-COATED ALUMINIUM WINDOWS & DOORS TO SELECT COLOUR. OBSCURE GLAZING WHERE INDICATED TO SENSITIVE WINDOWS.
4. CILLS:	CILLS TO SELECTED COLOUR AND FINISH
5. RAINWATER GOODS:	POWDER-COATED ALUMINIUM GUTTERS, FACIAS, SOFFITS AND DOWNPIPES TO SELECTED COLOUR.
6. CURTLAGE WALLS:	RENDER & CLAY BRICK FINISH WITH CAPPING AS INDICATED. POWDER-COATED METAL RAILINGS TO SELECTED COLOUR. REFER TO BOUNDARY TREATMENT DWG: SHB3-BLN-AR-COA-DR-0104
7. ENTRANCE CANOPY:	POWDER COATED ALUMINIUM TO SELECTED COLOR
8. SIDE GATE:	TIMBER TO SELECTED COLOR
9. BACK GARDENS:	PC CONCRETE POST AND PC CONCRETE PANELS
10. EXTERNAL STAIRS AND STEPS:	BRUSHED CONCRETE FINISH
11. BALCONIES AND BALUSTRADE:	POWDER COATED METAL TO SELECTED COLOUR
Refer to Site Plan for:	
- Finished floor levels to survey datum	
- Orientation	
- Handling of type for each unit	
- Private open space for each unit	