



**COMHAIRLE CHONTAE SHLIGIGH**  
**SLIGO COUNTY COUNCIL**



# **COOLANEY VILLAGE TO ROCKFIELD FOOTPATH SCHEME**

## **PUBLIC CONSULTATION**

April 2024

**Sligo.**



# Contents

Overview.....2

What is Active Travel? .....3

Project Information.....3

**Coolaney to Rockfield.....3**

Project Benefits.....5

Scheme Drawings.....6

Submission of Comments.....6

What has been done so far? .....6

What happens next? .....7

## Overview

Sligo County Council, in conjunction with the NTA, aims to improve the current facilities for both pedestrians and cyclists under Active Travel Interventions Sligo. The proposed project is to implement a new footpath from Coolaney to Rockfield National School.

## What is Active Travel?

Active Travel involves travelling with a purpose, using your own energy via sustainable means. It includes walking, wheeling, and cycling or the use of self-powered, non-motorised scooters as part of a purposeful journey. For example, walking to school and cycling to work are both considered forms of Active Travel.

## Why are we implementing this?

Government investment in Active Travel has increased significantly in recent years. This reflects the commitments made in the National Sustainable Mobility Policy, the Climate Action Plan, and other Government policies to encourage modal shift, where possible, away from private car use and towards more sustainable transport modes.

Active travel is cemented in these policies which seeks to deliver at least 500,000 additional daily active travel and public transport journeys by 2030. Active travel is an intrinsic part of a sustainable transport system, one that priorities low carbon transport choices and comprises multiple modes, including walking, cycling, public transport, and bike, wheeling, and car sharing.

### Scheme objectives:

- Provide a vision for the achievement of a reduction in car dependency and shift to sustainable modes of transport.
- Create a pedestrian link is accessible.
- Ensure integrated development of all transport modes.
- Improve road safety and public health.
- Reduce air and noise pollution, greenhouse gas emissions and energy consumption.
- Ensure economic viability, social equity, and environmental quality.

## Project Information

### Coolaney to Rockfield

Coolaney is located approximately 23 km to the south-west of Sligo City, in a designated Rural Area under Urban Influence, on lands classified as normal rural landscape. Rockfield is a small settlement located approximately 1 km west of Coolaney.

Community facilities in Coolaney-Rockfield consist of a primary school, crèche, community centre, sports field and playground, church, burial ground and health centre.

The proposed scheme is located on Local Road L-6804-0, starting at the entrance to Fort Haven Residential Estate to Rockfield National School. The route is along a mixture of agricultural land and residential developments.

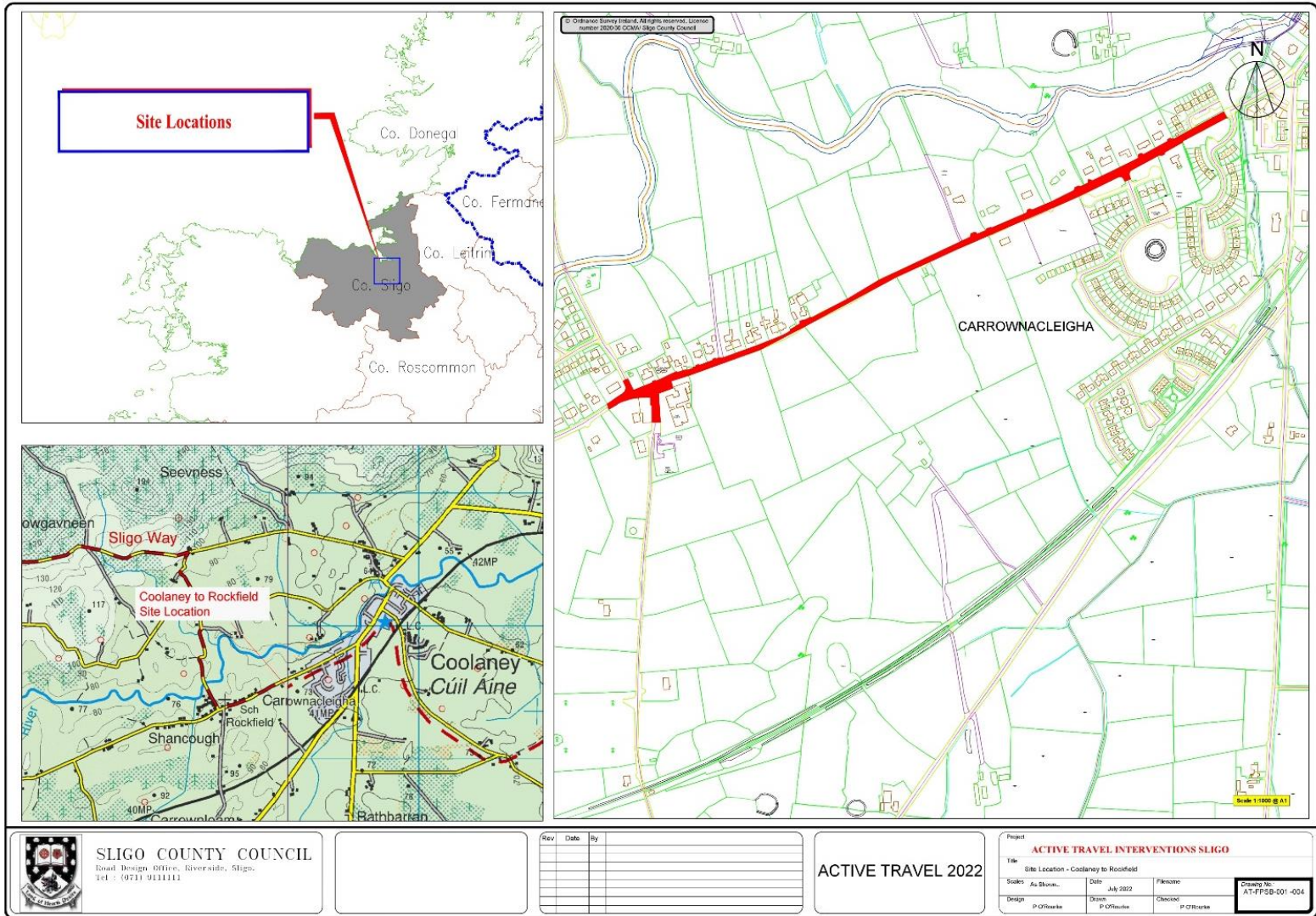
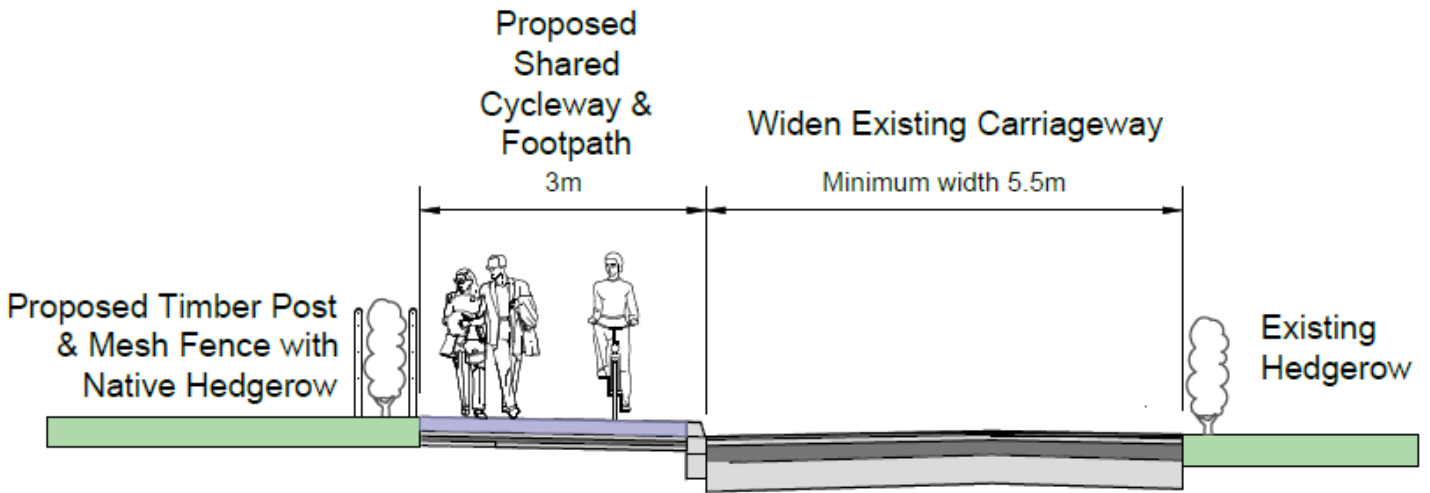


Figure 1 – Site location – Coolaney

### Proposed Scheme

The objective of the scheme is to create a pedestrian link connecting Coolaney village to Rockfield. The works involved are as follows:

- Remove the existing road boundary along the 850-metre stretch of the local road.
- Remove the existing utility poles and overhead wires.
- Provide and construct underground utility network.
- Extend the existing drainage network.
- Provide and construct a 3-metre-wide shared concrete cycleway and footpath – subject to detailed design.



**PROPOSED CROSS SECTION D-E**

Figure 2 – Section showing Shared Cycleway & Footpath.

- Provide and construct a new roadside boundary in the form of fencing and new hedgerows.
- Provide new public lighting along the new footpath.
- Provision of pedestrian crossing facilities along the route.

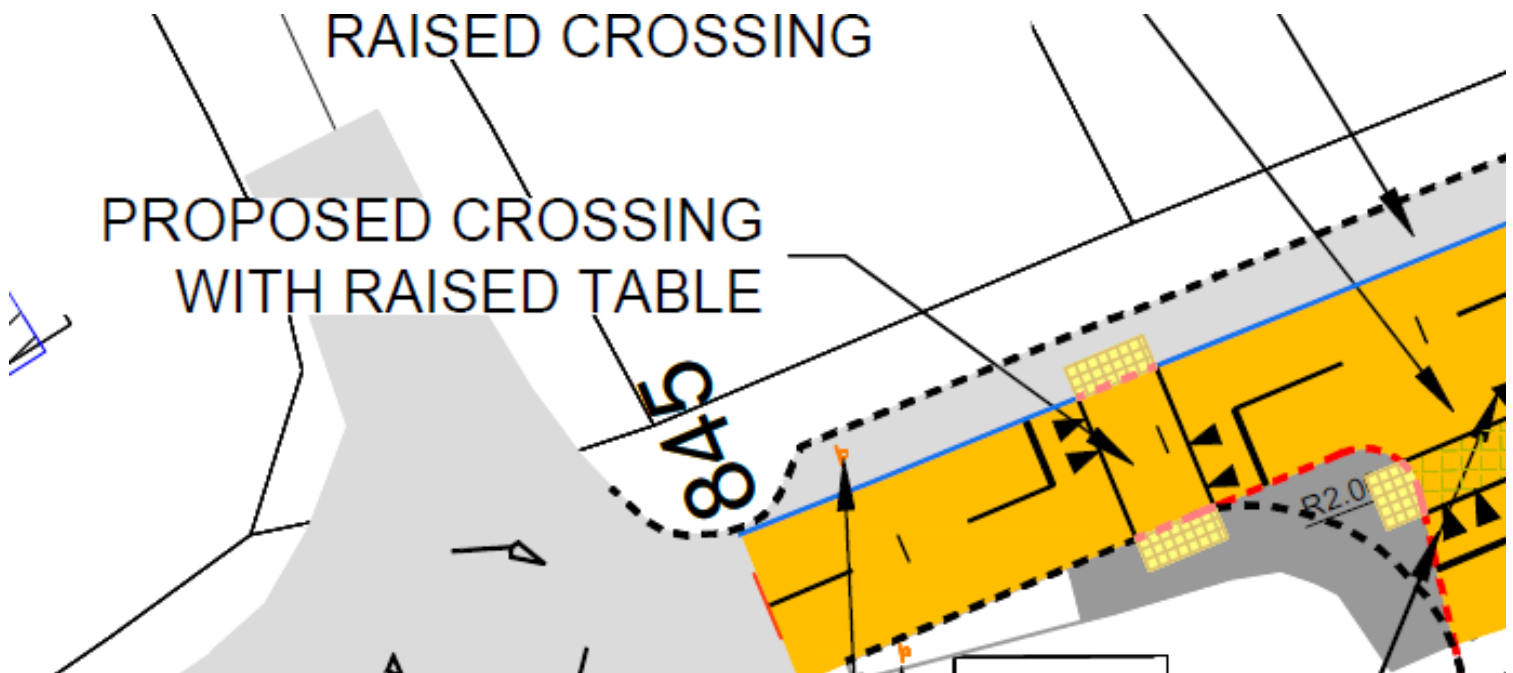


Figure 3 – Plan view showing pedestrian crossing – Rockfield.

**Project Benefits**

The project will allow a safe route for users from Coolaney to Rockfield. This will promote greater active travel in the area and eliminate the existing risk to vulnerable users and road traffic along the L6804-0 between Coolaney and Rockfield.

The new footpath will allow residents along the route to walk into the Village in a safe environment and to utilise Local Link bus services in both Coolaney and Rockfield, namely Route 981 Coolaney / Rockfield to Sligo.

Improved drainage works will remove existing water ponding issues along the route.

The public lighting scheme will provide adequate lighting levels and ensure safety for walkers at night.

Considering all elements proposed in a global sense, the project will provide a significantly safer environment for all road users.

## Scheme Drawings

The attached drawings outline the design and layout for the scheme. The scheme is at preliminary design and as such these drawings are subject to change and/or modifications.

## Submission of Comments

Please submit any comments that you may have on the proposed scheme by **5pm on Friday 03<sup>rd</sup> May 2024**.

## What has been done so far?

We are currently at Gateway 3 in the NTA project life cycle. See NTA project cycle below:



**At this stage we have completed below:**

- Appointment of Consultant
- Passed NTA Gateway 1 & 2 of Approval
- Initial engagement with landowners
- Options assessment report
- Archaeological assessment
- Environmental assessment
- Project appraisal report

**What happens next?**

This is the initial consultation stage of the project. We will review all the comments and observations and consider where appropriate, changes to the design.

- SCC are seeking Gateway approval to proceed to Phase 4 Statutory process
- In person consultation – date Tuesday 30<sup>th</sup> April 2024 from 4pm – 7pm in Coolaney Community Centre.
- Part 8
- Further engagement with stakeholders
- Further engagement with landowners