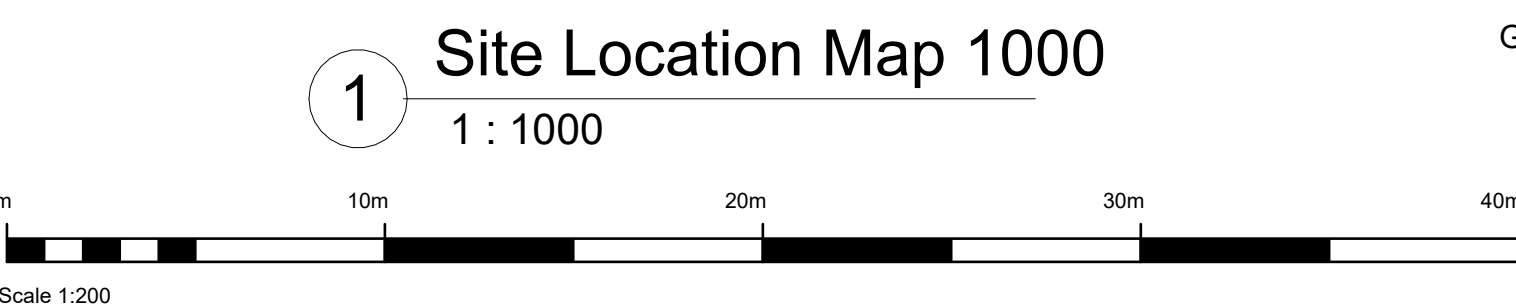
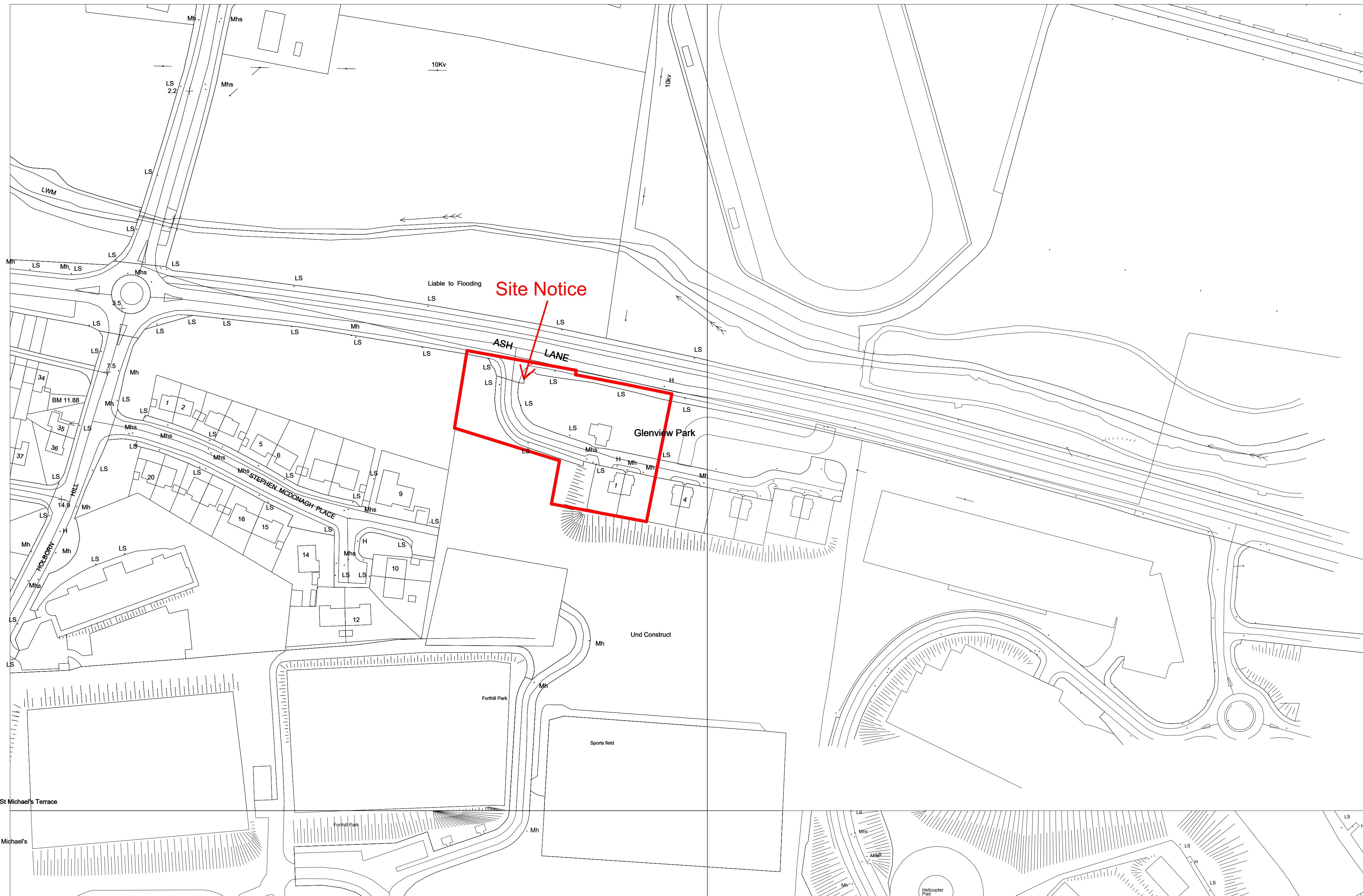


DO NOT SCALE FROM THIS DRAWING.
 ALL FIGURED DIMENSIONS ARE TO BE CHECKED ON SITE. ANY ERRORS OR OMISSIONS ARE TO BE IMMEDIATELY REPORTED TO SLIGO COUNTY COUNCIL LEAD ARCHITECT OR REPRESENTATIVE.
 ALL CONSTRUCTION PRACTICES ARE TO CONFORM WITH CURRENT BUILDING REGULATIONS.



1 Site Location Map 1000
 1 : 1000

GLENVIEW PARK SITE OUTLINED IN RED / AREA .441 Ha / 4415 Mqs

OS MAPS SHOWN ARE 1012-02 AND 1012-03 , ITM CO.ORDS CENTRE OF SITE 569511, 836577 .
 © Talite Eireann. All rights reserved. Licence number CCMA Talite Eireann/SCC 2020-2030

Purpose of Issue : **Planning**

Status Key

S0	WORK IN PROGRESS	T1	TENDER STAGE 1 (MULTIPLE TENDERS)
S1	COORDINATION	T2	TENDER STAGE 2 (MULTIPLE TENDERS)
S2	INFORMATION	T3	TENDER STAGE 3 (MULTIPLE TENDERS)
S3	REVIEW COMMENT	CP	COMPLIANCE STATUTORY
S4	CONSTRUCTION APPROVAL	AS	AS CONSTRUCTED RECORD DOCUMENT
S5	REVIEW AND ACCEPTANCE	DA	DISABILITY ACCESS CERT
		FC	FIRE CERT
A0	STAGE 0 DELIVERABLES (URBAN DESIGN AND STRATEGIC)		
A1	STAGE 1 DELIVERABLE (CAPACITY/FEASIBILITY)		
A2	STAGE 2 DELIVERABLE (SCHEME DESIGN)		
A3	STAGE 3 DELIVERABLE (PLANNING PERMISSION)		
A4	STAGE 4 DELIVERABLE (TECHNICAL DESIGN/TENDER)		
A5	STAGE 5 DELIVERABLE (CONSTRUCTION)		
A6	STAGE 6 DELIVERABLE (HANDOVER)		
A7	STAGE 7 DELIVERABLE (IN USE / POE, ETC.)		

Rev.No.	Comment	Date
CD1	Planning Complete for Issue	27/10/23

Revisions Key

P01	P CODES ARE PRELIMINARY/PROGRESS REVISIONS ETC. P01, P02, P03 ETC.
C01	C CODES ARE CONTRACTUAL OR COMPLETE REVISIONS C01, C02, C03 ETC.
	REVISION NUMBERING RESTARTS PER WORK STAGE



SLIGO COUNTY COUNCIL
 HOUSING CAPITAL TEAM



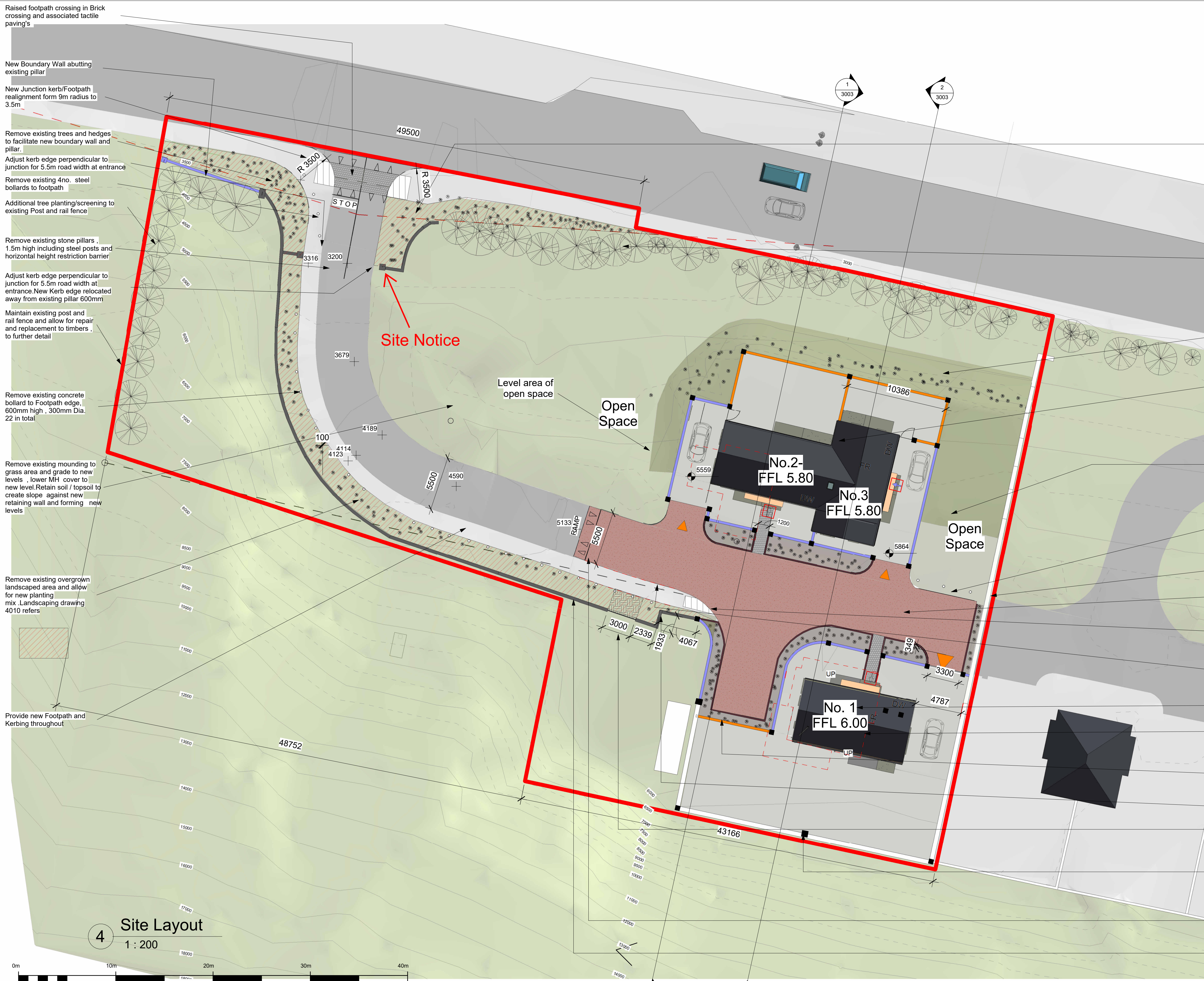
Sligo County Council, County Hall, Riverside, Sligo. F91Y763		PROJECT NO. 1.18.18	FIRST ISSUE DATE: 19/10/2022
DRAWING TITLE: Glenview Park, Group Housing		DRAWING NO. 3001	STATUS: A3
DRAWN BY: JS		SCALE: C01	
CHECKED BY: MOC	Project Number 1.18.18- SCC- 00- ZZ- DR- A- 3001	Originator- Vol & Syst.	Lvs & Loc- Type
		Roles	No.



DO NOT SCALE FROM THIS DRAWING.
 ALL FIGURED DIMENSIONS ARE TO BE CHECKED ON SITE. ANY ERRORS OR OMISSIONS ARE TO BE IMMEDIATELY REPORTED TO SLIGO COUNTY COUNCIL LEAD ARCHITECT OR REPRESENTATIVE.
 ALL CONSTRUCTION PRACTICES ARE TO CONFORM WITH CURRENT BUILDING REGULATIONS.

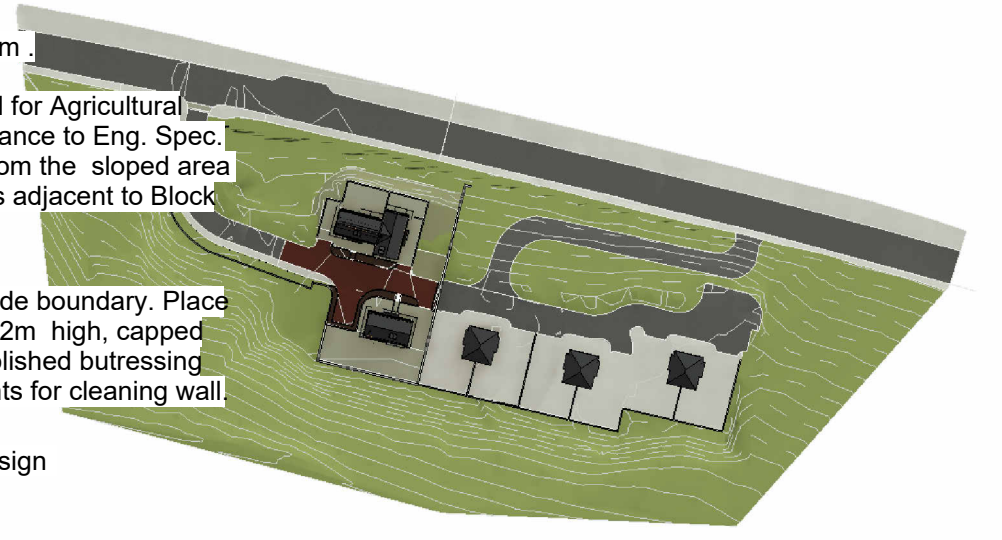


Relocate existing boulders at boundary to new landscaped areas. Locations to be agreed on site.



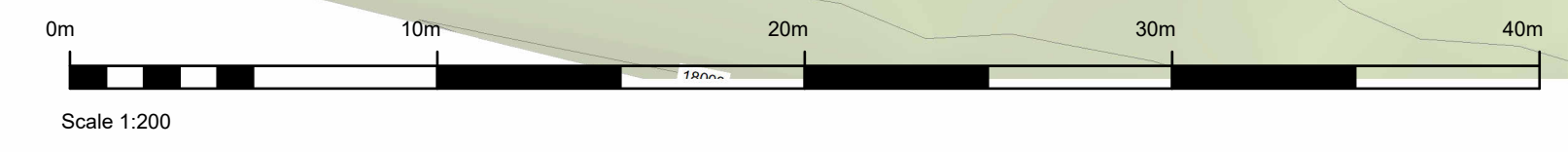
Legend

- North Point
- Site outlined in red
- Site Area 4415 Msq / .441 Ha
- Existing Spot Levels
- Proposed Spot Levels / Refer to Eng. Drawings for detailed levels
- 1.8m high Block boundary wall, Capped and plastered
- 1.0m high Block boundary wall, Capped and plastered
- Kilseran Kerb Sett 190 x 160mm - Charcoal, Laid high rise
- Existing Wall
- 1200mm x 1200mm level access to front door
- Vehicular entrance 3900mm Wide
- Roadway finish to Eng Spec. and design
- Concrete footpaths/ Surrounds to houses to Eng. Spec and design
- Homezone surface finish : Coloured Asphalt to Eng.Spec and design
- Paved area/crossing :Brick Paving to Eng.Spec and design
- Landscaped areas: Low level planting to futher detail



KEY PLAN

4 Site Layout
1 : 200



Status Key	Revisions Key
S0 WORK IN PROGRESS	T1 TENDER STAGE 1 (MULTIPLE TENDERS)
S1 COORDINATION	T2 TENDER STAGE 2 (MULTIPLE TENDERS)
S2 INFORMATION	T3 TENDER STAGE 3 (MULTIPLE TENDERS)
S3 REVIEW COMMENT	CP COMPLIANCE STATUTORY
S4 CONSTRUCTION APPROVAL	AS CONSTRUCTED RECORD DOCUMENT
S5 REVIEW AND ACCEPTANCE	DA DISABILITY ACCESS CERT
AD STAGE 0 DELIVERABLES (URBAN DESIGN AND STRATEGIC)	FC FIRE CERT
A1 STAGE 1 DELIVERABLE (CAPACITY/FEASIBILITY)	
A2 STAGE 2 DELIVERABLE (SCHEME DESIGN)	
A3 STAGE 3 DELIVERABLE (PLANNING PERMISSION)	P01 P CODES ARE PRELIMINARY/PROGRESS REVISIONS ETC. P01, P02, P03 ETC.
A4 STAGE 4 DELIVERABLE (TECHNICAL DESIGN/TENDER)	C01 C CODES ARE CONTRACTUAL OR COMPLETE REVISIONS C01, C02, C03 ETC.
A5 STAGE 5 DELIVERABLE (CONSTRUCTION)	
A6 STAGE 6 DELIVERABLE (HANDOVER)	
A7 STAGE 7 DELIVERABLE (USE / POE, ETC.)	REVISION NUMBERING RESTARTS PER WORK STAGE

Rev.No.	Comment	Date
CD1	Planning Complete for Issue	27/10/23



SLIGO COUNTY COUNCIL
HOUSING CAPITAL TEAM

Purpose of Issue : **Planning**

Sligo County Council, County Hall, Riverside, Sligo. F91Y763	
PROJECT TITLE: Glenview Park, Group Housing	PROJECT NO: 1.18.18 FIRST ISSUE DATE: 19/10/2022
DRAWING TITLE: Site Layout	STATUS: A3 REVISION: C01
DRAWN BY: JS	ORIGINATOR: JS
CHECKED BY: MOC	PROJECT NUMBER: 1.18.18- SCC- 00- ZZ- DR- A- 3002